



VERA LOW
CENTER
FOR
STUDENT ENRICHMENT

FACT BOOK

2019-2020

BethelU.edu

BethelUniversity

325 Cherry Ave., McKenzie, TN

Table of Contents

BETHEL UNIVERSITY

History	3
Bethel University Today	4
Financial Cost.....	6

ADMISSIONS & ENROLLMENT

First-Time Full-Time Freshmen.....	8
Entering Freshmen ACT Scores	9
Direct Costs for Incoming Freshmen	10
All Student Fall Enrollment: 5 Years	11-12
Fall 2019 Enrollment.....	13-14
Students in Distance Education Programs.....	15
Distance Education by Student Location	16
State of Origin	17
International Students	17
Retention Rates	18

ACADEMICS

Library, Learning Support, and Tutoring Services.....	20-22
Credit Hours Taken: Fall Semester 2019	23
Non-Degree Programs.....	24
Degree Programs and Majors.....	25-26
Licensure & Certification Rates	27-30

STUDENT LIFE

Residence Halls	32-33
Student Activities.....	34
Student Organizations.....	35
Christian Life	36

FACULTY & STAFF

University Organizational Chart.....	38
Administration.....	39-46
Faculty.....	47-62

ATHLETICS

Athletic Activities	64
Athletics Organizational Chart.....	65
Athletics Administration.....	66-67
Intercollegiate Awards & Recognitions 2019-20	68

FINANCIAL AID

Financial Aid Overview	70
Average Student Loan Debt.....	71

REVENUES & EXPENDITURES

2019-20 Sources of Revenue & Expenditures	74
Salary Outlays.....	75
Staff by Occupational Category.....	76

CRIME STATISTICS

By Each Campus	77-84
----------------------	-------

GRADUATION

Graduates by College.....	86
Graduation Rates	87

History

Since its founding in McMoresville, Tennessee, in 1842, Bethel University has grown and changed in ways its founders could have never imagined.

Chartered by the State of Tennessee in 1847, Bethel began as a seminary for the Cumberland Presbyterian Church with the purpose of training young male pastors for the growing denomination. It was not until the college moved to McKenzie in 1872 that it first began to admit women as students.

The oldest existing building on Bethel's campus is Campbell Hall, built in 1923. It was given to the college, along with 11 acres of land, by the city of McKenzie. At that time, it offered every facility the college needed in a single building, including classrooms, offices, laboratories, a prayer room, and an auditorium. It was named for Richard and Alice Campbell in 1983, and it now contains offices and the Lavinia Cole Chapel. Additionally, it boasts the Hall of Presidents, which displays a picture of every president of the college since its inception in 1842.

The Log Cabin was constructed outside Campbell Hall by the freshman class in 1925. The purpose of the building was to show the humble beginnings of the Cumberland Presbyterian Church, and to remind each student, staff and faculty member that the school was built "On the Faith of Our Fathers." When building the cabin each log cost \$35, and whoever donated the money to buy a log would have his or her name engraved on the metal plate on that log. Today, the Log Cabin is used for offices and is adjacent to the Alumni Garden.

Bethel's Theological Department, which had become Cumberland Presbyterian Theological Seminary, moved to Memphis and changed its name to Memphis Theological Seminary in 1964. In 2009, Bethel College was renamed Bethel University.

Today there are more than 60 courses of study options across three colleges that include the College of Arts and Sciences, the College of Professional Studies, and the College of Health Sciences. In addition to its main campus in McKenzie, Tennessee, Bethel University also has satellite campuses across Tennessee in Memphis, Clarksville, Jackson, and Paris, as well as administrative offices in Nashville.



Original McMoresville building, c. 1842



Campbell Hall, c. 1923



Alumni Garden (2010) at the Log Cabin, c. 1925



Vera Low Center for Student Enrichment, 2012



Wildcat Stadium, 2014



Bethel University's mission is to create opportunities for members of the learning community to develop in a Christian environment their highest intellectual, spiritual, and social potential. This includes synchronous and asynchronous modes of education.

Definitions

By the words "create opportunities," the University offers the means for persons to have choices and options opened before them and to develop the confidence and maturity to choose appropriately.

By the term "learning community," the University extends its mission to all persons who seek development of the whole person and who would choose to pursue the aspiration through Bethel University. The learning community of Bethel University includes undergraduate students in traditional and non-traditional programs, graduate students, faculty, staff, the local community, and the Cumberland Presbyterian Church.

Intellectual development focuses on the cognitive aspect of the human; cognitive development incorporates analysis, critical reflection, and synthesis of knowledge of multiple disciplines. To achieve this outcome, the university will leverage developing technology to efficiently create learning experiences for the community.

Social development focuses on the affective and behavioral aspects of the human; social development incorporates the ability to interact and communicate with other humans with civility and tolerance.

Spiritual development focuses on the metaphysical aspect of the human; spiritual development incorporates the ideas of faith, morality, and practice.

By the term, "Christian environment," the University draws upon the thought of St. Ignatius that the college environment should facilitate knowledge and contemplation such that actions based on unbiased reason and reasonable faith.

Synchronous modes of education means Bethel University offers courses to students in the face-to-face classroom setting, whereas asynchronous means Bethel University offers courses to students in the online classroom platform. By utilizing both the synchronous and asynchronous learning platforms, Bethel University seeks to provide additional educational opportunities to students in the 21st century.

Core Values

Bethel University creates a learning community which:

- Accepts individuals from a wide variety of backgrounds, experiences, and beliefs
- Offers opportunities for individuals to contribute to the University and to other communities in a variety of ways
- Emphasizes human dignity and ethics consistent with the Christian tradition
- Encourages inquiry and the examination of values, self, and society
- Prepares individuals for the life-long pursuit of knowledge in a complex and constantly changing world.

Affiliation

Bethel University is joined in a covenant relationship with the Cumberland Presbyterian Church. Bethel is proud of its heritage as a Cumberland Presbyterian university and of the service it provides to the church in the form of education for current and future leaders.

Accreditation

Regional

Bethel University is accredited by the Southern Association of Colleges and Schools Commission on Colleges to award associate, baccalaureate, and masters degrees. Contact the Commission on Colleges at 1866 Southern Lane, Decatur, Georgia 30033-4097 or call 404-679-4500 for questions about the accreditation of Bethel University.

Program Specific Accreditations

Athletic Training

The Athletic Training Program was officially accredited by the Commission on Accreditation of Athletic Training Education (CAATE) in the Fall of 2015.

Education

Bethel University is approved by the TN Board of Education as a teacher preparation institution for the State of TN.

Nursing

Bethel's Bachelor of Science in Nursing degree is approved by the Tennessee Board of Nursing. Ten-year continuing accreditation was granted to the Nursing Program April 2015 by the Commission on Collegiate Nursing Education (CCNE).

Physician Assistant Program

The Accreditation Review Commission on Education for the Physician Assistant (ARC-PA) has granted-Continued to Bethel's Physician Assistant Program. Accreditation-Continued is an accreditation status granted when a currently accredited program is in compliance with the ARC-PA Standards.



Financial Cost

Tuition Fiscal Year 2019-2020

Tuition and fees for a full-time traditional undergraduate student are \$16,552. Room and board costs for a double room and meal plan are \$9,198.

Financial Aid

Approximately 100% of all entering Full-Time First-Time Freshman received some type of financial assistance in 2018-2019 Financial Aid Year. (Actual amounts for 2018-2019 were used rather than estimated amounts for 2019-2020.)

Total grant aid received by all undergraduate students\$27,211,852
 Number of undergraduate students who received a Pell Grant1,880
 Percentage of First Time - Full Time (FTFT) students receiving any financial aid100%

FTFT Students Receiving Grant Aid by Type

	Percent of FTFT students receiving grant	Average amount of grant aid received
Total	98%	\$15,302
Federal Government	62%	\$5,300
Pell	62%	\$5,048
Other Federal	34%	\$459
State/Local Government	60%	\$5,056
Institutional	87%	\$10,047

FTFT Students Receiving Loans by Type

	Percentage of FTFT students receiving loans	Average amount of loans received
Total	76%	\$5,548
Federal	76%	\$5,341
Non-federal	2%	\$7,185

Average net price for FTFT students who receive grant aid \$15,649

Resource: National Center for Education Statistics (NCES), IPEDS –Student Financial Aid Data

BU



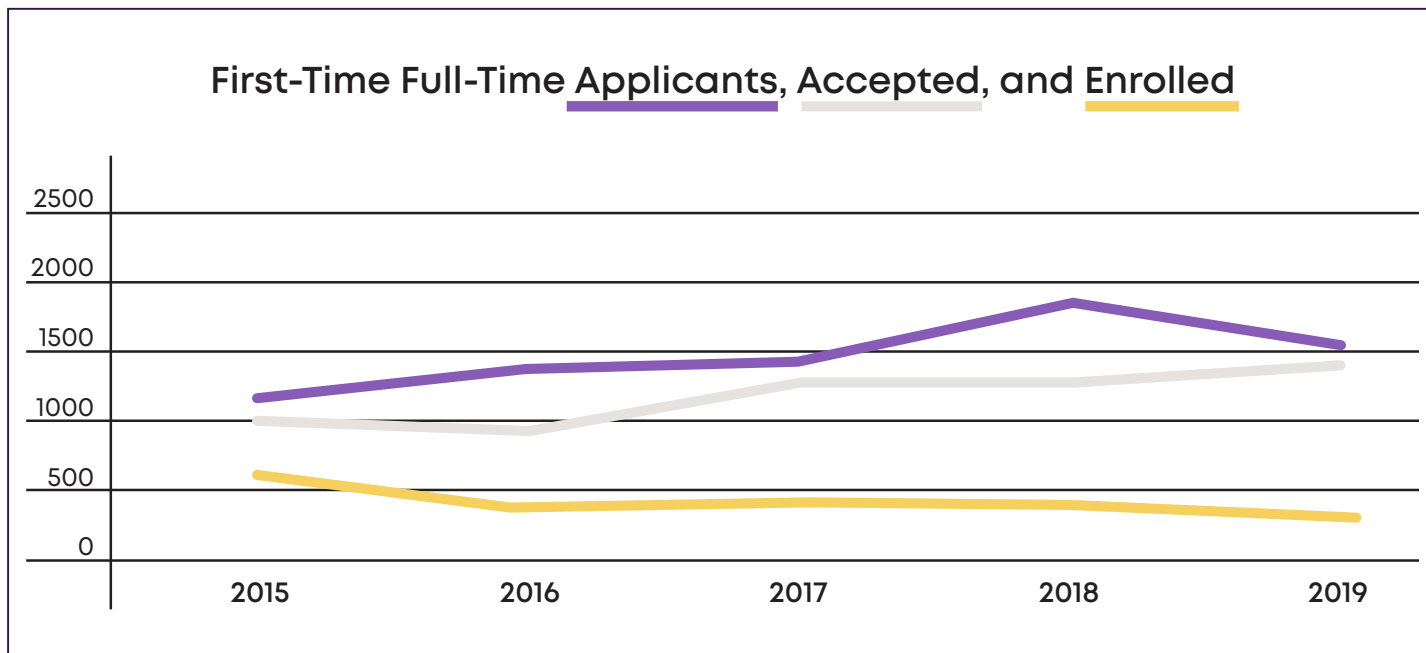
Admissions & Enrollment

First-Time Full-Time Freshmen

First-Time, Full-Time Freshman Data Fall Terms 2015-2019

Year of Fall Term	Applicants	Accepted	% of Applied Who Were Accepted	Enrolled	% of Accepted that Enrolled
2015	1149	965	84%	627	65%
2016	1353	900	67%	407	45%
2017	1388	1,299	94%	456	35%
2018	1898	1,262	66%	412	33%
2019	1541	1392	90%	418	30%

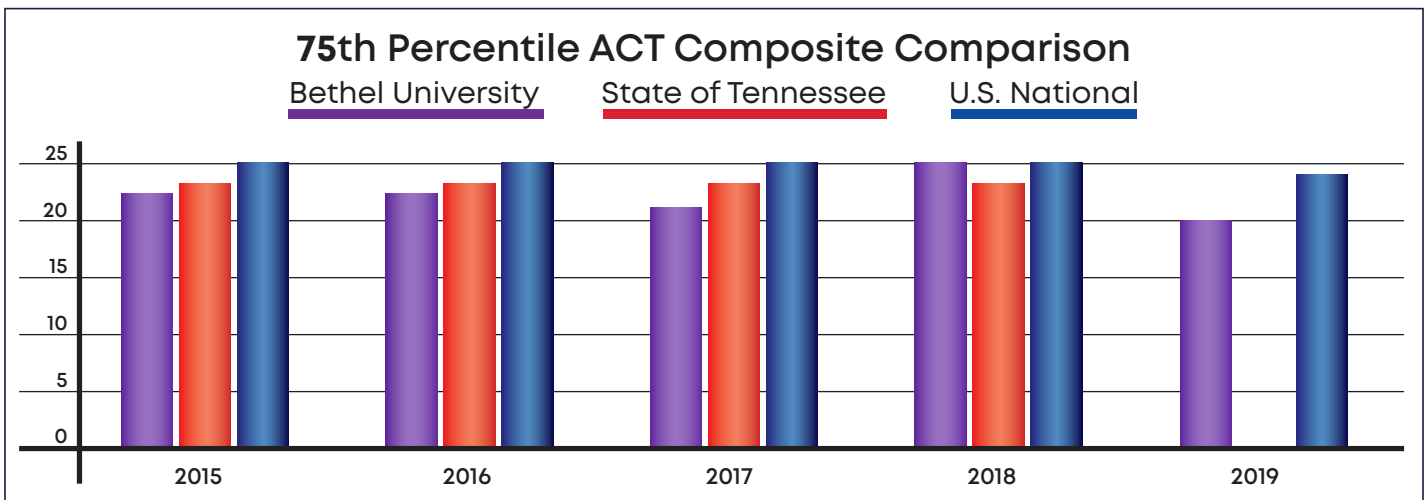
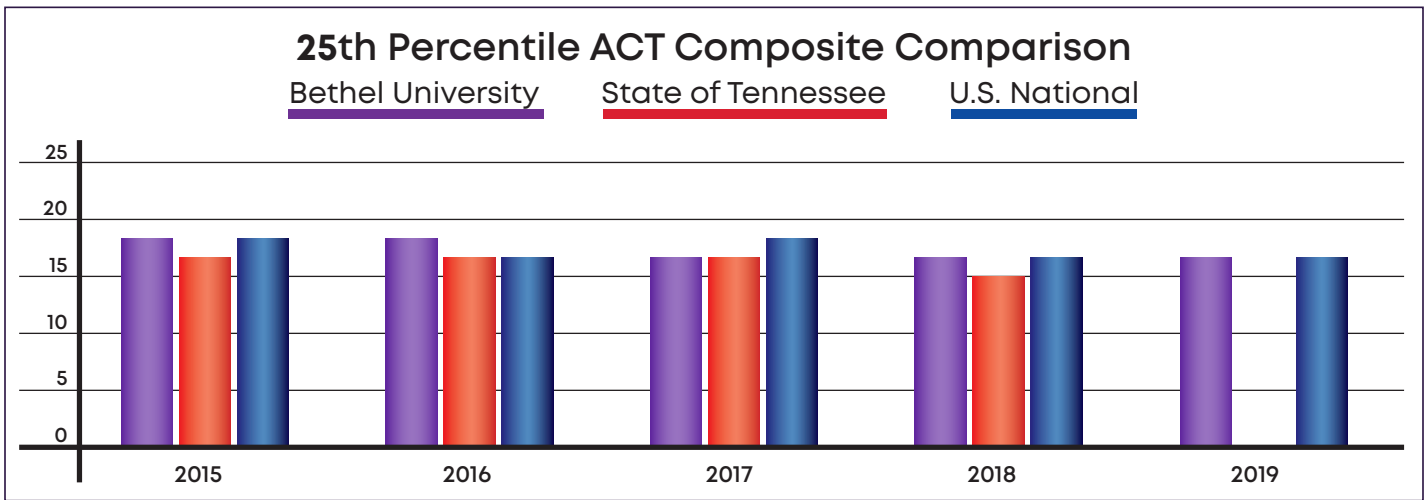
First-Time Full-Time Applicants, Accepted, and Enrolled



Source: Office of Institutional Research and Effectiveness

Entering Freshmen ACT Scores

American College Testing Program (ACT) Scores for First-Time Full-Time Freshmen						
Year	Bethel University		State of Tennessee		U.S. National	
	25th Percentile ACT Composite	75th Percentile ACT Composite	25th Percentile ACT Composite	75th Percentile ACT Composite	25th Percentile ACT Composite	75th Percentile ACT Composite
2015	17	22	16	23	17	25
2016	17	22	16	23	16	25
2017	16	21	16	23	17	25
2018	16	25	15	23	16	25
2019	16	20	N/A	N/A	16	24

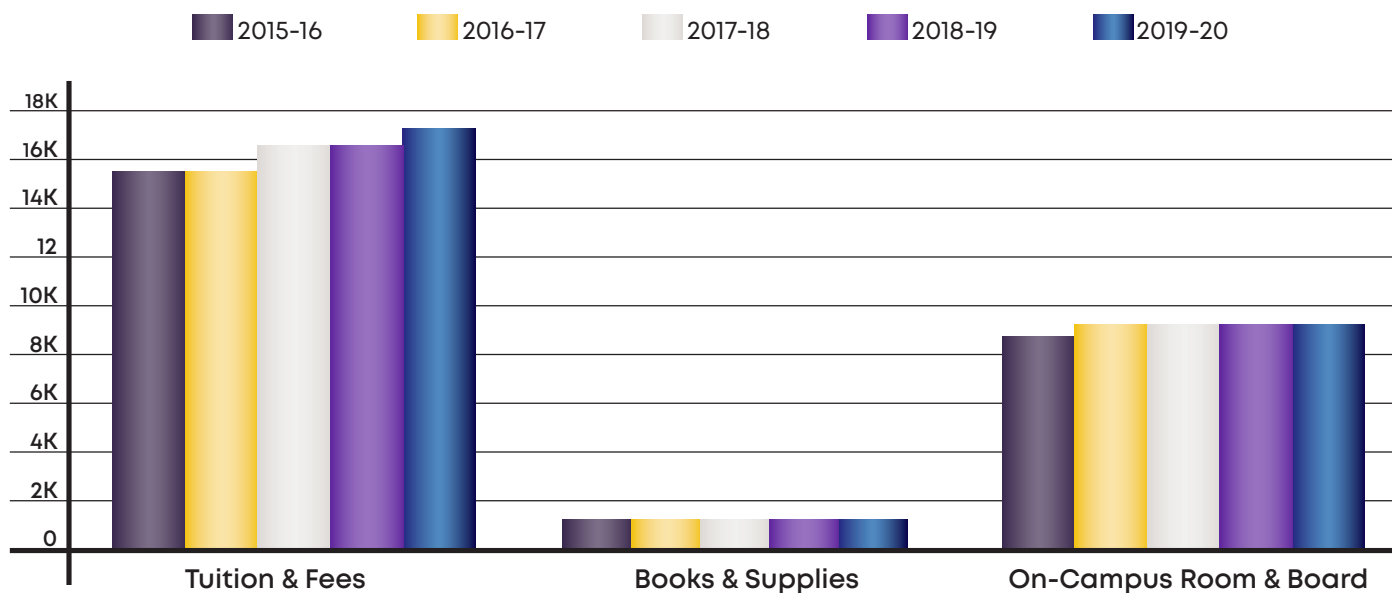


Source: ACT.org and the Office of Institutional Research and Effectiveness

Direct Costs for Incoming Freshmen

Tuition, Fees, and On-Campus Room & Board (Direct Cost) Comparison Information						
Academic Year	Tuition & Fees	% Increase in Tuition from Prior Year	Books & Supplies	% Increase in Books & Supplies from Prior Year	On-Campus Room & Board	% Increase in Room & Board from Prior Year
2015-2016	\$15,714	0%	\$1,200	0%	\$8,782	0%
2016-2017	\$15,764	.3%	\$1,200	0%	\$9,198	4.7%
2017-2018	\$16,552	5%	\$1,200	0%	\$9,198	0%
2018-2019	\$16,552	0%	\$1,200	0%	\$9,198	0%
2019-2020	\$17,010	3%	\$1,200	0%	\$9,198	0%

Direct Costs Comparison: 2015 through 2019



Source: Office of Institutional Research and Effectiveness

All Student Fall Enrollment: 5 Years

Academic Year	2015-16	2016-17	2017-18	2018-19	2019-20
Total Full-Time enrollment	6318	5975	5779	5407	3119
Undergraduate enrollment	5021	4829	4829	4560	2358
Undergraduate transfer-in enrollment	391	632	510	355	394
Graduate enrollment	1297	1146	950	847	761
Student-to-faculty ratio	17 to 1	17 to 1	20 to 1	17 to 1	15 to 1

Percent of female undergraduate students	58%	58%	56%	56%	49%
Percent of male undergraduate students	42%	42%	44%	44%	51%
Percent of undergraduates who are full-time	71%	72%	72%	65%	69%

Undergraduate Retention and Graduation Rate Cohort

First-time, full-time bachelor's seeking student retention rate	60%	59%	60%	57%	62%
Graduation rate cohort as percent of total entering students	32%	24%	27%	24%	25%

Graduate enrollment	1407	1146	950	847	761
Percent of female graduate students	64%	65%	63%	64%	65%
Percent of all male graduate students	36%	35%	37%	36%	35%
Percent of graduate students who are full-time	86%	86%	73%	68%	78%

All Student Demographics

Percent of all students who are female	59%	59%	57%	57%	47%
Percent of all students who are male	41%	41%	43%	43%	53%

All Student Fall Enrollment (continued)

Academic Year	2015-16	2016-17	2017-18	2018-19	2019-20
---------------	---------	---------	---------	---------	---------

Percent of Graduate Students by Race/Ethnicity:

Nonresident alien	0%	0%	1%	1%	0.26%
Hispanic/Latino	1%	1%	1%	2%	2.00%
American Indian or Alaska Native	0%	0%	0%	0%	0.40%
Asian	1%	1%	2%	1%	1.00%
Black or African American	40%	43%	45%	46%	40.00%
Native Hawaiian or Pacific Islander	0%	0%	0%	1%	0%
White	49%	45%	45%	44%	52.00%
Two or more races	7%	1%	2%	2%	3.00%
Race and ethnicity unknown	1%	8%	4%	4%	1.30%

Percent of All Students by Race/Ethnicity:

American Indian or Alaska Native	1%	1%	1%	1%	0.35%
Asian	1%	1%	1%	1%	0.55%
Black or African American	36%	37%	37%	35%	33.50%
Hispanic/Latino	2%	2%	2%	2%	2.18%
Native Hawaiian or Pacific Islander	0%	0%	0%	0%	0.10%
White	54%	53%	53%	52%	51.78%
Two or More Races	1%	1%	2%	4%	7.18%
Race and ethnicity unknown	5%	4%	3%	2%	1.44%
Nonresident alien	1%	1%	1%	2%	2.92%

Percent of Undergraduates by Race/Ethnicity:

American Indian or Alaska Native	1%	1%	1%	1%	0.34%
Asian	1%	1%	1%	1%	0.38%
Black or African American	35%	36%	36%	33%	31.47%
Hispanic/Latino	2%	2%	2%	3%	2.25%
Native Hawaiian or Pacific Islander	0%	0%	0%	0%	0.08%
White	55%	55%	54%	54%	51.61%
Two or more races	1%	1%	2%	4%	8.61%
Race and ethnicity unknown	5%	3%	2%	2%	1.48%
Nonresident alien	1%	1%	1%	2%	3.77%

Source: Office of Institutional Research and Effectiveness

Fall 2019 Enrollment

College of Arts and Sciences



High School Dual Enrollment Non-Degree

Source: Office of Institutional Research and Effectiveness

Undeclared1128

Associate Degree Majors

Associate-General Studies68

Bachelor's Degree Majors

Art 10
 Biology.....1
 Biology (Biology Education)8
 Biology (Field/Environmental)25
 Biology (General Biology).....33
 Biology (Pre-Professional Health)..... 60
 Business Administration (Accounting)..... 47
 Business Administration31
 (Computer Information Systems)
 Business Administration (Management) ..188
 Chemistry.....3
 Child Learning & Development.....43
 Christian Studies8
 Christian Studies (Pre-Ministries Prep)3
 Christian Studies (Support Ministries).....2
 Criminal Justice Studies 80
 English.....12
 Exceptional Learning & Development..... 11
 Fitness and Wellness Promotion.....72
 History.....21
 Human Performance (Ex Science/Applied)...4
 Human Performance (Ex Science/Clinical) ..11
 Human Performance (Fitness & Wellness)... 10
 Human Performance (Physical Ed)..... 10

Human Services.....22
 Interdisciplinary Elementary Ed8
 Mathematics..... 18
 Music.....4
 Music (Music & Worship)1
 Music (Performance)2
 Music Business4
 Music Education.....13
 Music Industry Studies (Music Business)6
 Music Industry Studies (Production & Tech)..9
 Music Industry Studies 20
 (Production/Recording Arts)
 Physical Education.....47
 Pre-Nursing107
 Pre-Pharmacy.....1
 Pre-Professional Health Studies.....2
 Psychology.....69
 Psychology (Applied).....2
 Religion1
 Student Initiated Major (S.I.M).2
 Sociology12
 Theatre..... 19
Total1062

Master's Degree Majors

Edu. (Non-Degree Licensure)23
 Grad (Non-Degree15
 M.A.Ed. (Instructional Leadership) 16

M.A.Ed. (Teaching Excellence).....36
Total.....90

2018-2019 Enrollment

College of Professional Studies



This college begins new cohorts monthly on a rolling basis instead of a regular semester calendar. These are number of students for the academic year.

Associate Degree Majors

Business	318
Criminal Justice	221
Customer Relationship Management.....	46
Liberal Arts.....	152
Total.....	737

Bachelor's Degree Majors

Criminal Justice	547
Emergency Services Management.....	220
Management and Organizational Development.....	252
Organizational Leadership	768
Total.....	1787

Master's Degree Majors

MBA (Academic Practitioner).....	157
MBA (Executive).....	57
MBA (Healthcare Administration).....	93
MBA (HR Management).....	147
Criminal Justice	177
Total.....	631

Fall 2018 Enrollment

College of Health Sciences



Bachelor's Degree Majors

Athletic Training	5
Nursing – On Campus.....	101
Nursing – RN2BSN.....	5
Total.....	111

Master's Degree Majors

Physician Assistant Studies	98
-----------------------------------	----

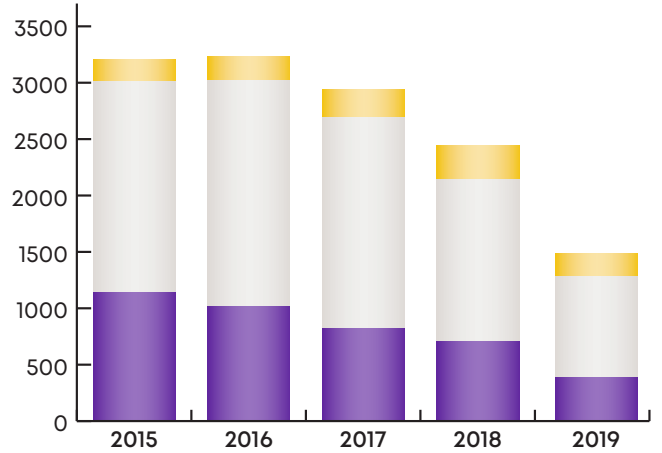
Students in Distance Education Programs

Note: this does not include on-campus students who finished the spring semester online because of the Covid 19 quarantine.

Distance Education Totals by Degree

This excludes the Management & Organizational Development (on-campus) students enrolled in online concentration courses

Degree	Fall '15	Fall '16	Fall '17	Fall '18	Fall '19
● Associate	179	200	243	296	210
● Bachelor's	1880	2002	1869	1438	881
● Master's	1140	1024	823	701	394
Total	3199	3226	3287	2435	1485



Distance Education Totals by Degree Program (Fall Semester enrollment numbers. This does not represent full totals for the College of Professional Studies, which has rolling monthly enrollment.)

ASSOCIATE DEGREE PROGRAM	2015	2016	2017	2018	2019
Business	26	65	134	172	46
Computer Information Systems	3	-	-	-	-
Criminal Justice	95	108	89	86	98
Customer Relationship Management	9	16	19	23	23
General Studies	10	2	0	14	-
Information Technology	7	2	-	-	-
Emergency Services Management	5	1	-	-	-
Liberal Arts	-	-	-	-	43
BACHELOR'S DEGREE PROGRAM	2015	2016	2017	2018	2019
Criminal Justice	735	763	744	581	345
Emergency Services Management	102	95	82	90	85
Organizational Leadership	1043	1144	1043	767	446
RN-to-BSN			22	12	5
MASTER'S DEGREE PROGRAM	2015	2016	2017	2018	2019
MBA (Academic Practice)	217	237	227	187	76
MBA (Executive)	150	93	79	53	20
MBA (Healthcare Administration)	88	75	74	74	45
MBA (Healthcare –IT)	5	2	1	-	-
MBA (Human Resource Management)	121	146	149	145	79
MBA (IT)	19	12	4	-	-
Conflict Resolution	190	37	6	-	-
Criminal Justice	145	176	194	152	95
Education (Instructional Leadership)	173	129	3	37	33
Education (Teaching Excellence)	132	117	86	53	46
Grand Total	3199	3226	2935	2435	1485

Source: Office of Institutional Research and Effectiveness

Distance Education by Student Location

% of Out-of-State Students vs % of In-State Students Fall Semester Enrollment Numbers

2015		2016		2017		2018		2019	
Out of State	TN	Out of State	TN	Out of State	TN	Out of State	TN	Out of State	TN

ASSOCIATE DEGREE PROGRAM

Accounting	25%	75%	17%	83%	0%	100%	0%	100%	-	-
Business	4%	96%	15%	85%	12%	88%	15%	85%	12%	88%
Computer Information Systems	0%	100%	-	-	-	-	-	-	-	-
Criminal Justice	15%	85%	20%	80%	21%	79%	24%	76%	17%	83%
Customer Relationship Mgmt.	22%	78%	19%	81%	26%	74%	17%	83%	17%	83%
General Studies	10%	90%	0%	100%	0%	0%	0%	100%	0%	0%
Information Technology	0%	100%	0%	100%	-	-	-	-	-	-
Emergency Services Mgmt.	20%	80%	0%	100%	-	-	-	-	-	-
Liberal Arts	-	-	-	-	-	-	-	-	7%	93%

BACHELOR'S DEGREE PROGRAM

Criminal Justice	20%	80%	18%	82%	16%	84%	17%	83%	17%	83%
Emergency Services Mgmt.	15%	85%	14%	86%	18%	82%	14%	86%	9%	91%
Organizational Leadership	21%	79%	21%	79%	17%	83%	18%	82%	20%	80%
Nursing RN-to-BSN									20%	80%

MASTER'S DEGREE PROGRAM

MBA (Academic Practitioner)	17%	83%	17%	83%	15%	85%	19%	81%	16%	84%
MBA (Executive)	15%	85%	16%	84%	19%	81%	25%	75%	20%	80%
MBA (Healthcare Administration)	22%	78%	24%	76%	24%	76%	20%	80%	22%	78%
MBA (Healthcare-IT)	0%	100%	0%	100%	0%	100%	-	-	-	-
MBA (Human Resource Mgmt.)	17%	83%	13%	87%	11%	89%	18%	82%	20%	80%
MBA (Information Technology)	26%	74%	25%	75%	0%	100%	-	-	-	-
Conflict Resolution	11%	89%	14%	86%	17%	83%	-	-	-	-
Criminal Justice	18%	82%	16%	84%	0%	100%	19%	81%	18%	72%
Education (Instructional Leadership)	5%	95%	0%	100%	10%	90%	3%	97%	9%	91%
Education (Teaching Excellence)	8%	92%	6%	94%	16%	84%	4%	96%	13%	87%
Grand Total	18%	82%	18%	82%	16%	84%	17%	83%		

Source: Office of Institutional Research and Effectiveness

Retention Rates

Freshman Year	Cohort Total #	2 nd Year	3 rd Year	4 th Year	5 th Year	6 th Year	7 th Year	8 th Year
2012	474	63%	44%	38%	35%	33%	30%	28%
2013	381	59%	44%	38%	36%	34%	32%	
2014	626	56%	40%	34%	32%	38%		
2015	476	64%	46%	40%	N/A			
2016	400	60%	44%	37%				
2017	446	57%	40%					
2018	408	50%						
2019	421							

The chart below adjusts the retention rates removing students who left Bethel University and continued their education at another university.

Freshman Year	Cohort Total #	Total Transfers	Adjusted Total for Transfers	2 nd Year	3 rd Year	4 th Year	5 th Year	6 th Year	7 th Year	8 th Year
2012	681	206	475	76%	70%	69%	66%	66%	64%	98%
2013	381	130	251	77%	70%	70%	70%	69%	52%	
2014	626	210	416	73%	66%	64%	62%	48%		
2015	476	118	358	74%	60%	60%	64%			
2016	400	130	270	75%	61%	58%				
2017	446	139	307	68%	58%					
2018	406	122	284	53%						
2019	421	N/A	N/A							

Source: Office of Institutional Research and Effectiveness and National Student Loan Clearinghouse

BU



Academics

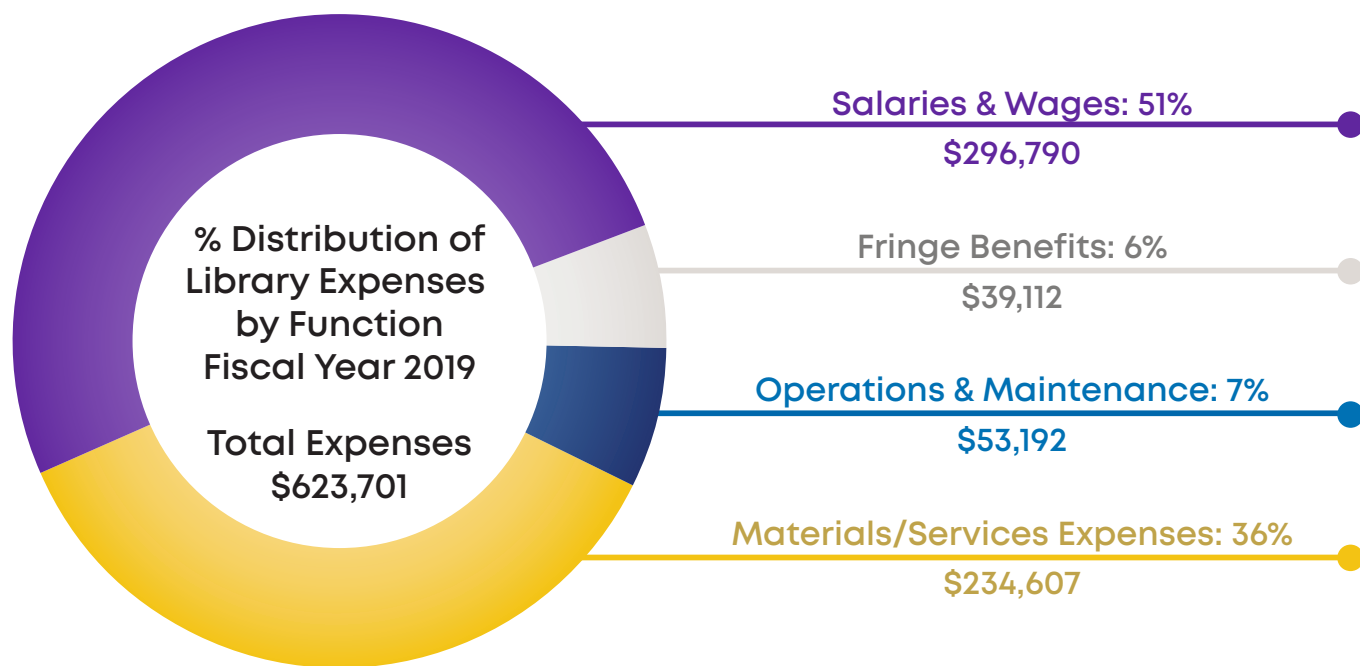
Bethel's Library Services

Bethel University provides a wide range of library and learning resources for students, faculty, and staff. All resources are available to all students and faculty. Instruction and guidance in the location and use of resources is available through the library staff both at the campus in McKenzie and through electronic means at all locations. Information is also available through the library website.

A large collection of electronic resources is available to all students and faculty regardless of their physical location. In addition, the Burroughs Learning Center located on the McKenzie campus offers study and meeting space for quiet study, group projects, and meetings. Printing is available for a nominal fee. The physical book collection is housed in the Burroughs Learning Center, although materials are shipped to students and faculty at off-campus sites and in online programs. Interlibrary loan is available to every student and faculty member.

Online Link to On-Campus Library Services:

College of Arts and Sciences and College of Health Sciences: bethelu.libguides.com/bulibrary



Reference Questions Answered:

College of Arts & Sciences: 34*
 College of Professional Studies: 1,089^

Instruction Presentations:

College of Arts & Sciences: 55*
 College of Professional Studies: 10^

* The Reference & Instructions numbers for main campus are lower than normal due to the COVID-19 shutdown during the Spring semester.

^ 10-month total

Library Collections and Circulation	Physical Collection	Digital/Electronic Collection
Books	24,235	191,041
Databases	--	87
Media	1,098	52,186
Serials	31	58,235
Total Collection	25,364	301,462
Library Circulation	1,581	40,510

Library Services for Online Students

Library

The Online Library supports the College of Professional Studies students with reference and instruction assistance. Users may reach librarians seven days a week through online chat, phone, text messages, video conference, or in-person meetings. Beginning at orientation, Librarians welcome students and introduce themselves as partners in learning. During orientation, students are introduced to the College of Professional Studies Library website that provides research guides, video tutorials, interactive tutorials, handouts, and an FAQ page. These resources are uniquely designed to benefit independent adult learners who research in the midst of busy schedules.

Throughout their program, students receive timely updates and instruction. Class-specific research video tutorials, created by Librarians in partnership with faculty, show students how to find relevant scholarly sources for particular assignments. In addition to class-specific instruction, faculty and students benefit from the point of need video tutorials on topics such as creating search terms, integrating research into essays, and bibliographic formatting.

Students enrolled in a course with a history of high drops receive special assistance through text messages. Librarians text students an offer to help and a link to course specific Library tools. In partnership with faculty, resources have been created to further support these courses.

Learning Services

Learning Services is available for the College of Professional Studies students through online chat, phone, text messages, video conference, or in-person. Learning Services partners with students to reach their educational goals by utilizing their specific strengths and resources. It can be challenging to balance the demands of life and school, but learning Services can ease the stress with goal setting, time management tools, effective study strategies, and more.

Link To Online Library Services

College of Professional Studies:
bethelu.libguides.com/cps

Bethel Online Library & Learning Services

2019-20 Accomplishments

(Note: the academic year is not over for the College of Professional Studies at this time. The numbers shown here are a 10-month total.)

378

Students assisted

1,089

Reference questions answered

50%

Students who contacted AAC for assistance improved their GPA

10

Instruction presentations produced

7

Video tutorials recorded

Learning Support & Tutoring Services (on-campus)

Bethel CASA

The Center for Academic Student Achievement is located in the lower level of the Burroughs Learning Center Library for College of Arts and Sciences and College of Health Sciences students.

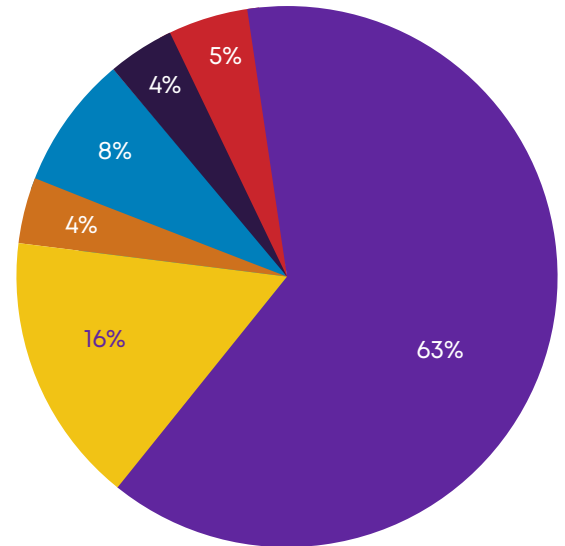
The mission of CASA at Bethel University is to provide an opportunity for students to grow intellectually in a positive and caring environment. All Bethel students are eligible to receive free academic services through CASA. This is a place where students of all learning levels can improve their abilities.

FALL TERM
2019
6005 VISITS



TYPES OF VISITS

- Book Reserve – 293
- Drop-In Tutor – 237
- Scheduled Appointment – 473
- Testing - 237
- Just Studying – 975
- Study Hall – 3,790

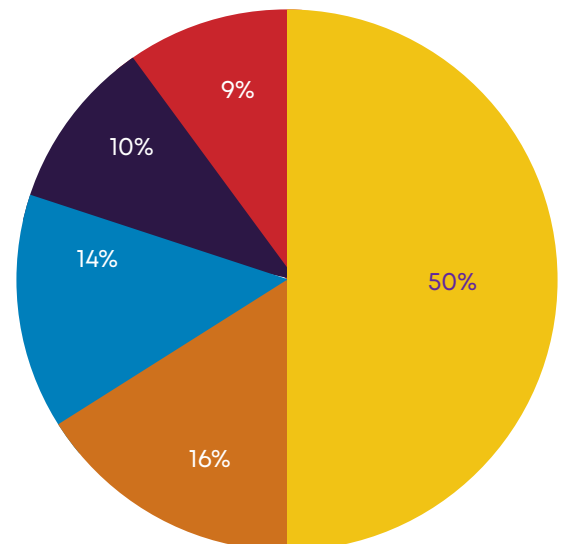


SPRING TERM
2020
889 VISITS*



TYPES OF VISITS

- Book Reserve – 80
- Drop-In Tutor – 92
- Scheduled Appointment – 127
- Testing - 146
- Just Studying – 444
- Study Hall – no longer offered



*Because of the threat of Covid-19, the campus was shut down on March 23, 2020 for the remainder of the spring semester. Students finished the term online and were not able to visit CASA.

Credit Hours Taken: Fall Semester 2019

College of Arts and Sciences (CAS)

High School Dual Enrollment Program	6,793
Undergraduate Programs*	31,443
Graduate Program (MAEd online).....	1,144
Graduate Program (MAEd on-campus).....	69
Total Hours all CAS Programs	39,449

*total is both Associate and Bachelor combined hours

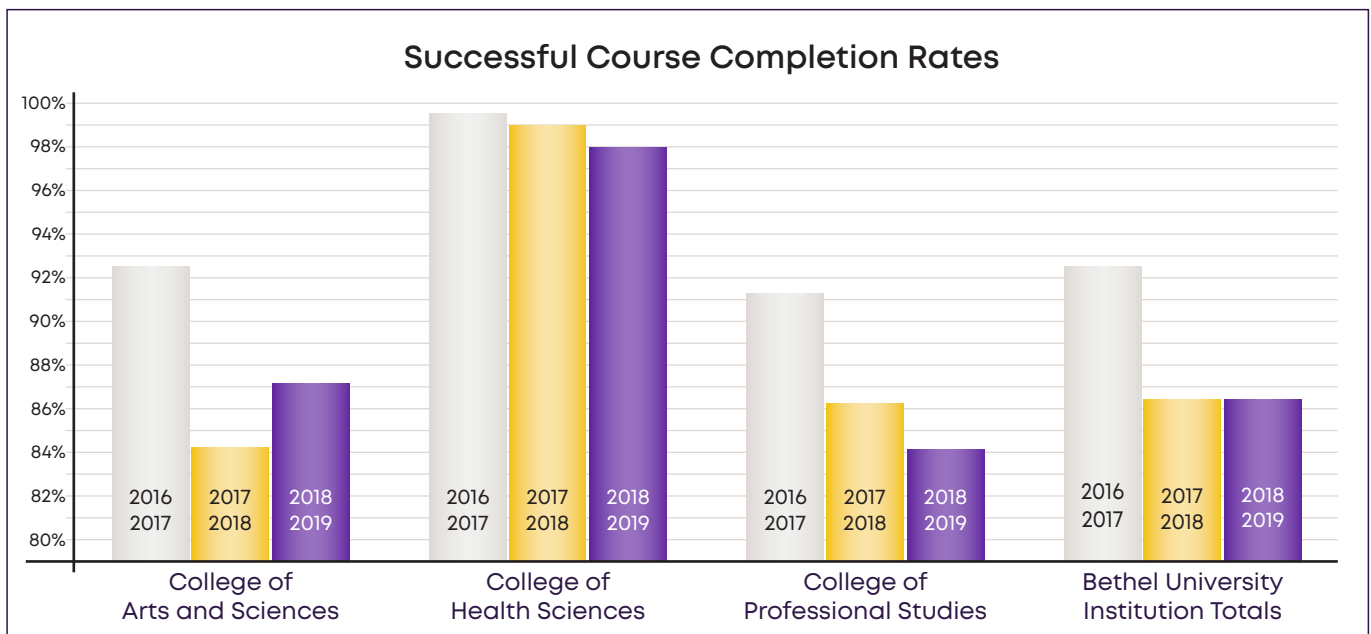
College of Health Sciences (CHS)

Certified Nursing Assistant Program.....	57
Bachelor's BSN 4-year Program	1,123
Bachelor's RN-to-BSN Program.....	72
Graduate Physician Assistant Program.....	4,844
Total Hours all CHS Programs	6,096

College of Professional Studies (CPS)

Associate Programs.....	7,815
Bachelor's Programs (online).....	17,649
Bachelor's Programs (on-campus).....	1,663
Graduate Programs (online MBA)	2,587
Graduate Program (online MSCJ).....	1,362
Total Hours all CPS Programs	31,076

Total Hours Bethel University (all colleges)..... 76,621



Source: Office of Institutional Research and Effectiveness

Non-Degree Programs

College of Arts and Sciences

High School Dual Enrollment Program

Bethel University's Dual Enrollment Program is a non-degree seeking program that allows eligible high school students to enroll in college classes concurrently with high school classes. Classes are taught either online or at the high school, and students may receive both high school and college credit if applicable.

Dual Enrollment Eligibility Information

Eligible students are in the 11th or 12th grade and have a 3.0 GPA in their completed high school courses OR an ACT composite score of 21 or higher. They must have the written approval of the high school principal, school counselor, and their parents/legal guardians.

Cost of Attendance

Bethel's dual enrollment tuition cost for the 2019-20 academic year is \$500 per 3 hour course before any grants or scholarships are applied. If students are enrolled in an online dual enrollment course, there is no additional charge for text. If a student is enrolled in a face to face class, the student is responsible for the cost of the class textbook and any other fees associated with the class.

High Schools in Tennessee Where Bethel's Dual Enrollment Courses Are Offered

- Adamsville High School
- Bolton High School
- Booker T Washington High School
- Bradford High School
- Central High School (Memphis)
- Collegiate School of Memphis
- Craigmont High School
- Cross Creek Christian School
- Douglass High School
- Dresden High School
- East High School
- Gibson County High School
- Gleason High School
- Greenfield High School
- Halls High School
- Hamilton High School
- Hollow Rock Bruceton Central High School
- Holloway High School
- Home School Institutes
- Houston High School - Memphis
- Humboldt High School
- Huntingdon High School
- Kingsbury High School
- Kirby High School
- Lewis County High School
- Manassas High School
- McKenzie High School
- Melrose High School
- Memphis Academy
- Mitchell High School
- Obion County High School
- Perry County High School
- Raleigh Egypt
- Ridgeway High School
- Sheffield High School
- Smyrna High School
- Stewart County High School
- Trezevant High School
- West Carroll High School
- Westview High School
- Westwood High School
- White Station High School
- Wooddale High School

Degree Programs & Majors



College of Arts and Sciences (CAS)

Associate of Science

- General

Bachelor of Science

- Biology (Emphasis: Biology Education)
- Biology (Emphasis: Field/Environmental Biology)
- Biology (Emphasis: General Biology)
- Biology (Emphasis: Pre-Professional Health)
- Business of Administration (Emphasis: Accounting)
- Business of Administration (Emphasis: Computer Information Systems)
- Business of Administration (Emphasis: Management)
- Chemistry
- Chemistry (Emphasis: Biochemistry)
- Child Learning and Development
- Criminal Justice Studies
- Exceptional Learning and Development
- Fitness and Wellness Promotion
- History
- Human Services
- Interdisciplinary Studies
- Mathematics
- Music Education
- Music Industry Studies (Emphasis: Music Business)
- Music Industry Studies (Emphasis: Music Production & Recording Arts)
- Physical Education
- Pre-Pharmacy (3 + 1 Program)
- Psychology
- Sociology
- Student Initiated Major

Associate of Arts

- General

Bachelor of Arts

- Art
- Christian Studies
- English
- History
- Human Services
- Interdisciplinary Studies
- Music
- Music (Emphasis: Performance)
- Music (Emphasis: Music and Worship)
- Psychology
- Sociology
- Student Initiated Major
- Theatre

Master of Arts in Education

- MAEd Non-Licensure
- Leadership Excellence

College of Professional Studies (CPS)

Associate of Applied Science

- Business
- Criminal Justice
- Customer Relationship Management
- Liberal Arts

Associate of Arts

- Business
- Criminal Justice
- Customer Relationship Management

Associate of Science

- Liberal Arts

Bachelor of Science

- Management & Organizational Development
- Organizational Leadership
- Criminal Justice
- Emergency Services Management

Concentration options available for some of these degree programs include:

- Healthcare Management
- Information Technology
- Customer Relationship Management
- Fire Science

Master of Science

- Criminal Justice

Master of Arts Business Administration

- Academic Practitioner
- Executive
- Healthcare Administration
- Human Resource Management

Certificate Programs (non-degree)

Undergraduate

- Business Management
- Criminal Justice
- Customer Relationship Management
- Emergency Services Management
- Healthcare Management
- Information Technology

Graduate

- Business Administration
- Criminal Justice
- Healthcare Administration
- Human Resource Management

College of Health Sciences (CHS)

Bachelor of Science

- Nursing
- RN-to-BSN

Master of Science

- Physician Assistant Studies

Licensure & Certification Rates

College of Health Sciences



Athletic Training Program

BOC Pass Rate Table

Once a BOC ID is matched to each student in a cohort, and the student has taken the BOC exam, this table will populate from data directly from the BOC. The aggregate pass rate is calculated by the number of graduates taking the exam divided by the number of graduates who pass the exam. Important note: The first time pass rate and total pass rate may be different than what was previously received by programs from the BOC in the Institution Pass Report. The BOC pass rate on previous reports from the BOC was calculated without regard to student cohort and was based on the BOC exam year (April-February of each year). BOC pass rate data posted on the program's website MUST match the data on this table.

Programs must meet or exceed a 3-year aggregate of 70 percent first-time pass rate on the BOC exam.

Student BOC Pass Rate	2014 2015	2015 2016	2016 2017	2017 2018	2018 2019	2019 2020	3-year aggre- gate
Number of students graduating from program.	8	8	12	12	4	4	20
Number of students graduating from program that took examination.	7	5	8	8	1	0	9
Number of students who passed the examination on the first attempt.	2	1	0	2	0	0	2
Percentage of students who passed the examination on the first attempt.	29	20	0	25	0	0	22
Number of students who passed the examination regardless of the number of attempts.	2	3	1	3	1	0	4
Percentage of students who passed the examination regardless of the number of attempts.	29	60	12	38	100	0	44

Student Graduation Rate:

Graduation rate (taken from United States Department of Education): Measures the progress of students who began their studies as full-time, first-time degree- or certificate-seeking students by showing the percentage of these students who complete their degree or certificate within a 150% of "normal time" for completing the program in which they are enrolled.

Graduation rate is calculated as: the sum of students with a Graduated status divided by the total number of students in the cohort (excluding students with the status of leave of absence (medical) or deceased).

Student Graduation Rate	2014 2015	2015 2016	2016 2017	2017 2018	2018 2019	2019 2020	3-year aggre- gate
Number of students graduating from program.	8	8	12	12	4	4	20
Student Graduation Rate (%)	89	80	60	52	50	36	48

Licensure & Certification Rates

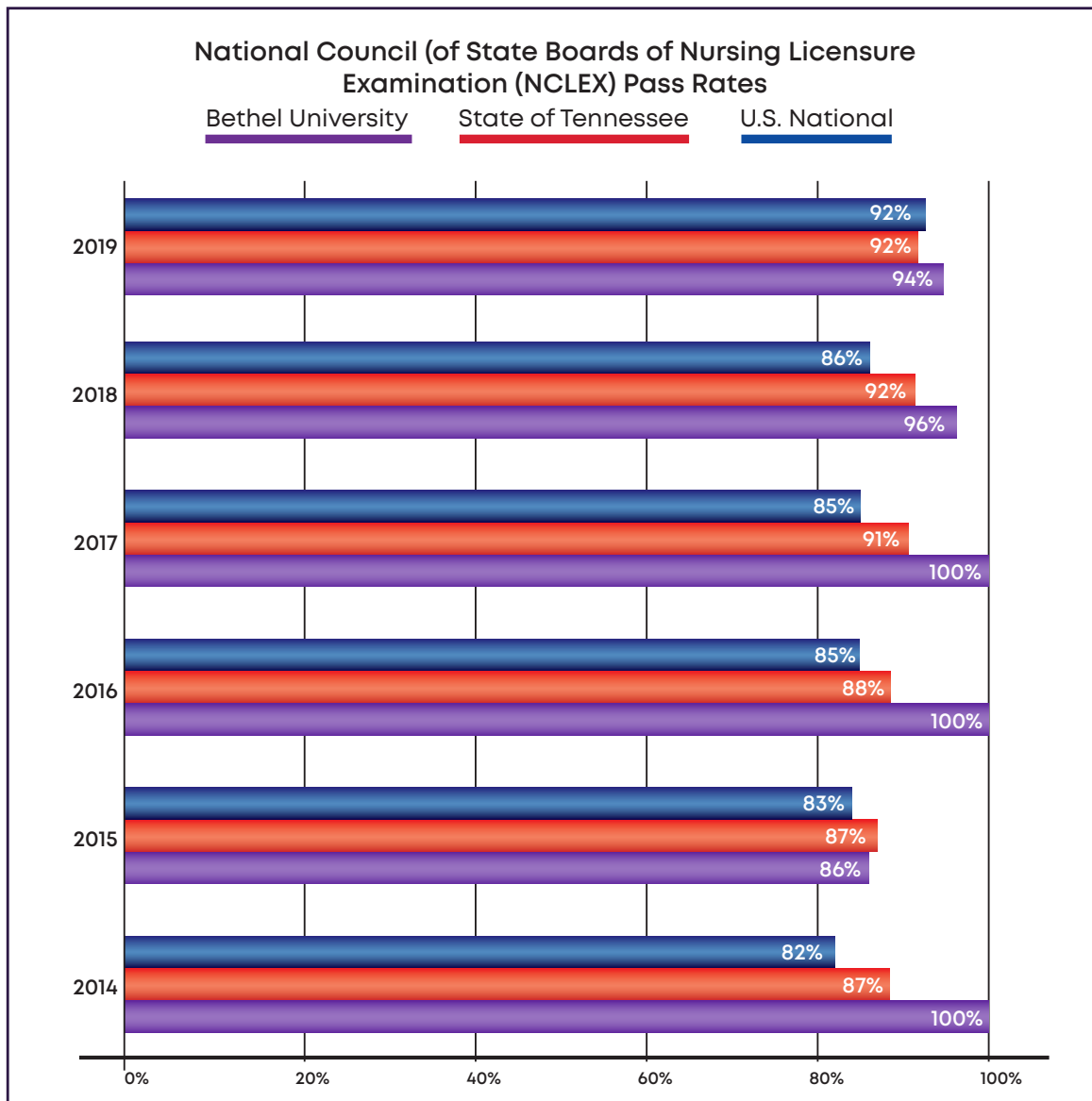
College of Health Sciences



Nursing Program

The Bethel University Bachelor of Science in Nursing degree prepares graduates for entry-level professional positions in primary, secondary, and tertiary care settings serving persons of all ages from diverse populations and for advancement to a graduate degree program in nursing. The program is approved by the Tennessee Board of Nursing and accreditation is granted by the Commission on Collegiate Nursing Education (CCNE). Candidates in Bethel University's Nursing Program are required to complete the National Council (of State Boards of Nursing) Licensure Examination. Successful completion of this examination is required for licensure as a Registered Nurse. Licensure is required of any graduate who wishes to practice as a Registered Nurse.

Bethel's Bachelor of Science in Nursing students have exceeded the National First-Time pass rates for the past seven years. In 2013, 2014, 2016 and 2017, the First-Time pass rates were 100%. In 2015, they dropped slightly below the State of Tennessee First-Time pass rates but still exceeded the National First-Time pass rates. Bethel's Nursing program continues to evaluate data to improve instruction and continue to exceed the National rates. *Source: National Center for Education Statistics (NCES)*



Licensure & Certification Rates

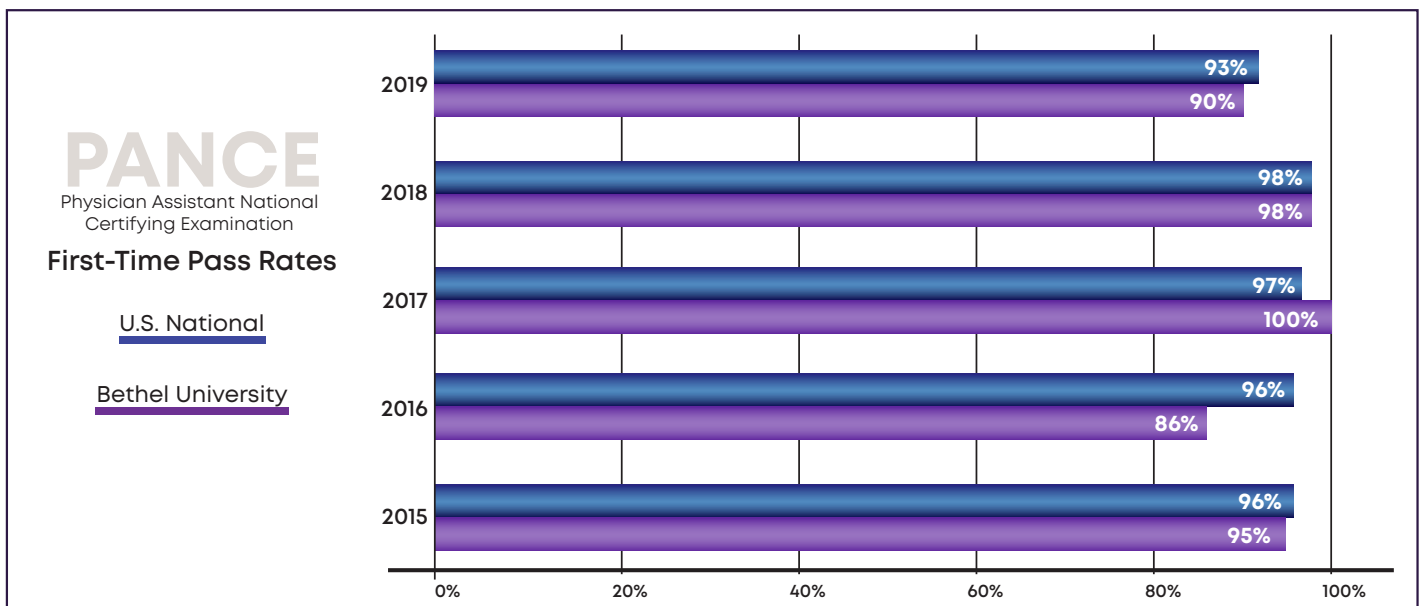
College of Health Sciences



Physician Assistant Studies Certification

Candidates in Bethel University's Physician Assistant Studies are required to complete the National Commission on Certification of Physician Assistants (NCCPA) Physician Assistant National Certifying Exam (PANCE). All U.S. states, the District of Columbia, and the U.S. territories rely on this certification as one of the criteria for licensure or regulation of physician assistants. Physician Assistant Studies continuously strives for excellence by making adjustments to course work as needed to meet or exceed National standards. *Source: Physician Assistant National Certifying Exam (PANCE)*

BETHEL UNIVERSITY PA PROGRAM DATA CLASS 2015-2019					
Class of	2015	2016	2017	2018	2019
Matriculants	49	43	50	50	50
Number of Graduates	44	42	48	50	50
Bethel PANCE First Time Pass Rate	95%	86%	100%	98%	90%
National First Time Pass Rate	96%	96%	97%	98%	93%
% of Graduates who ultimately passed the PANCE	98%	100%	100%	100%	100%
% Employed as PA	98%	100%	100%	96%	100%
Class of 2015 – 95% employment within 1-8 months of graduation					
Class of 2016 – 100% employment within 9 months of graduation					
Class of 2017 – 100% employment within 9 months of graduation (only 40% response rate)					
Class of 2018 – 96% employment within 6 months of graduation (only 52% response rate)					
Class of 2019 – 100% employment within 9 months of graduation (only 38% response rate)					



Licensure Completion Rates

Division of Education



2018-2019 EPP Data

2019-20 Undergraduate Clinical Experience edTPA Pass Rate

- Elementary Literacy (IEE) 100%
- Performing Arts (Music) 100%

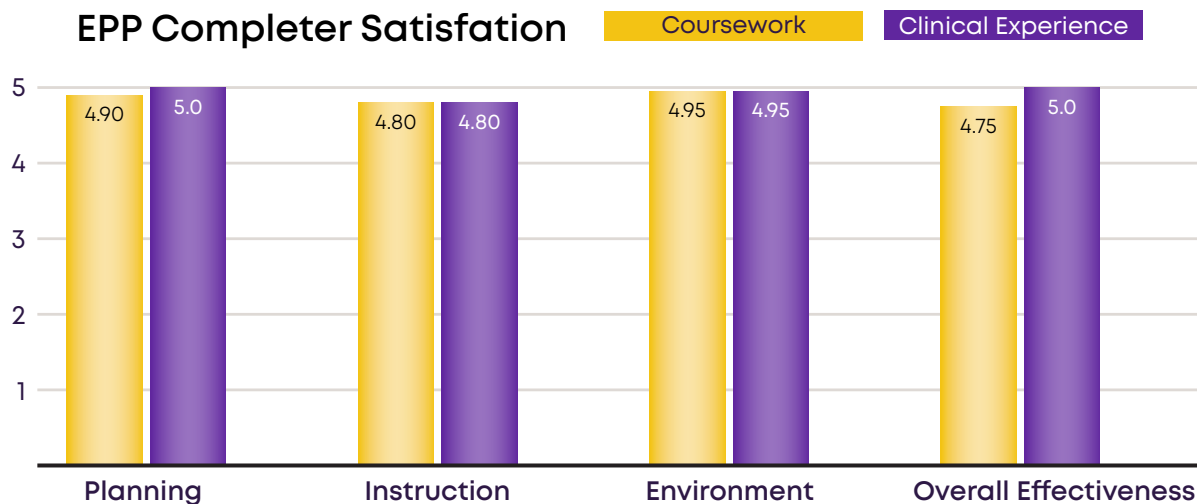
Praxis 6990 School Leaders Licensure Assessment Pass Rate: 100%

Bethel University's EPP Employer Satisfaction Data

- 87.3% of completers have an LOE score of 3 or higher
- 90.5% of completers have observation ratings of 3 or higher
- 98.67% of completers employed for at least two years (retention)

Completer Satisfaction Survey (scale of 1 - 5)

The EPP Completer Satisfaction Survey is designed to collect data about the completer's current position and the effectiveness of Bethel University's EPP in developing their competencies to be effective teachers. The survey had a 100% response rate for the 2019-20 academic year.



BU



Student Life

Residence Halls



Heritage Hall

- Address: 110 Bethel Court
- Year Built: 2011
- Square Footage: 75,000
- # of Dorm Rooms: 398



McDonald Hall

- Address: 116 Bethel Court
- Year Built: 1959
- Square Footage: 21,099
- # of Dorm Rooms: 45



Prosser Hall

- Address: 157 Campus Drive
- Year Built: 2005
- Square Footage: 21,052
- # of Dorm Rooms: 96

Residence Halls



West Hall

- Address: 218 Bethel Court
- Year Built: 1967
- Square Footage: 19,423
- # of Dorm Rooms: 40



University Hall

- Address: 100 Wildcat Lane
- Year Built: 2010
- Square Footage: 53,688
- # of Dorm Rooms: 256



Wildcat Cove

- Address: 939 Main Street
- Year Purchased: 2005
- Square Footage: n/a
- # of Students Housed: 108
(upper class and grad students only)

Student Activities

Student Events and Activities

Each semester multiple student activities are scheduled by the Office of Student Activities. These activities have included, but are not limited to:

- | | |
|--------------------------|---|
| Homecoming | Scavenger Hunts |
| Miss Bethel U Contest | Study Breaks |
| Puppy Yoga | Trivia Nights |
| Goat Yoga | Video Game Tournaments |
| Boo Bash | Bethel's Got Talent |
| Pancakes with the Prez | Jackson Generals Night |
| Twinkle Ball | Powder Puff Football |
| Coffee Houses | Formal Dances |
| Corn Hole Tournaments | Silent Disco |
| Escape Rooms | SuperBowl Party |
| Field Day | Giant Snow globe Pictures |
| Game Nights | Pumpkin Painting |
| Karaoke | Cookie Decorating |
| Minute to Win It | Night on the Quad - music, food, dancing, games |
| Movie on the Lawn Nights | |

With the arrival of Covid-19 and the campus shutting down on March 23, dramatic changes to spring events occurred. Faculty, staff, and students were looking forward to returning from spring break to celebrate I ♥ BU Week, which after its inaugural year in 2018 has quickly become a cherished campus tradition. From kicking off the week with Spring Fling, Dogs with Deans, The Amazing Race, and the festivities leading up to the Purple and Gold Scrimmage, plans were set aside. So too were plans regarding the Bethel Board Meeting, the Faculty and Staff Service Awards Luncheon, SGA Open Forum, the College of Arts and Sciences Award Night, the celebration of the last day of classes with Food Truck Friday, President Butler's Late Night Study Break, and the recognition of the retirement of a well-regarded faculty member. Perhaps the most keenly felt change in plans came with the decision to postpone May 2020 Commencement. While none felt the loss of that event more than our graduating students, the faculty and staff who have taught, mentored, and nurtured them throughout their college years missed celebrating this milestone with them.



Student Organizations

Student Government

Each year the student body elects representatives to serve as part of the Student Government Association. This group gives voice to student concerns on various faculty and staff committees.



Honors Societies

Gamma Beta Phi, a national honor society, recognizes superior scholastic achievement and is composed of membership by invitation only to the top 20% of each class. The group participates in service projects and attends national conventions each year.



Sororities & Fraternities

Bethel offers multiple sororities and fraternities. These groups participate in various community service projects and campus events throughout the year.

Fraternities:

Alpha Phi Alpha Fraternity Inc.
Kappa Alpha Psi Fraternity Inc.,
Kappa Phi Rho, Kappa Sigma
Omega Psi Phi Fraternity Inc.
Phi Beta
Sigma Fraternity Inc.
Phi Delta Sigma
Phi Mu Alpha
Zeta Delta Tau

Sororities:

Beta Sigma Rho
Delta Phi Nu
Lambda Sigma
Zeta Nu Theta
Zeta Phi Beta



BethelUniversity
Fraternity & Sorority Life

LIVE IT ONCE. LIVE IT RIGHT.

Academic/Social Organizations

Bethel University's student organizations blend academic knowledge, social activities, and allow students the opportunity to practice what they learn in the classroom in a real-world environment. Organizations include American Chemical Society, Beta Sigma Phi, Gama Beta Phi, and Student Tennessee Education Association (STEA). In addition, there are several service and special interest groups available such as Child Abuse Recognition Effort, Ignite CMI, Circle K, Reading Club, Scrivener, and Wesley Fellowship.



Christian Life

The campus chaplains strive to lead the Bethel community in living out our Christian heritage and faith in many ways. Bethel was founded by and continues to work closely with the Cumberland Presbyterian Church.

The University supports Christian worship through musicals and dramas that are performed in individual churches and encourages student involvement with local churches. We also provide facilities for continuing education opportunities within the denomination.



Other organizations represented on campus include: Cumberland Presbyterian Ministry, Baptist Collegiate Ministry (BCM), Bethel Wesley Fellowship, Christian Medical and Dental Association Student Chapter (CMDA), and Fellowship Christian Athletes (FCA). All students are welcomed and encouraged to participate in these organizations.

Weekly Worship Services:

In the Tuesday morning chapel services, ministers and speakers from different denominations are invited to preach. Bethel University works cooperatively with many different Christian denominations to meet students' needs.

Communion Services:

A weekly liturgical Holy Communion service is on Thursday mornings in the chapel. All are welcome to participate, but no one is required to partake in the elements. If non-Christians have questions about the faith, they are welcome to observe and be respectful as we worship. The Chaplain is available after services or during office hours to answer questions. Everyone is welcome to attend the services!

Chapel Requirements*

Full-time traditional undergraduate freshman, sophomores, and juniors (including transfers and commuters) are required to attend the weekly worship services. This requirement can be fulfilled by attending Chapel service on Tuesdays and/or the Communion service on Thursdays.

If students cannot attend the weekly services, they can give an hour of community service for each required worship service.

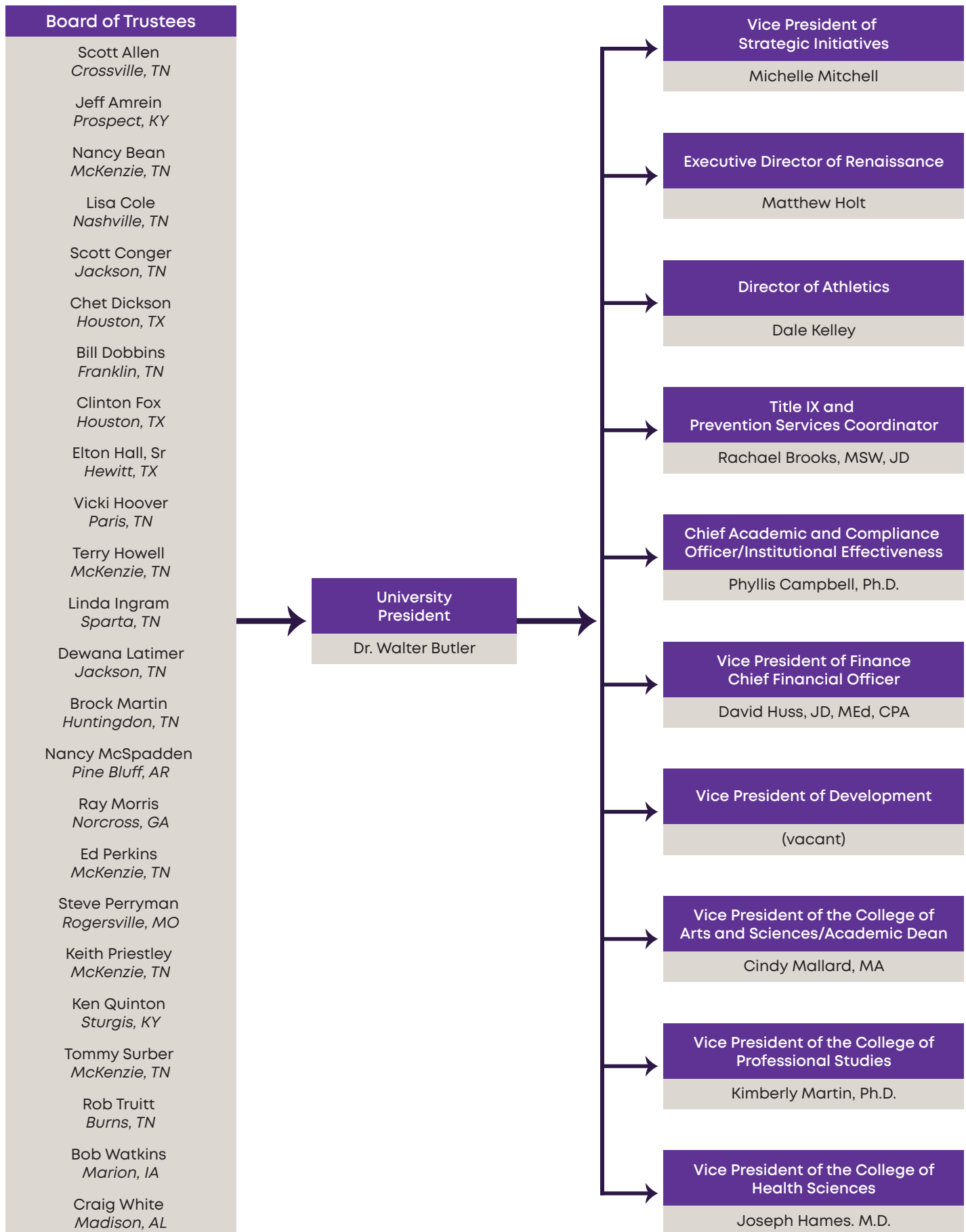
*As a result of COVID-19, the Office of the Chaplains suspended all Chapel requirements for the remainder of the 2020 spring semester. In spite of the inability to worship together on campus, Chapel opportunities were made available virtually. Spiritual Wellness Zoom meetings were offered, and inspirational scriptures, videos, and news were shared via email and social media to encourage students, faculty, and staff.

BU



Faculty
& Staff

University Organizational Chart



Administration

University Level



Office of the President

Rachael Brooks	Title IX and Prevention Services Coordinator
Walter Butler	University President
Linda Hearn	Administrative Assistant
Vicky Williams	Executive Assistant to the President

Human Resources

Carolyn Dotson	Director of Human Resources
Will Gibson	Human Resource Payroll Specialist
Karen Phelps	Benefits Specialist
Pam Hornebuckle	Associate Director of Human Resources
Crystal Simon	Training and Development Coordinator

University Relations

Myra Carlock	Director of University Events
Terri Merrill	Graphic Designer/Special Projects Manager
Michelle Mitchell	VP of Strategic Initiatives
Christiana Odum	Marketing Coordinator
(vacant)	Web/Social Media Specialist

Development

Dale Henry	Development Officer
Michelle Nail	Development Executive Coordinator
Brian Page	Community Relations Coordinator
Amy Thompson	Project Manager - Whosoever Will Ministry Bridge
(vacant)	Director of Development

University Library and Academic Achievement

Rhonda Allen	Public Service Supervisor
Brandon Campbell	Technical Services
Lara Roberts	Director of the Center for Academic Student Achievement/Retention
Amber Watson	Center for Academic Student Achievement Front Desk Supervisor
Jill Whitfill	Director of On-Campus Library Services
(vacant)	Assistant Library Director Assistant PR

University Registrar

Becky Hames	University Registrar
-------------	----------------------

Compliance

Phyllis Campbell	Chief Academic/Compliance/Accreditation Officer
Jessica Martin	Accreditation/Live Text Coordinator
Lisa Tyler	Institutional Research
(vacant)	Institutional Reporting and Accreditation Analyst

Administration

University Level



Security

Tavis Carr	Security Officer
Henry Carter	Security Officer
Mack Chambers	Security Officer
Samuel Cole	Security Officer
Tyler Haley	Security Officer
Daniel Hayes	Security Officer
Rhonda Ross	Security Administrative Assistant
Daniel Thomas	Chief of Security
David Trotter	Security Officer
Allen Walls	Security Officer
Johnny Williams	Security Officer

Supplemental Services/Other Administration

Ruth Carroll	Insurance/Safety Coordinator
Lisa Gilliam	Switchboard Operator

Maintenance

Joel Burnine	Grounds Keeper
Steve Cude	Maintenance
Barbara Freda	Admin Assistant for Maintenance/Grounds
Alan Gooch	Maintenance
Kevin Hill	Maintenance
Farrell Hubble	Maintenance
Jerry Hutchens	Assistant Maintenance Director
John Maxwell, Jr.	Grounds Foreman
James Mayo	Maintenance
David Rush	Director of Grounds
Randy Tanaka	Maintenance Director

Housekeeping

Sandra Adams	Assistant Housekeeping Supervisor
April Beard	Housekeeping
Lori Chandler	Housekeeping Supervisor
Montrie Eaton	Housekeeping
Donna Hubble	Assistant Housekeeping Supervisor
Judith Hubble	Housekeeping
Autumn Isbell	Housekeeping
Enrique Sanchez	Housekeeping
Becky Tanaka	Housekeeping
Margaret Vowell	Housekeeping
Ricky Wofford	Housekeeping

Office of the Chaplain

Garret Burns	University Associate Chaplain/Community Engagement
Anne Hames	University Chaplain

Administration

University Level



Office of Information Technology

Jimmy Bomar	IT Director
Jamie Coomer	Application Support Specialist
Mark Kelly	IT Network Administrator
Jarvis Northern	IT Help Desk Tech
Misty Price	IT Help Desk Tech
David Scarbrough	Application Support Administration
Gary Williams	Fire Life Safe/Access Con

Business Office

Sharon Anderson	Collections/Billing Coordinator
Brooke Cary	Accounting Specialist
April Chace	University Billing Coordinator
Deborah Chambers	Collections/Billing Coordinator
Lauren Cunningham	Director of Business Affairs
Michelle Ghyers	Administrative Assistant to the VP/CFO
Cristy Holland	Insurance/Billing Coordinator
Jack Holland	Business Office Compliance Coordinator
David Huss	VP of Finance/CFO
Jannette Jackson	University Billing Coordinator
Heather MCGaw	Accounts Specialist
Wanda Merchant	Senior University Billing Coordinator
Tina Rawls	Accounting Specialist
Regina Simpson	Director of Traditional & Modular Billing
Lisa Stephens	University Billing Coordinator
Trina Vickers	Senior University Billing Coordinator

Financial Aid

Kim Borneman	Traditional Financial Aid Counselor
Brenda Bradshaw	Director of Traditional Financial Aid
Kayla Brasfield	Modular Financial Aid Counselor
Lori Brisendine	Modular Financial Aid Counselor
Amy Bynum	Traditional Financial Aid Counselor
Kim Callahan	Associate Director of Modular Financial Aid
Mark Cunningham	Modular Financial Aid Counselor
Rosa Dabbs	Senior Modular Financial Aid Counselor
Karen Hutson	Senior Modular Financial Aid Counselor
Cassandra Johnson	Traditional Financial Aid Counselor
Brandi Lee	Director of Modular Financial Aid
Crystal Legens	Associate Director of Modular Financial Aid
Seth Martin	Executive Asst VPFinance/CFO Special Projects
Tiffany McCutcheon	Senior Modular Financial Aid Counselor
Amanda Ninness	University Financial Aid Loan Originator
Rachel Sawyers	Modular Financial Aid Counselor
Cheri Wharton	Traditional Financial Aid Counselor
Sarah Wimberly	Modular Financial Aid Counselor

Administration

College of Arts and Sciences



Office of the Vice President & Academic Dean

Kathy Gearin	Executive Administrative Assistant to CAS VP
Cindy Mallard	Vice President College Arts and Sciences/Academic Dean

Renaissance Performing Arts Program

Sarah Allen	Director Renaissance Choir
Bala Boyd	Associate Director Renaissance Theatre
Keith Cottrill	Director Renaissance Regiment
Aubrey Doyle	Director Renaissance Theatre
Ryan Griffin	Director of Renaissance Relations
Elyse Henderson	Renaissance Administrative Assistant
Shelby Hennis	Renaissance Technical Assistant
Matthew Holt	Renaissance Executive Director
Daniel Howell	Renaissance Tech Director
Tremayne Johnson	Director of Renaissance Percussion
Connie McCain	Associate Director Renaissance Choir
Kevin Moore	Associate Director of Renaissance Vocal

Division of Education

Morgan Butler	Division Chair
Ginger Evans	Student Services Representative
Alanna Williams	Associate Director of Student Services/Advisor

Dual Enrollment

Amber Gregson	Program Advisor Financial Aid Dual Enrollment
Kimberly Houston	Dual Enrollment Admissions
Craig Lunn	Director of Dual Enrollment

Admissions/Enrollment Services

Lisa Andrews	In-House Recruitment
Lorey Basford	Associate Director of Admissions
Brad Borneman	Recruiter
Traci Crawford	Recruiter
Terri Delaney	Registration Coordinator
Wes Hatcher	Recruiter
Tina Hodges	Director of Admissions
Ellen Pruitt	Administrative Assistant
Aubrey Rodgers	Recruiter
Brittany Twilbeck	In-House Recruitment
Stephen White, III	Prospect Coordinator

Registrar

Michelle Fussell	Records Clerk
Deborah Noble	Registrar
Natasha Parker	Assistant Registrar
Karen Saldana	Assistant Registrar

Administration

College of Arts and Sciences



Student Services/Student Life

LuJodia Bell	Director of Clinical Services
Mandy Brewer	Director of Student Activities
Jane Campbell	International Student Coordinator
Tan Gee Deem	VA and Disability Services Coordinator
Sandra Loudon	Dean of Student Development
Katie McGill	Director of Greek Life/Intramurals
Emily Myers	Director of Career Services & Sophomore Counselor
Janice Wilcox	Student Development Office Manager

Residence Life

Aaliyah Albea	Resident Director – Wildcat Cove
Marcaous Bailey	Resident Director – Heritage Hall
Peggy Carter	Director of Residence Life & Housing
Alyssia Easley	Resident Director – University Hall
Madeline Gray	Resident Director – Prosser Hall
Bailey Timmons	Resident Director – West Hall

See Athletics Section for Athletics Staff List

Office of the Vice President

Joseph Hames

Vice President of the College of Health Sciences

Administration/Student Health

Jack Allison

Medical Director

Christine Esch

Administrative Assistant/Immunization Coordinator

Deborah Noble

Registrar

Karen Saldana

Assistant Registrar

Nursing Program

Jason Hypes

Campus Lab/Simulation

Jenny Webb

Nursing Program Director/Assistant Professor of Nursing

Physician Assistant Program

Sandy Atwill

Associate Director/Recruiter

Kathryn Bloodworth

Admissions Coordinator

Cynthia Kee

BU PAP Recruiter

Stacey Lewis

PA Program/Department Manager

Andrea Parrish

PA Clinical Coordinator

Janet Peeler

PA Academic Coordinator

Trent Scates

PA Program Director/Associate Professor

Kerri Smith

Interim Director/Academic Director/Associate Professor

Athletic Training Program

Nikki Holland

AT Program Director

Administration

College of Professional Studies



Office of the Vice President

Kristy Edgin	Executive Assistant	Paris Campus
Kimberly Martin	Vice President of CPS	Paris Campus
Ashley Webb	Director of Strategic Communications	Jackson Campus

Academic Affairs

Mandy Fisher	Academic Dean	Paris Campus
Cindy Gurley	Academic Affairs Coordinator	Paris Campus
Daniel Keeton	Director of Continuing Education	Nashville Campus
Kristy Milan	Assistant Academic Dean	Paris Campus
Brad Moore	Assistant Academic Dean	Jackson Campus

Administration

Pam Hornbuckle	Associate Director of Human Resources	Jackson Campus
----------------	---------------------------------------	----------------

Admissions/Enrollment

Jessica Gayters	Admissions Counselor	Nashville Campus
Rebecca Henson	Associate Director of Admissions	Nashville Campus
Jessie Lewis	Admissions Counselor	Nashville Campus
Tabitha Moore	Admissions Counselor	East TN Outreach
Kensley VanDyke	Admission Counselor	Jackson Campus

Student Advisors

Renee Akers	Director of Advising	Paris Campus
Aailyah Cottle	Advisor	Clarksville Campus
Julie Daniel	Lead Advisor	Clarksville Campus
Heather Davis	Sr. Advisor	Clarksville Campus
Erin Dixon	Advisor	Paris Campus
Lynnsha Howard	Advisor	Clarksville Campus
Sherrye Hudson	Sr. Advisor	Paris Campus
Davileen Long	Advisor	Clarksville Campus
Karen Millraney	Advisor	Paris Campus
Cassie Pence	Sr. Advisor	Clarksville Campus
Lisa Rice	Advisor	Clarksville Campus
Latoya Rutherford	Advisor	Jackson Campus
Lakesha Taylor	Advisor	Memphis Campus
Lamerle Thomas	Senior Advisor	Nashville Campus
Karen Transou	Senior Advisor	Jackson Campus
Carmellia Wright	Advisor	Memphis Campus

Administration

Professional Studies



Online Library & Learning Services

Jen Held	Distance Education Librarian	Nashville Campus
Leslie Henegar	Learning Services Support	Paris Campus
Brook Isom	Part-time Distance Education Librarian	Nashville Campus
Elizabeth Park	Director of Online Library Services	Nashville Campus

IT/Help Desk

Quin Ewaldson	Senior IT Help Desk	Nashville Campus
---------------	---------------------	------------------

Military/Veterans

Sylvana Matthews	Military & Veterans Affairs	Clarksville Campus
LaTara Hopson	VA Benefits Coordinator	Clarksville Campus
Alice Sanborn	Veteran Clerk	Clarksville Campus

Recruitment

Rick Bankey	Recruiter	Jackson Campus
Mikki McLeary	Recruiter	McKenzie Campus
Brittany Morgan	Recruiter	Paris Campus
Terry Morris	Recruiter	Clarksville Campus
Kim Nichols	Recruiter	Memphis Campus
Jackie Puckett	Recruiter	Kentucky Outreach
Josie Russell	Recruiter	East TN Outreach
Lance Tasker	Director of Recruitment	Clarksville Campus

Registrar

Beth Bisciglia	Transcript Evaluator	Clarksville Campus
Kari King	Transcript Clerk	Clarksville Campus
Kayla Martinez	Registrar	Clarksville Campus
Rhomeikia Murphy	Graduation Records Clerk	Clarksville Campus

Registration

Anastasia Love	Registration Supervisor	Paris Campus
Samantha Johnsen	Registration Coordinator	Paris Campus

Full-Time Faculty

College of Arts and Sciences



William Atkins (2018)

Visiting Instructor of Mathematics

B.S., Bethel University

M.S., Murray State University

Kathleen Baczynski (2014)

Assistant Professor of Biology

A. S., Luzerne County Community College

B.S., College Misericordia

M.S., University of Maryland

Ph.D., Bowling Green State University

Christopher T. Burket (2007)

Professor of Biology

B.S., Manchester College

M.S., Ball State University

Ph.D., Worcester Polytechnic Institute

John M. Buteyn (2014)

Assistant Professor of Music

B.A., B.S., Houghton College

Master of Music, Georgia Southern University

Morgan G Butler (2018)

Instructor of Education

B.S., Bethel University

M.S., Bethel University

Ed.D Trevecca Nazarene University

Jon T. Carlock (1993)

Professor of Religion and Philosophy

Hannibal Seagle Bible Chair

B.A., Bethel University;

M.Div., D. Min., Vanderbilt University

Sabrina Chambers (2011)

Assistant Professor of English

B.S., Tennessee Technological University

M.A., East Tennessee State University

M.A.Ed., Bethel College (McKenzie, TN)

Pedro C Chavez (2019)

Assistant Professor of Psychology

B.S., Arizona State University

M.A., The University of Texas at Austin

Ph.D., The University of Arizona

Brad A. Cliff (2012)

Division Chair of Health and Physical Education

Associate Professor of Health, Physical Education

B.S., M.S.Ed., Ph.D., Middle Tennessee State

University

Jason Cole (2011)

Associate Professor of Art

B.A. Bethel University

M.F.A. Memphis College of Art

Thomas Crawford (2014)

Assistant Professor of Psychology

B.S., Georgia College and State University

Ph.D., Arizona State University

Alan Cross (1998)

Professor of Music

B.S., University of Houston

M.C.M, Southwestern Baptist Theological Seminary

M.M., D.M.A., University of Southern Mississippi

D.J. Culp, Jr. (2016)

Instructor of Music

B.M., M.M.E., Murray State University

Daniel A. Dalrymple (2009)

Associate Professor of History

Director of Honors Program

B.A., Ph.D., Michigan State University

Joseph Alex Debonis (2009)

Associate Professor of English

B.A., Indiana University

M.A., Illinois State University

Ph.D., University of Cincinnati

Full-Time Faculty

College of Arts and Sciences



Ronald Lynn Deming (1996)

Professor of Computer Information Systems

A.A., University of New York

B.S., Southern Illinois University

M.A., Webster University

Ph.D., Capella University

Andrew Evans (2014)

Assistant Professor of Chemistry

B.S., Bradley University

M.S., Purdue University

Ph.D., Arizona State University

Stacie D. Freeman (2005)

Associate Professor of Sociology

B.S., The University of Tennessee at Martin

M.S.W., The University of Tennessee

Shannon Godwin (2007)

Professor of Education

B.S., Florida State University

M.Ed., Trevecca Nazarene University

Ed.S., Ed.D., Union University

Marion Elaine Graham (2003)

Professor of Speech and Theatre

B.A., Geneva College

M.F.A., Northern Illinois University

Joshua S. Greer (2019)

Assistant Professor of Health and PE

B.S., The University of Tennessee, Martin

M.A. Ed, Bethel University

Audrey Hamilton (2016)

Assistant Professor of Speech and Theatre

Costume Designer

B.F.A., Mississippi University for Women

M.A.T., The University of West Alabama

M.F.A., The University of Alabama

Stephen E. Haynes (2014)

Associate Professor of Speech and Theatre

A.S., Columbia State Community College

B.S., Austin Peay State University

M.F.A., Louisiana State University

Keith Herris (2006)

Division Chair of Music and Religion

Professor of Music

B.A., Goshen College

M.M., University of Oklahoma

D.M.A., Michigan State University

William Paul Hetrick (1998)

Associate Professor of Business Administration

B.S., M.B.A., Youngstown State University

A.B.D., University of Kentucky

Robert Hicks (2004)

Associate Professor of Accounting

B.S., M.Ac., The University of Tennessee at Martin

Junior Hopwood (2017)

Assistant Professor of Sociology

B.S., M.S., University of The West Indies

Ph.D., Howard University

Steve Isbell (2012)

Associate Professor of C.I.S. and Business

B.S., Bethel University

M.B.A., TUI University

Jeffery L. Johnson (2017)

Assistant Professor of Sociology

B.S., Shippensburg University

M.A., Ph.D., George Mason University

Roger C. Johnson (1980)

Professor of Physics and Computer Science

A.B., Augustana College

M.A., DePauw University

Ph.D., University of Iowa

Full-Time Faculty

College of Arts and Sciences



Sarah Keller (2015)

Assistant Professor of Biology
B.S., M.A.Ed., Bethel University
Graduate Study, Clemson University

Sarah Kidd (2003)

Division Chair of Social Sciences
Professor of History
B.A., M.A., University of Alabama-Huntsville
Ph.D., University of Missouri

Joshua J. Klaassen (2015)

Assistant Professor of Chemistry
B.S., Nebraska Wesleyan University
Ph.D., University of Missouri Kansas City

Alex Klyuyenko (2011)

Associate Professor of Physics and Mathematics
M.S., Kirovohrad, Ukraine Institute of Agricultural
Machine Construction

Darya Klyuyenko (2018)

Instructor of Biology
B.S., M.A.Ed, Bethel University

Roy David Lancaster (2004)

Professor of Religion
B.A., Bethel University
M.Div., Yale University Divinity School

Timothy W. Lindsey (2003)

Professor of Human Services
B.S., Bethel University
M.S.W., Louisiana State University (LCSW)

Sandra L. Loudon (1992)

Director of College Orientation / Lecturer of COE
Dean of Student Services
B.S., Murray State University
M.A.Ed., Bethel University

Cindy Mallard (1999)

Vice President College of Arts and Sciences
Associate Professor of English
B.A., Bethel University
M.A., The University of Memphis

Jennifer Marlow (2014)

Assistant Professor of History
B.A., Saginaw Valley State University
Ph.D., Michigan State University

James McAllister (2011)

Professor of Biology
B.A., University of Massachusetts at Amherst
M.A., M.Phil., Ph.D., University of Kansas

Charles F. McConnell (2009)

Associate Professor of Psychology
A.S., Dyersburg State Community College
B.A., M.S., Ph.D., The University of Memphis

Sara M. McIntosh (2012)

Associate Professor of English
B.A., The University of Tennessee at Martin
M.A., Murray State University

Jaime McLean (2011)

Associate Professor of History
B.A., University of Windsor
Ph.D., Michigan State University

Meagan Meacham (2018)

Instructor of Business and Accounting
B.S., University of Tennessee at Martin
M.Acc., Middle Tennessee State University

Alacia Mitchell (2011)

Associate Professor of Business
B.S., Bethel University
M.B.A., Lakeland College

Full-Time Faculty

College of Arts and Sciences



John P. Nelson (1992)

Professor of Biology

B.A., Lycoming College

M.S., University of North Dakota

Ph.D., The University of Memphis

Carleton A. (Tony) Palmer (2017)

Assistant Professor of Psychology

B.A., Furman University

M.S., University of North Carolina (Chapel Hill)

Ph.D., University of North Carolina (Chapel Hill)

Scott R. Paterson (2018)

Instructor of Health & Physical Education

B.S., Lambuth College

M. Ed., Union University

Patricia (Trish) Price (2019)

Assistant Professor of Education

B.A., University of South Carolina

M.A., Southwestern Baptist Theological Seminary

Ed. S., Union University

Janet Reid (2003)

Professor of Education

B.A., M.A., Ph.D., Mississippi State University

Jeremy R. Ricketts (2012)

Associate Professor of English

B.A., University of Memphis

M.A., University of Alabama

M.Ed., University of South Florida

Ph.D., University of New Mexico

Jessica Roberson (2008)

Division Chair of Humanities

Associate Professor of English

B.A., Bethel University

M.A., Southeast Missouri State University

Sara McKeehan Hakim Rognstad (2012)

Professor of Mathematics

B.A., Gonzaga University

M.S., Ph.D., Washington State University

Teresa G. Rose (2004)

Associate Professor of English

B.S., M.A., Murray State University

A.B.D. University of Mississippi

Todd A. Rose (2009)

Associate Professor of Criminal Justice

B.S., Murray State University

J.D., Vanderbilt University

Bryan Sandor (2017)

Assistant Professor of Mathematics

B.S., B.S., University of Tennessee (Martin)

M.S., Western Kentucky University

M.A., University of Kentucky

M.A., Ph.D., University of Alabama

Poppy Scarbrough (2012)

Associate Professor of Art

B.A., University of Illinois, Springfield

M.F.A., San Francisco Art Institute

James A. Scruton (1990)

Professor of English

Mary B. Holmes Professor of Literature

B.A., M.A., Eastern Illinois University

Ph.D., The University of Tennessee

Sharon K. Scruton (1990)

Associate Professor of English

B.A., M.A., Eastern Illinois University

William J. Shelton, Jr. (1993)

Associate Professor of Spanish and English

B.A., M.A., Murray State University

M.A., The University of Memphis

Beth Sisson (2016)

Instructor of Special Education

B.S., M.Ed., Bethel College

Full-Time Faculty

College of Arts and Sciences



Irina Smith (2003)
Associate Professor of Mathematics
B.S., Moscow Regional Pedagogical University
M.S., Murray State University
M.B.A., Bethel University

Christopher Stampone (2018)
Assistant Professor of English
B.A., State Univ. of New York College at Buffalo
M.A., Brock University
Ph.D., Southern Methodist University

Julie Stauffer (2019)
Instructor of Health & Human Performance
B.A., Cedarville University
M.S., California University of Pennsylvania

Lauren Tate (2019)
Assistant Professor of Education
B.S., The University of Tennessee
M.A.Ed., Bethel University
Ed.D., University of Memphis

Hector Tato (2013)
Associate Professor Criminal Justice
A.A., Miami Dade College
B.A., Florida International University
Ph.D., Universidad del Norte (Columbia)

Christopher R. Terry (2009)
Associate Professor of Mathematics
B.S., Bethel University
M.A., Murray State University

Malissa L. Vaughn (2000)
Associate Professor of Health, Physical Education
B.S., Lambuth University
M.S., The University of Memphis

Richard W. Vaughn (2019)
Assistant Professor of Criminal Justice
B.S., Lambuth College
J.D., The University of Memphis

Mark Walton (2016)
Assistant Professor of Health and Physical Education
B.S., M.S., Arkansas State University
Ed.S., ABD, Middle Tennessee State University

Joseph S. White (2019)
Assistant Professor of Business and Economics
B.S., Birmingham-Southern College
M.S., Murray State University

Jeffrey A. Wilcox (2012)
Associate Professor of Religion
B.A., Calvin College
M.T.S., Calvin Theological Seminary
Ph.D., Marquette University

Kathryn Wilwohl (2013)
Professor of Biology
B.S., Saint Francis University
Ph.D., Temple University

Keliea A. Winstead (2018)
Assistant Professor of Biology
B.S., MSPA, Bethel University

Randell Wolff (2005)
Associate Professor of English
B.A., Bethel University
M.A., Murray State University

Faculty Emeriti

John J. Caterina (2000)
Professor of Biology
B.A., Saint Anselm College
Ph.D., University of Alabama at Birmingham

Howard L. Freeman (1979)
Professor of Biology
B.S., Fairleigh Dickinson University
M.A., University of Kansas
Ph.D., Rutgers University

Russell D. Holder (1989)
Associate Professor of Mathematics
B.S., M.A. Truman State University

J. Pratt Hubbard (1992)
Professor of Speech
B.A., LaGrange College
B.T.A., Pasadena Playhouse
M.F.A., Ed.D., University of Georgia

David H. Lankford (1967)
Associate Professor of Mathematics
B.S., Bethel University
M.S., University of Mississippi
Graduate Study, The University of Mississippi & The University of Tennessee

Shirley Martin (1970)
Registrar
B.S., Bethel University

Benjamin G. McClure (1989)
Professor of Education
B.S., Middle Tennessee State University
M.Ed., University of Georgia
Ed.D., George Peabody College for Teachers at Vanderbilt University

Linda Rains McClure (1989)
Professor of Education
B.S., Cumberland College
M.A., Union College;
Ed.D, The University of Tennessee

Maribeth McGuire (1985)
Associate Professor of English
B.A., Bethel University
M.A., The University of Memphis
Doctor of Letters, Bethel University

Cornelia A. Arnold Owen (1980)
Professor of Special Education
B.A., Bethel University
M.S.Ed., The University of Tennessee at Martin
Ed.D., Vanderbilt University

Kathleen B. Sacks (1979)
Associate Professor of Art
B.S., M.A.Ed., Bethel University
Graduate Studies, Memphis College of the Arts
The University of Memphis and The University of Tennessee at Martin

Athletic Training Program Faculty

L. Katie Delinsky, ATC, LAT (2015)
Instructor, Lab Coordinator
B.S.A.T., North Georgia College & State University
M.S. Lamar University

Dr. Nikki Holland, PT, ATC, LAT (2013)
Program Director
B.S., Murray State University
D.P.T., Belmont University

Stephanie Watkins, M.Ed. (2014)
Instructor, Academic & Admissions Coordinator
A.A.S., Paducah Community & Technical College
B.A., University of Tennessee-Martin
M.Ed., Bethel University

Department Of Nursing Faculty

Dayna Edwards (2009)
Associate Professor
A.S., Young Harris College
B.S.N., Medical College of Georgia
M.A., Tennessee Technological University

Ashley Johnson (2012)
Assistant Professor
B.S.N., University of Tennessee at Martin
M.S.N., Murray State University

Holly Kimbrell (2012)
Assistant Professor
B.S.N., University of Alabama Birmingham
M.S.N., D.N.P., University of Alabama Huntsville

Delecia Parker (2011)
Assistant Professor
A.A., A.S., Pensacola State College
B.S.N., M.S.N., Florida State University

Jenny Webb (2010)
Program Director, Associate Professor
B.S.N., University of Tennessee at Martin
M.S.N., Union University
PhD, University of Tennessee at Knoxville

— Nursing Program Adjunct Faculty —

Jason Hypes, BSN, RN, AEMT

Morgan Richard, BSN, RN

Angela Tippitt, MSN, APRN, FNP-BC

Twyla Torre, MSN, RN

Physician Assistant Program Faculty

J.R. Allison, M.D. (2011)

Medical Director, Assistant Professor

B.S., Memphis State University

M.D., University of Tennessee-Memphis

Daniel Patrick Brown, PA-C (2018)

Assistant Professor

B.S., Bethel University

M.S.P.A.S., Bethel University

Kate Cummings, PA-C (2013)

Assistant Professor

B.S., Bethel College

M.S.P.A.S., Bethel University

Joseph Hames, M.D. (1999)

Vice President/Academic Dean, Associate Professor

B.A., Furman University

M.D., University of South Carolina

Christy Lankford, PA-C (2015)

Assistant Professor

B.S.N., Bethel College

M.S.P.A.S., Bethel University

Cindy Laux, PA-C (2013)

Assistant Professor

M.S., Kansas State University

M.S.P.A.S., Bethel University

Tonya Hayes Nash, PA-C (2020)

Assistant Professor

B.S., Bethel College

M.S.P.A.S., Bethel College

Eugene Platt, PA-C (2017)

Assistant Professor

BS Mathematics University of Houston

MSPAS, Bethel College

Kelly Rawls, PA-C (2020)

Assistant Professor/Admissions Director

B.A. University of Mississippi

MSPAS Bethel University

Michael Trent Scates, PA-C (2014)

Program Director

B.S.P.A.S., Trevecca Nazarene University

B.S., University of Tennessee-Martin

M.S.R.P.C., Alderson-Broaddus College

Kerri Smith, PA-C (2011)

Interim Program Director

Academic Director

Assistant Professor

B.S., University of Southern Mississippi

M.S.P.A.S., Bethel College

Jeff Wilbert, PA-C (2013)

Assistant Professor

B.S., Bethel College

M.S.P.A.S., Bethel College

— PA Program Adjunct Faculty —

Thomas Alleva PA-C- PA adjunct

Cindy Argo CFNP - PA adjunct

Paul Brinkman, PA-C

John Nuss, PA-C

Debra Selby, M.D.

CPS Full-Time Faculty

George Ackerman (2017)
B.A., Florida Atlantic University
M.S.C.J., M.B.A., J.D., Nova Southeastern University
Ph.D., Capella University

Devon Anderson (2018)
B.A., Lipscomb University
M.A., Austin Peay University

Mary Jane Andrews (2011)
B.S., Delta State University
M.S., Mississippi State University

Danielle L Babb (2009)
B.S., University of California
M.B.A., University of Redlands
Ph.D., Capella University

Susan P Bailey (2008)
B.S., Bethel University
M.B.A., Bethel University
Ph.D., Northcentral University

Gerald R. Beavers (2017)
B.S., University of Louisville
M.S., University of Louisville

Dorothy Ann Black (2004)
B.S., Bethel College
M.B.A., Union University
Ph.D., Capella University

Rachel Blackwood (2017)
B.S., University of Minnesota
M.B.A., Capella University

James D. Blasick (1998)
B.S., Lambuth University
M.B.A. Sam Houston State Univ.
Ph.D., (ABD) University of Colorado

John Blumer (2017)
B.S., University of North Alabama
M.A., University of Montevallo
Ph.D., Middle Tennessee State University

Cynthia Bowker (2004)
B.A., Bethel University
J.D., University of Cincinnati College of Law

Joyce Brooks (2012)
B.A., University of South Carolina
M.S.Ed., Queens University School of Education
J.D., University of South Carolina School of Law
Ph.D., Capella University

Kathryn Broyles (2018)
B.A. Tennessee Technological University
M.A., Tennessee Technological University
M.Div. Duke Divinity School
Ph.D., Indiana University of Pennsylvania

Phyllis Campbell (1997)
B.A., Chatham University
M.B.A. University of South Florida
Ph.D., Capella University

Karen Cavaness (2017)
B.S., Middle Tennessee State University
M.S.Ed., University of Martin
M.B.A., Kaplan University
M.B.A., Kaplan University

Molly Coffman (2007)
B.A., Union University
M.S.ED., University of Martin
Ed.S., Union University
Ed.D., Union University

David Thompson Corley (2011)
B.S., Bethel University
J.D., Nashville School of Law

Full-Time & Adjunct Faculty

College of Professional Studies



Ronald Deming (1996)
B.S., Southern Illinois University
M.A., Webster University
Ph.D., Capella University

Sandi Deming (2017)
B.S., Bethel University
M.S. Capella University

Patricia Drown (2012)
B.S., California Baptist University
M.S., California Baptist University
Ph.D., Capella University

Robert Keith Eason (2017)
B.S., Texas Lutheran University
M.S., University of Phoenix

Raymond Keith Edwards (2018)
B.S., Jacksonville State University
M.A., Webster University
M.P.A., University of Alaska Southeast
Ph.D., Capella University

Gregory R Evans (2018)
B.S., Marquette University
M.A., American Public Military University
M.S., American Public Military University
Ph.D., University of Georgia

Ray Farris (2010)
B.S., Tennessee Tech University
J.D., Nashville School of Law

Jerry C Findley (2018)
B.S., Georgia College
M.A., National University
Ph.D., Capella University

Jeremy Francis (2012)
B.S., Park University
Master of Public Affairs, Park University
Ph.D., Walden University

Theresa Grisham (2013)
B.S., University of Martin
M.S., Bethel University

Linda Gunn (2012)
B.S., Indiana University
M.B.A., University of Notre Dame
Ph.D. The Union Institute

James K. Hampton (1998)
B.S., University of Martin
M.A., Murray State

William Harwood (2011)
B.A., American University
M.A., American University

Leslie Henegar (2014)
B.S., Bethel University
M.S., Strayer University

Melissa S Hickman (2015)
B.S., Shorter University
M.B.A., Kennesaw State University
Ph.D., Nova Southeastern University

Andy Holt (2012)
B.S., University of Tennessee Knoxville
M.B.A., UTM

Kenneth Holt (2008)
B.S., Union University
M.S., Louisiana State University and A & M College
Ph.D. University of Memphis

Donald Hornbuckle (2011)
B.S., Southern University and A & M College
M.A., Southern University and A & M College

Pamela Hornbuckle (2004)
B.S., Bethel University
M.B.A., Capella University

Kenneth C. Jones (2011)
B.S., Union University
M.A., American Military University
PhD (ABD), Capella University

Full-Time & Adjunct Faculty

College of Professional Studies



Michael J. Kane (2011)
A.B., Pfeiffer University
M.S., National University
Ph.D., Union Institute & University

Allison Keane (2012)
B.S., Bethel University
M.A., SUNY Binghamton New York

Caleb Kersey (2012)
B.S., Freed-Hardeman University
Ph.D., Tennessee State University

Kimberly LaFevor (2004)
A.S., John C Calhoun community College
B.S., Athens State College
Ph.D., Argosy University

Angelo Lamar (2011)
B.S., Bethel University
M.B.A., Bethel University
Ph.D., Walden University

Roderick Leupp (2017)
B.A., Northwest Nazarene College
M.A., Pacific School of Religion
M.A., University of Oklahoma
Ph.D., Drew University

Barry Michael (2017)
B.S., Bethel University
M.S.C.J., Bethel University

Carrie Miller (2012)
B.A., Edinboro University of Pennsylvania
M.A., Gannon University of Pennsylvania, Erie

Michael J. Miller (2012)
B.A., University of Central Florida
M.P.A., University of Central Florida
Ph.D., University of Central Florida

Diane Minger (2017)
B.S., Indiana State University
M.S., Texas Women's University
Ph.D., Texas Women's University

Mark Murtha (2016)
B.S., State University of New York College
M.S., Michigan State University

Nassar S. Nassar (2002)
B.S., Bethel University
M.B. A., University of Tennessee Martin
Ph.D., Capella University

Douglas Newson (2018)
B.A., Philander Smith College
M.B.A., Belhaven University
M.A., DeVry University

Joan Papes (2017)
B.S. Bethel University
M.S., Capella University
Ph.D., Capella University

John Petrov (2018)
B.S. Colorado Technical University
M.A., Briar Cliff University

Daniel Pigg (2009)
B.A., David Lipscomb University
M.A.R., Memphis Theological Seminary
M.A.Ed. Middle Tennessee State University
Ph.D., University of Tennessee

Michael Pittaro (2011)
B.S., Kutztown University
M.P.A., Kutztown University
Ph.D., Capella University

Jason Poore (2018)
B.S., University of Tennessee
M.S., University of Wisconsin

David Rausch (2011)
B.A., University of Louisville
M.S., University of Louisville

Paul Redden (2017)
B.A., Corcord University
MAcc, West Virginia University
M.B.A., West Virginia University

Full-Time & Adjunct Faculty

College of Professional Studies



Jacqueline Riddle (2018)
B.A., Rust College
M.B.A., Strayer University

Dan Ridley (2004)
B.S., UTM
M.S., University of Memphis
M.A., Bethel University

Jadrea Romines (2011)
B.S., Bethel University
M.B.A., Bethel University
Ph.D., Apollos University

Chris Rose (2017)
B.S., Florida International University
M.S., Nova Southeastern University
Ph.D., Nova Southeastern University

Robin Salyers (2003)
B.S., Bethel University
M.A., Bethel University
M.S., Touro University
Ph.D., Northcentral University

Tracy Sipma (2011)
B.S., University of Phoenix
M.B.A., Upper Iowa University
DB.A., Northcentral University

Anthony Skipper (2018)
B.S., Mississippi Valley State University
M.S., Mississippi Valley State University
Ph.D., Jackson State University

Mary Shea Slonaker (2009)
B.A., East TN State University
M.A., University of TN Knoxville
Ph.D., Middle TN State University

Anthony S. Smith (2005)
B.A., Jackson College of Music
M.A., Trevecca Nazarene University
EdD, Trevecca Nazarene University

Jeff Snodgrass (2018)
B.S., Eastern Kentucky University
M.A., East TN State University
Ph.D., Trident University Int'l

Magdalena Sokolowski (2012)
B.A., Ohio State University
M.A., Indiana University

Gail Southwell (2017)
B.S., Eastern Michigan University
M.A., Central Michigan University
Ph.D., Pacifica Graduate Institute

Bruce Steele (2012)
B.A., Chapman University
M.A., Golden Gate University
Ph.D., North Dakota State University

Dennis Trull (2003)
B.A., Memphis State University
M.Div., New Orleans Baptist Theological Seminary
Ph.D., New Orleans Baptist Theological Seminary

Helen Cynthia Tubb (2017)
B.A., University of TN
M.A., University of TN at Knoxville

Sila Tuju (2010)
B.A., Covenant College
M.B.A., University of TN at Chattanooga
Ph.D., Northcentral University

Lisa Tyler (2015)
B.S., Bethel University
M.B.A., Bethel University
Ph.D., Walden University

Edward (Butch) Lee Varner (2017)
B.S., Lee University
M.A., Pentecostal Theological Seminary
Ph.D., Pentecostal Theological Seminary

Patti Vinson (2012)
B.S., Bethel University
M.B.A., Union University

Full-Time & Adjunct Faculty

College of Professional Studies



Dale Michele Williams (2011)
B.S., Tennessee State University
M.A., Tennessee State University

Wendy Williams (2011)
B.S., Athens State University
M.S., Auburn University
Ed.D., Nova Southeastern University

Allen Patrick Willis (2010)
B.S., Bethel University
M.A., Liberty University

Regina (Gina) Willis (2007)
B.S., Bethel University
M.Ed., Bethel University
M.B.A., Bethel University
Ph.D., Walden University

CPS Adjunct Faculty

Shannon Adkins (2010)
B.A., Austin Peay State University
M.A.Ed., Tennessee State University
M.B.A., Bethel University

Renee Akers (2018)
B.S., Bethel University
M.B.A., Bethel University

Julie Alexander (2015)
B.S., University of Tennessee Martin
M.B.A., University of Tennessee Martin

Adelia Jane Amburgey (1998)
B.S., Bethel University
M.A.Ed., Tennessee State University
M.B.A., Bethel University

Charles Anderson (2016)
B.S., Bethel University
M.B.A., Bethel University

Angela Bailey-Mitchell (2016)
B.S., University of Tennessee Knoxville
M.B.A., Webster University

Lorey Basford (2015)
B.S., Bethel University
M.B.A., Bethel University

Mark Bell (2011)
B.S., Kaplan University
M.B.A., Bethel University
Ph.D., Regent University

Annetta Bevill (2003)
B.S., Bethel College
M.B.A., Bethel University

Keith Bevill (2009)
B.S., Bethel College
M.B.A., Bethel College

Vicky K. Black (2009)
B.S., Indiana University
M.S.M., Oakland City University
M.Ed., Wright State University
Ph.D., Ohio State University

Keith Bowery (2018)
B.S., King College
M.A., King College
D.B.A., Argosy University

Kevin Buchanan (2017)
B.S. Bethel University
M.B.A., Bethel University

Steven Cates (2017)
B.S., University of North Carolina
M.B.A., Northern Illinois University
D.B.A. Nova Southeastern University

Sabrina A. Chambers (2004)
B.S., Business Administration
M.A.Ed., Bethel University
M.A. East Tennessee State University
Ph.D., Higher Education Northcentral University

Melissa Cohen (2017)
B.S., University of Kentucky
M.B.A., University of Cincinnati
D.B.A. Walden University

Kelly Cronin (2012)
B.S., University of Akron
M.A., University of Akron
Ph.D., University of Akron

Full-Time & Adjunct Faculty

College of Professional Studies



Clay Cunningham (2015)
B.S., University of Tennessee Martin
M.S.C.J., Bethel University

Mark Cunningham (2013)
B.S., Bethel University
M.S.C.J., Bethel University

Rosa Dabbs (2012)
B.S., Bethel University
M.A., Bethel University

Chad Davis (2018)
B.S., Bethel University
M.S.C.J., Bethel University

Marcia Dickerson (2004)
B.A., Middle Tennessee State University
M.A., Middle Tennessee State University

John Erickson (2017)
B.A., University of Alaska Fairbanks
M.A., University of Alaska Fairbanks
M.S., Nova Southeastern University
J.D., Brigham Young University

Florence Ferguson (2012)
B.A., Mercy College of Detroit
M.A., University of Detroit
Ph.D., Michigan State University

Whitney Floyd (2016)
B.S., University of Phoenix
MA, University of Phoenix

Catherine Foster (2009)
B.S., Bethel College
M.B.A., Bethel College
Ph.D (ABD), Walden University

Greg Galfano (2013)
B.A., Western Kentucky University
M.A., Trevecca University,
M.A., Naval Postgraduate

Brett Gardner (2009)
B.S., Middle Tennessee State University
M.A., Trevecca University
Ed.D., Trevecca University

Kevin Genovese (2017)
B.S., Bethel University
MS, Bethel University

Keenan Gleeden (2018)
B.S., Park University
M.A., Webster University

Ernest Griffith (2010)
B.S., Austin Peay State University
J.D., Nashville School of Law

Becky Hames (2010)
B.S., Bethel University
M.A.Ed., Bethel University
Ph.D., Lakeland University

Bob Hicks (2004)
B.S., University of Tennessee Martin
M.S.A., University of Tennessee Martin

Johnny Hinds (2004)
B.S., Wayland Baptist University
M.A., Webster University

John Hitz (2006)
B.S., University of Maryland College Park
M.S.P.H. (Public Health), University of NC
Ph.D. (Public Health), University of North Carolina

Angela Hopper (2004)
B.S., Bethel University
M.Acc. University of Tennessee Martin

LaTara Hopson (2017)
B.S., Mid-Continent University
M.B.A. South University

Steve Isbell (2012)
B.S., Bethel University
MBA, Trident University International

Gina Jackson (2017)
B.S., Bethel University
MBA, Bethel University

Gregory Jeffers (2011)
B.A., Ohio State University
M.A., California State University

Corey Johnson (2015)
B.S., Jackson State University
M.S., Mississippi State University
Ed.D., Memphis State University

Full-Time & Adjunct Faculty

College of Professional Studies



Dia Junious (2014)
B.S., Northern Illinois
M.A. Ed., Governor's State University
M.A., University of Illinois

Daniel Keeton (2017)
B.S., Bethel University
M.S.C.J., Bethel University

Valerie King (2009)
B.S., Belmont University
M.B.A., Belmont University
D.B.A., Argosy University

Samuel Knolton (2011)
A.A.S., Hopkinsville Community College
B.S., Austin Peay State University
J.D., Nashville School of Law

Kuhn John Randy (2010)
B.S., University Central Florida
M.B.A. University of Pittsburgh
Ph.D., University of Central Florida

Shane Lauber (2018)
B.A., Eckerd College
M.S., Hodges University

Cynthia Laux (2018)
B.S., University of Tennessee Martin
M.S., Kansas State University
M.S., Bethel University

Brandi Lee (2012)
B.S., Bethel College
M.A.Ed., Bethel University

Kenneth Ben LeVan (2018)
B.A., College of Wooster
M.A., Rochester Institute of Technology
Ph.D., University of Texas

Bryan Lewis (2017)
B.S., Southern Christian University
M.A., Amridge University

Sandy Loudon (1999)
B.S., Murray State University
M.B.A., Bethel University
M.A.Ed., Bethel University

Tiffany McCutcheon (2010)
B.S., Murray State University
M.B.A., Bethel University
Ph.D., Walden University

Chad McDaniel (2016)
B.S., Bethel University
M.B.A., Bethel University

Andrew Michael (2019)
B.A., University of Massachusetts Lowell
M.A., Northeastern University
Ph.D., Northcentral University

Ted Mikell (2018)
B.S., Mississippi State University
M.B.A., Amberton University
M.A., University of Dallas
Ph.D., Nova Southeastern University

Alacia Mitchell (2018)
B.S., Bethel University
M.B.A., Lakeland College

Elana Mitchell (2018)
B.S., Bethel University
M.S.C.J., Bethel University

Brad Moore (2010)
B.S., Bethel University
M.B.A., Bethel University
M.A., Liberty University

Brittany Morgan (2019)
B.S., Murray State University
M.A., Murray State University

Timothy Nanney (2013)
B.S., Bethel University
M.S., Bethel University
J.D., Nashville School of Law

Fred Newell (2017)
B.A. Pfeiffer University
M.A., Bellevue University
M.S.C.J., American Public University
M.B.A., Pfeiffer University

Chad Newton (2018)
A.S., Monroe Community College
B.S., Roberts Wesleyan College
M.S., Nazareth College
Ph.D., Regent University

Full-Time & Adjunct Faculty

College of Professional Studies



Lisa Norris (2004)
B.S., Bethel College
M.A.Ed., Bethel College
Ed.D., Walden University

Jonathan (John) Norwood (2015)
B.S., Bethel University
M.A., American Public University
M.A., Capella University

Cassie Pence (2019)
B.S., Liberty University
M.S., Walden University

Rhonda Qualls (2017)
B.S., University of Arkansas
MBA, Bethel University

Kim Risby (2013)
B.S., East Carolina University
M.S., Cumberland University;
Ed.D., Trevecca Nazarene University

Janae Rodriguez (2015)
B.A., Fort Hays State University
M.A., Liberty University

Marcia M Rose (2018)
B.S., Nova Southeastern University
MA, Nova Southeastern University

Amanda Sanchoo (2017)
B.S., University of Central Florida
MS, University of Central Florida
DBA, Northcentral University

Grady David Sanford (2019)
B.S., Thomas University
M.A., Columbus University

Jon Seaborg (2011)
B.A., Illinois Wesleyan University
Juris Doctorate, Nashville School of Law

William (Bill) Shelton
B.A., Murray State University
M.A., Murray State University

Lisa Stephens (2018)
B.S., Bethel University
M.S.C.J., Bethel University

Alicia Stremming (2017)
BB.A., Austin Peay State University
M.S., Austin Peay State University

Hector Tato (2015) for CPS
B.A., Florida International
M.A., Universidad Simon Bolivar, Colombia
Ph.D., Universidad del Norte, Colombia

LaMerle Thomas (2015)
B.S., Upper Iowa University
M.A., Lakeland College

Reginald Tiller (2010)
B.S., Trevecca Nazarene University
M.A., Trevecca Nazarene University
Ph.D., Regent University

Keely Vaughan (2016)
B.S., University of Tennessee, Martin
M.S., Bethel University

Lisa K. Vaughn
B.S., Bethel College
M.A., Bethel College
M.B.A., Bethel University

Anne Wade (2018)
B.A., University of North Carolina
M.S., Andrew Jackson University
Ph.D., Western Carolina University

Alan Whiteman (2015)
B.A., Michigan State University
MB.A., Wayne State University
Ph.D., Walden University

Kelly Willhite (2019)
B.S., Liberty University
MEd, Liberty University

Tomecca Williams (2016)
B.S., Troy University
M.S., Troy University
Ph.D., Capella University

Lavonda Kay Wood (2017)
B.S., Bethel University
M.B.A., Bethel University

BU



Athletics

Athletic Activities

Intercollegiate Athletics

Intercollegiate Athletics have become an important and exciting aspect of life for the many students, alumni, and community friends of the University who support Bethel's teams. As members of the National Association of Intercollegiate Athletics (NAIA), the Wildcats and the Lady Wildcats regularly compete against many top-rated teams. The men's program has teams in basketball, baseball, bass fishing, bowling, cheer, cross-country, football, golf, in-line hockey, shooting, soccer, swimming, tennis, and track. The women's program has teams in basketball, bass fishing, bowling, cheer, cross country, golf, softball, soccer, shooting, swimming, tennis, track, and volleyball.

Intramural Athletics

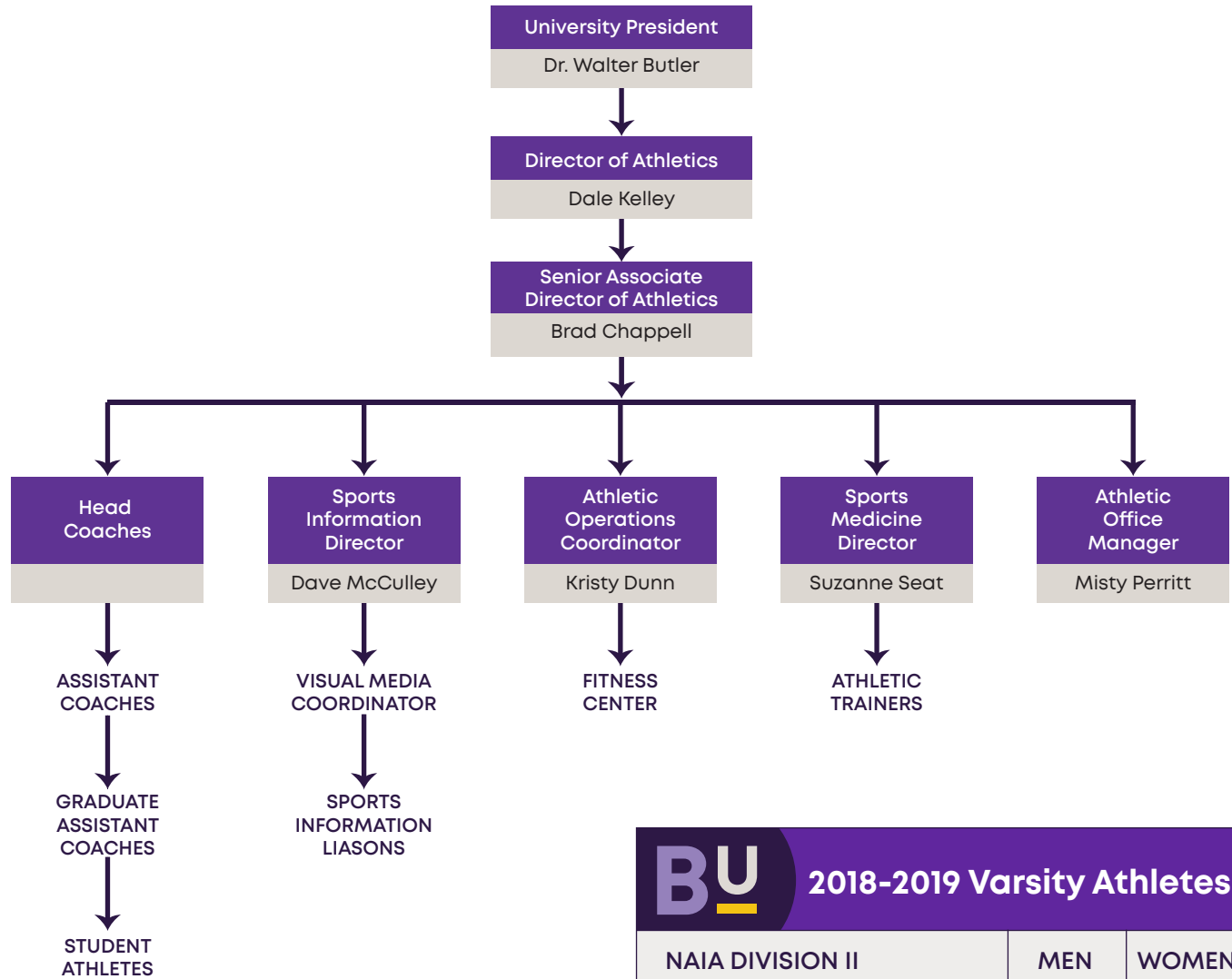
Intramural sports offer a variety of competition for the enjoyment of Bethel students, faculty, and staff. The program promotes enthusiasm, leadership, and good sportsmanship. The use of student directors, captains, coaches, and game officials creates a uniquely student-oriented program. Regulations for participation may be found in The Log.

Exercise and Fitness

Students are invited to exercise daily at the Wildcat Health and Fitness Complex, which features cardio and strength training equipment, and at the Gaines Indoor Pool.



Athletics Organizational Chart



All Bethel University sports teams support over 800 student athletes.

BU 2018-2019 Varsity Athletes

NAIA DIVISION II	MEN	WOMEN
All Track Combined	20	12
Baseball	27	-
Basketball	18	14
Bowling	11	12
Football	70	-
Golf	14	5
Soccer	41	22
Softball	-	21
Swimming	7	13
Tennis	7	8
Volleyball	-	16
Total Participants	201	123
Unduplicated Count	201	123

Administration

Athletics



Administration

Brad Chappell	Senior Associate Athletic Director
Kristy Dunn	Athletic Operations Coordinator
Cristy Holland	Student Insurance Coord
Dale Kelley	Director of Athletics
David McCulley	Sports Information Director
Zachary O'Kelley	Director of Wildcat Vision
Misty Perritt	Athletics Office Manager/NAIA Eligibility
Suzanne Seat	Sports Med Director
Ray Watkins	Fitness Center Manager

Trainers

Shelbi Cameron	Staff Athletic Trainer
William Essary	Staff Athletic Trainer
David Holsinger	Staff Athletic Trainer
Lacey Jones	Staff Athletic Trainer
Matthew Robinson	Staff Athletic Trainer

Coaches

Archery:

Kenny Loudon	Head Coach – Archery
--------------	----------------------

Baseball:

Rusty Thompson	Head Coach - Baseball
Nicolas Thompson	Assistant Coach - Baseball
Lee Whitaker	Assistant Coach - Baseball

Basketball:

Jeff Britt	Head Coach – Men's Basketball
Chris Nelson	Head Coach – Women's Basketball
Aaron Johnson	Assistant Coach – Men's Basketball
Meagan Price	Assistant Coach – Women's Basketball
Jonathan Stanley	Assistant Coach – Men's Basketball

Bass Fishing:

Garry Mason	Head Coach - Bass Fishing
Kenny Loudon	Assistant Coach – Bass Fishing

Bowling:

Clay Boyd	Head Coach - Bowling
-----------	----------------------

Cheer:

Leah Carr	Head Coach – Cheer
-----------	--------------------

Administration

Athletics



Cross Country/Track & Field:

Brandon Kilburn
Wes Bradshaw

Head Coach - Track & Cross Country
Assistant Coach - Track & Cross Country

Football:

Mike Jasper
Chris Springer
Kevin Wewers
Cody McCallister
Justin Brown
Richard Hutchings
Dustin Kincaid
Morgan Cruce
Brody Reeves
Dylan Benson
Eric Knight
Wes White

Head Coach
Assistant Head Coach/ Defensive Coordinator
Associate Head Coach/ Offensive Coordinator
Co-Special Teams Coordinator/ Defensive Backs
Co-Special Teams Coordinator/Wide Receivers
Run Game Coordinator/ Offensive Line
Director of Player Development/Linebackers
Director of Football Operations/ H-Backs and Tight Ends
Offensive Assistant/Running Backs
Defensive Assistant/Linebackers
Offensive Assistant/ Offensive Line
Defensive Assistant/ Defensive Line

Golf:

Larry Gerald

Head Coach - Golf

In-Line Hockey:

Ryne Potts

Head Coach – Inline Hockey

Soccer:

Misty Aird
Malang Jarju
Rene Njikang Enang
Tashana Taylor

Head Coach - Women's Soccer
Head Coach - Men's Soccer
Assistant Coach - Men's Soccer
Assistant Coach - Women's Soccer

Softball:

John Weeks
Ivey Kane

Head Coach - Softball
Assistant Coach - Softball

Shooting Sports:

Thomas Edwards

Coach Head - Shooting

Swimming:

Kayci Rezac

Head Coach - Swim

Tennis:

Derrick Hubble

Head Coach - Tennis

Volleyball:

Starla Cupples

Coach – Women's Volleyball

Intercollegiate Awards & Recognitions 2019-20

Year in Review*

28 named All-Conference Player of the Week

80 named various academic All-Conference

38 named All-Conference squads

4 named all scholar teams

10 All-American teams

1 coach of the year

1 student-named player of the year in their respective sport

*As a result of COVID-19, Bethel, like other schools across the nation, saw their spring sports seasons suspended the week of March 16 and canceled in early April. The fall championships in basketball were also canceled. The No. 6 ranked Bethel women's basketball team was preparing to participate in their 11th national championship. The Lady Cats were riding a 21-game winning streak and were 29-4 on the season. Bethel's men's and women's tennis squads were off to their best start in ten years. The Lady Cat softball team was off to their best start in over a decade at 12-2. In addition, the Bass team was having another record-setting season.



Source: BU Sports Information Department

BU



Financial Aid

Financial Aid Overview

Total grant aid received by all undergraduate students \$30,732,380
 Number of undergraduate students who received a Pell Grant2,371
 Percentage of First Time - Full Time (FTFT) students receiving any financial aid100%

FTFT Students Receiving Grant Aid by Type

	Percent of FTFT students receiving grant	Average amount of grant aid received
Total	98%	\$15,302
Federal Government	62%	\$5,300
Pell	62%	\$5,048
Other Federal	34%	\$459
State/Local Government	60%	\$5,056
Institutional	87%	\$10,047

FTFT Students Receiving Loans by Type

	Percentage of FTFT students receiving loans	Average amount of loans received
Total	76%	\$5,548
Federal	76%	\$5,341
Non-federal	2%	\$7,185

Average net price for FTFT students who receive grant aid \$15,649

Average net price for FTFT students who receive Title IV federal student aid

\$0 – 30,000 \$14,339
 \$30,001 – 48,000 \$13,225
 \$48,001 – 75,000 \$19,206
 \$75,001 – 110,000 \$18,643
 \$110,001 and more \$18,446

Military Servicemembers and Veteran's Benefits

	Number of students receiving benefits/assistance	Total dollar amount of benefits/assistance awarded through the institution
Post-9/11 GI Bill Benefits		
Undergraduate students	240	\$1,098,023
Graduate students	48	\$260,494
Total	288	\$1,358,517
Department of Defense Tuition Assistance Program		
Undergraduate students	42	\$117,629
Graduate students	11	\$28,688
Total	53	\$146,317

Resource: National Center for Education Statistics (NCES), IPEDS 2018-2019

Average Student Loan Debt

Bethel University's average student loan debt for graduating undergraduate students is higher than the national loan debt and higher than the Tennessee student debt. The state loan debt averages are based on Public and Private Not-for-Profit schools. Public schools have a considerable lower tuition costs than Private Not-for-Profit schools causing the average loan debt to be naturally lower than Private schools. Bethel continuously strives to advise students to keep their loan debt as low as possible. Due to the low-income area where Bethel is located, students have to borrow to help cover daily living expenses outside of school that parents do not have the income to provide, causing the slightly higher average loan debt for our students.

Average Undergraduate Student Loan Debt Per Student Who Borrowed Federal and Private Student Loans and Graduated			
Academic Year	Bethel University Average	Tennessee Undergrad Average	National Undergrad Average
2014-15	\$31,852	\$26,083	\$30,100
2015-16	\$32,074	\$26,981	\$28,350
2016-17	\$31,262	\$25,252	\$28,650
2017-18	\$30,132	\$26,838	\$29,200
2018-19	n/a	n/a	n/a

Student Loan Default Rates & Aggregate Indebtedness

Rationale: Student loan default rates are considered in determining an institution's eligibility to participate in Title IV federal student loans programs. The target default rate was selected to maintain Bethel's status with the U.S. Department of Education. The aggregate student loan indebtedness is important to the institution because of the mission of the institution and the potential correlation between the level of debt and default.

Bethel employs an outside entity to assist them in keeping the default rate low. After a 1.3% rise in 2014, Bethel's default rate dropped 1.7% in 2015, and then another .9% in 2016 (draft). Our outside entity is working diligently to continue this downward trend.

Cohort Default Rates Compared to the National Student Loan Default Rates					
Cohort Fiscal Year	Rate Type	Numerator*	Denominator^	Bethel Student Loan Default Rates	National Student Loan Default Rates
2017	3-yr DRAFT	287	2477	11.5%	n/a
2016	3-yr OFFICIAL	278	2466	11.2%	10.1%
2015	3-yr OFFICIAL	355	29.07	12.2%	10.8%
2014	3-yr OFFICIAL	367	2633	13.9	11.5%

Resources: National Center for Education Statistics (NCES), IPEDS 2018-2019 College Scorecard from the US DOE (GRAD_DEBT_MDN)

Average Net Price For Full-Time Beginning Students

Full-time beginning undergraduate students who were awarded grant or scholarship aid from federal, state or local governments, or the institution.

Academic Year	2016-2017	2017-2018	2018-19
Average net price	\$14,382	\$15,018	\$15,649

Full-time beginning undergraduate students who were awarded Title IV aid by income.

Average Net Price by Income	2016-2017	2017-2018	2018-19
\$0 – \$30,000	\$13,070	\$14,932	\$14,339
\$30,001 – \$48,000	\$13,226	\$15,131	\$13,225
\$48,001 – \$75,000	\$14,798	\$17,282	\$19,206
\$75,001 – \$110,000	\$16,745	\$18,134	\$18,643
\$110,001 and more	\$17,287	\$18,233	\$18,446

- Average net price is generated by subtracting the average amount of federal, state/local government, or institutional grant or scholarship aid from the total cost of attendance. Total cost of attendance is the sum of published tuition and required fees, books and supplies, and the weighted average for room and board and other expenses.
- Beginning students are those who are entering postsecondary education for the first time.
- Title IV aid to students includes grant aid, work study aid, and loan aid. These include: Federal Pell Grant, Federal Supplemental Educational Opportunity Grant (FSEOG), Academic Competitiveness Grant (ACG), National Science and Mathematics Access to Retain Talent Grant (National SMART Grant), Teacher Education Assistance for College and Higher Education (TEACH) Grant, Federal Work-Study, Federal Perkins Loan, Subsidized Direct or FFEL Stafford Loan, and Unsubsidized Direct or FFEL Stafford Loan. For those Title IV recipients, net price is reported by income category and includes students who received federal aid even if none of that aid was provided in the form of grants. While Title IV status defines the cohort of student for which the data are reported, the definition of net price remains the same – total cost of attendance minus grant aid.

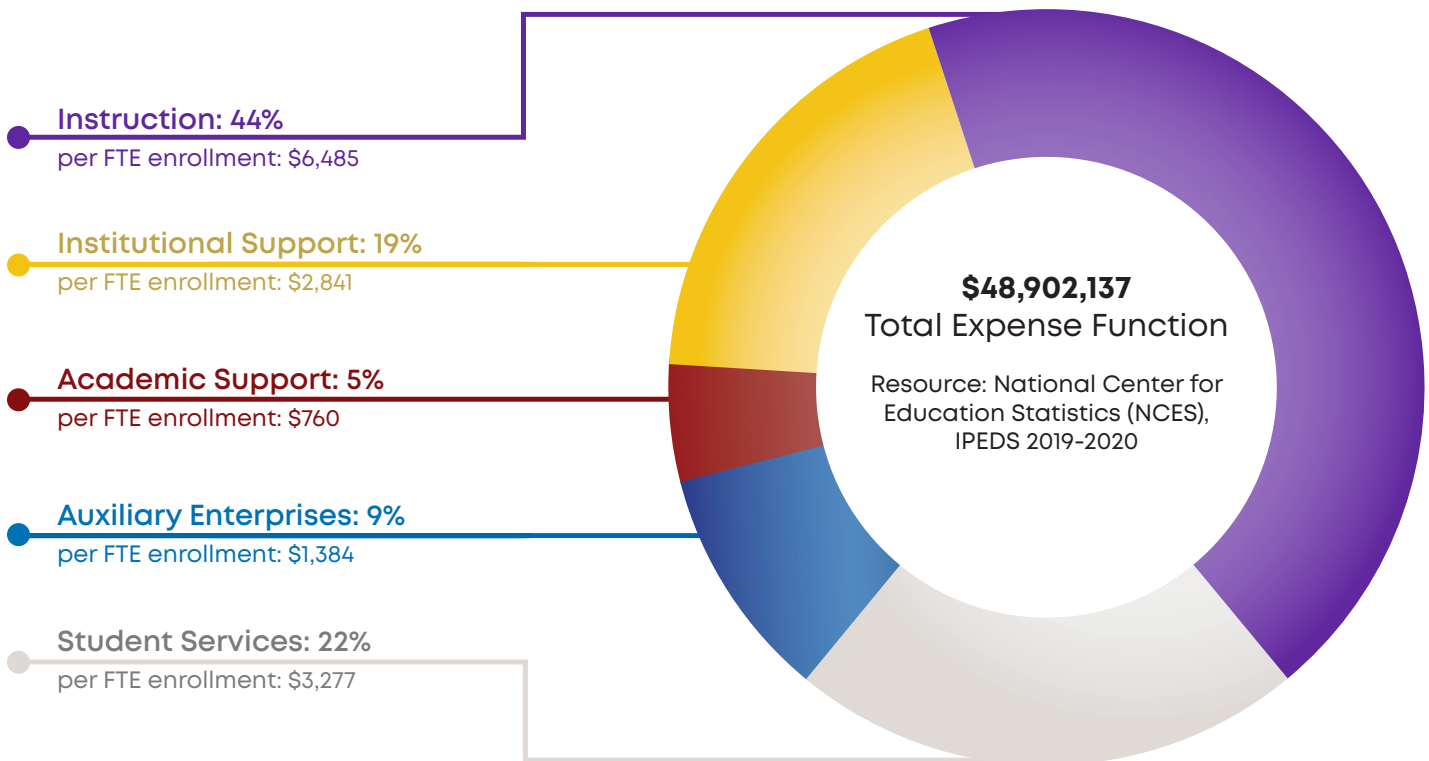
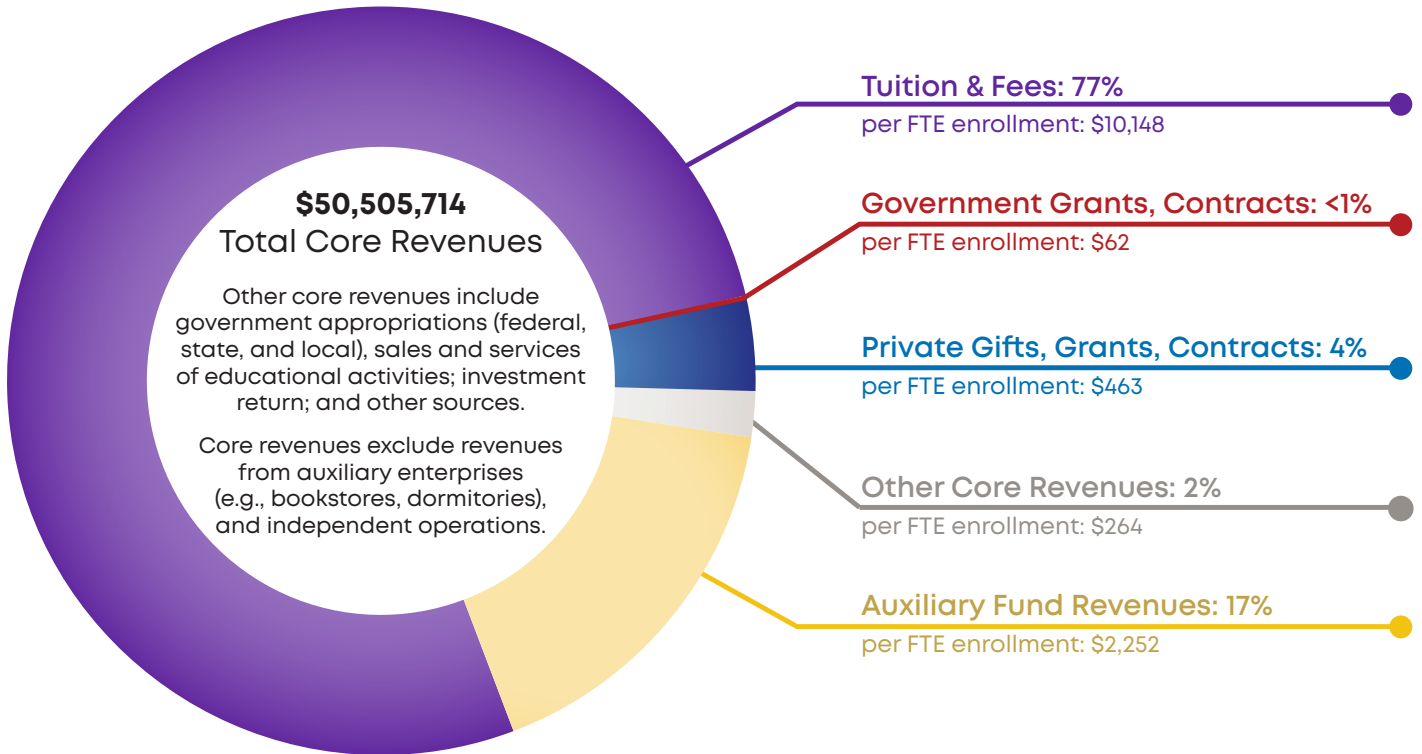
Resource: National Center for Education Statistics (NCES), IPEDS 2018-2019

BU



Revenues & Expenditures

2019-20 Sources of Revenue & Expenditures



Salary Outlays for Full-time Non-instructional Staff: 2019-20

Occupational category	Number of full-time staff	Total annual salary outlays
Library and Student and Academic Affairs and Other Education Services Occupations	17	\$666,514
Management Occupations	38	\$ 2,891,908
Business and Financial Operations Occupations	22	\$931,020
Computer, Engineering, and Science Occupations	7	\$262,535
Community, Social Service, Legal, Arts, Design, Entertainment, Sports, and Media Occupations	94	\$3,705,146
Healthcare Practitioners and Technical Occupations	6	\$216,984
Service Occupations	31	\$644,660
Sales and Related Occupations	0	\$0
Office and Administrative Support Occupations	49	\$1,561,451
Natural Resources, Construction, and Maintenance Occupations	6	\$170,512

Salary Outlays for Full-time Instructional Staff: 2019-20

Gender and Academic Rank	Total Staff for Salary Reporting	Annual Average Salaries
Men and Women		
Professors	15	\$62,985
Associate professors	17	\$49,210
Assistant professors	16	\$54,174
Instructors	3	\$41,333
Lecturers	38	\$20,829
No academic rank	0	\$0
Total men	89	\$40,041
Women		
Professors	8	\$54,782
Associate professors	14	\$47,666
Assistant professors	14	\$55,703
Instructors	6	\$39,377
Lecturers	29	\$22,638
No academic rank	0	\$0
Total women	71	\$39,129
Total (men + women)	160	\$39,636

Resource: National Center for Education Statistics (NCES)

Number of Staff by Employment Status & Occupational Category: Fall 2019

Note: Full-time equivalent (FTE) staff is calculated by summing the total number of full-time staff and adding one-third of the total number of part-time staff. Graduate assistants are not included in the above figures. Many of the FTE figures may be included in the DFR. *Resource: National Center for Education Statistics (NCES)*

Occupational Category	Full-time staff	Part-time Staff	FTE Staff
Primarily Instructional Staff	160	129	203
Exclusively Credit	160	129	203
Exclusively Not-for-Credit	0	0	0
Combined Credit/Not-for-Credit	0	0	0
Library and Student and Academic Affairs and Other Education Services Occupations	17	27	26
Research Staff	0	0	0
Curators, Archivists, and Museum Technicians SOC 25-4010	0	0	0
Librarians and Media Collections Specialists SOC 25-4020	3	1	3
Library Technicians SOC 25-4030	2	3	3
Student and Academic Affairs and Other Education Services Occupations SOC 25-2000 + 25-3000 + 25-9000	12	23	20
Non-Instructional Staff	253		
Management Occupations SOC 11-0000	38	1	38
Business and Financial Operations Occupations SOC 13-0000	22	1	22
Computer, Engineering, and Science Occupations SOC 15-0000 + 17-0000 + 19-0000	7	1	7
Community, Social Service, Legal, Arts, Design, Entertainment, Sports, and Media Occupations SOC 21-0000 + 23-0000 + 27-0000	94	2	95
Healthcare Practitioners & Technical Occupations SOC 29-0000	6	0	6
Service Occupations SOC 31-0000 + 33-0000 + 35-0000 + 37-0000 + 39-0000	31	67	53
Sales and Related Occupations SOC 41-0000	0	0	0
Office and Administrative Support Occupations SOC 43-0000	49	3	50
Natural Resources, Construction, and Maintenance Occupations SOC 45-0000 + 47-0000 + 49-0000	6	0	6
Production, Transportation, and Material Moving Occupations SOC 51- 0000 + 53-0000	0	0	0
Graduate Assistants (non-teaching)		17*	
Total	430	248	507*

*Graduate Assistants not included in FTE Staff total

BU



Bethel University was named the **2020 Safest College in the State of Tennessee** by an independent agency, Your Local Security. Their data was provided from the United States Department of Education's Campus Safety and Security Analysis and the FBI's Uniform Crime Report.

Crime Statistics

Crime Statistics: McKenzie Campus

325 Cherry Avenue, McKenzie, TN 38201

INCIDENT TYPE	ON CAMPUS			RESIDENCE HALLS			OFF CAMPUS			PUBLIC PROPERTY		
	2016	2017	2018	2016	2017	2018	2016	2017	2018	2016	2017	2018
Murder/Non-Negligent Manslaughter	0	0	0	0	0	0	0	0	0	0	0	0
Negligent Manslaughter	0	0	0	0	0	0	0	0	0	0	0	0
Rape	3	0	1	3	0	0	0	0	0	0	0	0
Fondling	1	0	0	1	0	0	0	0	0	0	0	0
Incest	0	0	0	0	0	0	0	0	0	0	0	0
Statutory Rape	0	0	0	0	0	0	0	0	0	0	0	0
Domestic Violence	0	0	1	0	0	1	0	0	0	0	0	0
Dating Violence	3	1	0	2	1	0	0	0	0	0	0	0
Stalking	1	3	2	0	0	1	0	0	0	0	0	0
Robbery	0	0	0	0	0	0	0	0	0	0	0	0
Burglary	3	10	4	1	9	2	0	0	0	0	0	0
Aggravated Assault	0	0	0	0	0	0	0	0	0	0	0	0
Motor Vehicle Theft	0	0	0	0	0	0	0	0	0	0	0	0
Arson	0	0	0	0	0	0	0	0	0	0	0	0
Total:	10	14	8	7	10	4	0	0	0	0	0	0

ARRESTS AND REFERRALS FOR DISCIPLINARY ACTION												
Arrest for Alcohol	0	1	0	0	0	0	0	0	0	0	0	0
Discipline for Alcohol	8	10	11	8	9	10	1	0	0	0	0	0
Arrest for Drugs	0	1	0	0	1	0	0	0	0	0	0	0
Discipline for Drugs	3	1	12	3	1	12	0	0	0	0	0	0
Arrest for Weapons	0	0	0	0	0	0	0	0	0	0	0	0
Discipline for Weapons	2	1	2	0	1	1	0	0	0	0	0	1
Total:	13	14	25	11	12	23	1	0	0	0	0	1

There were no reported Hate Crimes or unfounded crimes for this campus.

Source: Bethel University Annual Security and Fire Safety Report

Crime Statistics: Paris Campus

302 B Tyson Avenue, Paris, TN 38242

INCIDENT TYPE	ON CAMPUS			RESIDENCE HALLS			OFF CAMPUS			PUBLIC PROPERTY		
	2016	2017	2018	2016	2017	2018	2016	2017	2018	2016	2017	2018
Murder/Non-Negligent Manslaughter	0	0	0	0	0	0	0	0	0	0	0	0
Negligent Manslaughter	0	0	0	0	0	0	0	0	0	0	0	0
Rape	0	0	0	0	0	0	0	0	0	0	0	0
Fondling	0	0	0	0	0	0	0	0	0	0	0	0
Incest	0	0	0	0	0	0	0	0	0	0	0	0
Statutory Rape	0	0	0	0	0	0	0	0	0	0	0	0
Domestic Violence	0	0	0	0	0	0	0	0	0	0	0	0
Dating Violence	0	0	0	0	0	0	0	0	0	0	0	0
Stalking	0	0	0	0	0	0	0	0	0	0	0	0
Robbery	0	0	0	0	0	0	0	0	0	0	0	0
Burglary	0	0	0	0	0	0	0	0	0	0	0	0
Aggravated Assault	0	0	0	0	0	0	0	0	0	0	0	0
Motor Vehicle Theft	0	0	0	0	0	0	0	0	0	0	0	0
Arson	0	0	0	0	0	0	0	0	0	0	0	0
Total:	0	0	0	0	0	0	0	0	0	0	0	0

ARRESTS AND REFERRALS FOR DISCIPLINARY ACTION												
Arrest for Alcohol	0	0	0	0	0	0	0	0	0	0	0	0
Discipline for Alcohol	0	0	0	0	0	0	0	0	0	0	0	0
Arrest for Drugs	0	0	0	0	0	0	0	0	0	1	0	0
Discipline for Drugs	0	0	0	0	0	0	0	0	0	0	0	0
Arrest for Weapons	0	0	0	0	0	0	0	0	0	0	0	0
Discipline for Weapons	0	0	0	0	0	0	0	0	0	0	0	0
Total:	0	0	0	0	0	0	0	0	0	1	0	0

There were no reported Hate Crimes or unfounded crimes for this campus.

Source: Bethel University Annual Security and Fire Safety Report

Crime Statistics: Chattanooga Campus

200 W. Martin Luther King Blvd. Suite 1032 Chattanooga, TN 37402

INCIDENT TYPE	ON CAMPUS			RESIDENCE HALLS			OFF CAMPUS			PUBLIC PROPERTY		
	2016	2017	2018	2016	2017	2018	2016	2017	2018	2016	2017	2018
Murder/Non-Negligent Manslaughter	0	0	0	0	0	0	0	0	0	0	0	0
Negligent Manslaughter	0	0	0	0	0	0	0	0	0	0	0	0
Rape	0	0	0	0	0	0	0	0	0	0	0	0
Fondling	0	0	0	0	0	0	0	0	0	0	0	0
Incest	0	0	0	0	0	0	0	0	0	0	0	0
Statutory Rape	0	0	0	0	0	0	0	0	0	0	0	0
Domestic Violence	0	0	0	0	0	0	0	0	0	0	0	0
Dating Violence	0	0	0	0	0	0	0	0	0	0	0	0
Stalking	0	0	0	0	0	0	0	0	0	0	0	0
Robbery	0	0	0	0	0	0	0	0	0	0	0	0
Burglary	0	0	0	0	0	0	0	0	0	0	0	0
Aggravated Assault	0	0	0	0	0	0	0	0	0	0	0	0
Motor Vehicle Theft	0	0	0	0	0	0	0	0	0	0	0	0
Arson	0	0	0	0	0	0	0	0	0	0	0	0
Total:	0	0	0	0	0	0	0	0	0	0	0	0

ARRESTS AND REFERRALS FOR DISCIPLINARY ACTION												
Arrest for Alcohol	0	0	0	0	0	0	0	0	0	0	0	0
Discipline for Alcohol	0	0	0	0	0	0	0	0	0	0	0	0
Arrest for Drugs	0	0	0	0	0	0	0	0	0	0	0	0
Discipline for Drugs	0	0	0	0	0	0	0	0	0	0	0	0
Arrest for Weapons	0	0	0	0	0	0	0	0	0	0	0	0
Discipline for Weapons	0	0	0	0	0	0	0	0	0	0	0	0
Total:	0	0	0	0	0	0	0	0	0	0	0	0

There were no reported Hate Crimes or unfounded crimes for this campus.

This campus has ceased operation.

Source: Bethel University Annual Security and Fire Safety Report

Crime Statistics: Clarksville Campus

2200A Wilma Rudolph Blvd. Clarksville, TN 37040

INCIDENT TYPE	ON CAMPUS			RESIDENCE HALLS			OFF CAMPUS			PUBLIC PROPERTY		
	2016	2017	2018	2016	2017	2018	2016	2017	2018	2016	2017	2018
Murder/Non-Negligent Manslaughter	0	0	0	0	0	0	0	0	0	0	0	0
Negligent Manslaughter	0	0	0	0	0	0	0	0	0	0	0	0
Rape	0	0	0	0	0	0	0	0	0	0	0	0
Fondling	0	0	0	0	0	0	0	0	0	0	0	0
Incest	0	0	0	0	0	0	0	0	0	0	0	0
Statutory Rape	0	0	0	0	0	0	0	0	0	0	0	0
Domestic Violence	0	0	0	0	0	0	0	0	0	0	0	0
Dating Violence	0	0	0	0	0	0	0	0	0	0	0	0
Stalking	0	0	0	0	0	0	0	0	0	0	0	0
Robbery	0	0	0	0	0	0	0	0	0	0	0	0
Burglary	0	0	0	0	0	0	0	0	0	0	0	0
Aggravated Assault	0	0	0	0	0	0	0	0	0	0	0	0
Motor Vehicle Theft	0	0	0	0	0	0	0	0	0	0	0	0
Arson	0	0	0	0	0	0	0	0	0	0	0	0
Total:	0	0	0	0	0	0	0	0	0	0	0	0

ARRESTS AND REFERRALS FOR DISCIPLINARY ACTION												
Arrest for Alcohol	0	0	0	0	0	0	0	0	0	0	0	0
Discipline for Alcohol	0	0	0	0	0	0	0	0	0	0	0	0
Arrest for Drugs	0	0	0	0	0	0	0	0	0	0	0	0
Discipline for Drugs	0	0	0	0	0	0	0	0	0	0	0	0
Arrest for Weapons	0	0	0	0	0	0	0	0	0	0	0	0
Discipline for Weapons	0	0	0	0	0	0	0	0	0	0	0	0
Total:	0	0	0	0	0	0	0	0	0	0	0	0

There were no reported Hate Crimes or unfounded crimes for this campus.

Source: Bethel University Annual Security and Fire Safety Report

Crime Statistics: Jackson Campus

33 / 51 / 59 Murray Guard Drive Jackson, TN 38305

INCIDENT TYPE	ON CAMPUS			RESIDENCE HALLS			OFF CAMPUS			PUBLIC PROPERTY		
	2016	2017	2018	2016	2017	2018	2016	2017	2018	2016	2017	2018
Murder/Non-Negligent Manslaughter	0	0	0	0	0	0	0	0	0	0	0	0
Negligent Manslaughter	0	0	0	0	0	0	0	0	0	0	0	0
Rape	0	0	0	0	0	0	0	0	0	0	0	0
Fondling	0	0	0	0	0	0	0	0	0	0	0	0
Incest	0	0	0	0	0	0	0	0	0	0	0	0
Statutory Rape	0	0	0	0	0	0	0	0	0	0	0	0
Domestic Violence	0	0	0	0	0	0	0	0	0	0	0	0
Dating Violence	0	0	0	0	0	0	0	0	0	0	0	0
Stalking	0	0	0	0	0	0	0	0	0	0	0	0
Robbery	0	0	0	0	0	0	0	0	0	0	0	0
Burglary	0	0	0	0	0	0	0	0	0	0	0	0
Aggravated Assault	0	0	0	0	0	0	0	0	0	0	0	0
Motor Vehicle Theft	1	0	0	0	0	0	0	0	0	0	0	0
Arson	0	0	0	0	0	0	0	0	0	0	0	0
Total:	1	0	0	0	0	0	0	0	0	0	0	0

ARRESTS AND REFERRALS FOR DISCIPLINARY ACTION												
Arrest for Alcohol	0	0	0	0	0	0	0	0	0	0	0	0
Discipline for Alcohol	0	0	0	0	0	0	0	0	0	0	0	0
Arrest for Drugs	0	0	0	0	0	0	0	0	0	0	01	0
Discipline for Drugs	0	0	0	0	0	0	0	0	0	0	0	0
Arrest for Weapons	0	0	0	0	0	0	0	0	0	0	0	0
Discipline for Weapons	0	0	0	0	0	0	0	0	0	0	0	0
Total:	0	0	0	0	0	0	0	0	0	0	0	0

There were no reported Hate Crimes or unfounded crimes for this campus.

Source: Bethel University Annual Security and Fire Safety Report

Crime Statistics: Memphis Campus

5885 Ridgeway Center Parkway Suite 100 Memphis, TN 38120

INCIDENT TYPE	ON CAMPUS			RESIDENCE HALLS			OFF CAMPUS			PUBLIC PROPERTY		
	2016	2017	2018	2016	2017	2018	2016	2017	2018	2016	2017	2018
Murder/Non-Negligent Manslaughter	0	0	0	0	0	0	0	0	0	0	0	0
Negligent Manslaughter	0	0	0	0	0	0	0	0	0	0	0	0
Rape	0	0	0	0	0	0	0	0	0	0	0	0
Fondling	0	0	0	0	0	0	0	0	0	0	0	0
Incest	0	0	0	0	0	0	0	0	0	0	0	0
Statutory Rape	0	0	0	0	0	0	0	0	0	0	0	0
Domestic Violence	0	0	0	0	0	0	0	0	0	0	0	0
Dating Violence	0	0	0	0	0	0	0	0	0	0	0	0
Stalking	0	0	0	0	0	0	0	0	0	0	0	0
Robbery	0	0	0	0	0	0	0	0	0	0	0	0
Burglary	1	0	0	0	0	0	0	0	0	0	0	0
Aggravated Assault	0	0	0	0	0	0	0	0	0	0	0	0
Motor Vehicle Theft	0	0	0	0	0	0	0	0	0	0	0	0
Arson	0	0	0	0	0	0	0	0	0	0	0	0
Total:	1	0	0	0	0	0	0	0	0	0	0	0

ARRESTS AND REFERRALS FOR DISCIPLINARY ACTION												
Arrest for Alcohol	0	0	0	0	0	0	0	0	0	0	0	0
Discipline for Alcohol	0	0	0	0	0	0	0	0	0	0	0	0
Arrest for Drugs	0	0	0	0	0	0	0	0	0	0	01	0
Discipline for Drugs	0	0	0	0	0	0	0	0	0	0	0	0
Arrest for Weapons	0	0	0	0	0	0	0	0	0	0	0	0
Discipline for Weapons	0	0	0	0	0	0	0	0	0	0	0	0
Total:	0	0	0	0	0	0	0	0	0	0	0	0

There were no reported Hate Crimes or unfounded crimes for this campus.

On June 30, 2019, this campus location ceased operation and was relocated to the campus of the Memphis Theological Seminary. The included crime information applies only to the 5885 Ridgeway Center Parkway location.

Source: Bethel University Annual Security and Fire Safety Report

Crime Statistics: Nashville Campus

1801 West End Avenue Suite 200 Nashville, TN 37203

INCIDENT TYPE	ON CAMPUS			RESIDENCE HALLS			OFF CAMPUS			PUBLIC PROPERTY		
	2016	2017	2018	2016	2017	2018	2016	2017	2018	2016	2017	2018
Murder/Non-Negligent Manslaughter	0	0	0	0	0	0	0	0	0	0	0	0
Negligent Manslaughter	0	0	0	0	0	0	0	0	0	0	0	0
Rape	0	0	0	0	0	0	0	0	0	0	0	0
Fondling	0	0	0	0	0	0	0	0	0	0	0	0
Incest	0	0	0	0	0	0	0	0	0	0	0	0
Statutory Rape	0	0	0	0	0	0	0	0	0	0	0	0
Domestic Violence	0	0	0	0	0	0	0	0	0	0	0	0
Dating Violence	0	0	0	0	0	0	0	0	0	0	0	0
Stalking	0	0	0	0	0	0	0	0	0	0	0	0
Robbery	0	0	0	0	0	0	0	0	0	0	0	0
Burglary	0	0	0	0	0	0	0	0	0	0	0	0
Aggravated Assault	0	0	0	0	0	0	0	0	0	0	0	0
Motor Vehicle Theft	0	0	0	0	0	0	0	0	0	0	0	0
Arson	0	0	0	0	0	0	0	0	0	0	0	0
Total:	0	0	0	0	0	0	0	0	0	0	0	0

ARRESTS AND REFERRALS FOR DISCIPLINARY ACTION												
Arrest for Alcohol	0	0	0	0	0	0	0	0	0	0	0	0
Discipline for Alcohol	0	0	0	0	0	0	0	0	0	0	0	0
Arrest for Drugs	0	0	0	0	0	0	0	0	0	0	01	0
Discipline for Drugs	0	0	0	0	0	0	0	0	0	0	0	0
Arrest for Weapons	0	0	0	0	0	0	0	0	0	0	0	0
Discipline for Weapons	0	0	0	0	0	0	0	0	0	0	0	0
Total:	0	0	0	0	0	0	0	0	0	0	0	0

There were no reported Hate Crimes or unfounded crimes for this campus.

On October 1, 2019, this campus location ceased operation and moved as administrative offices only to 818 18th Ave. S., 10th floor, Nashville, TN 37203. The included crime information applies only to the 1801 West End Avenue location.

Source: Bethel University Annual Security and Fire Safety Report

BU



Graduation

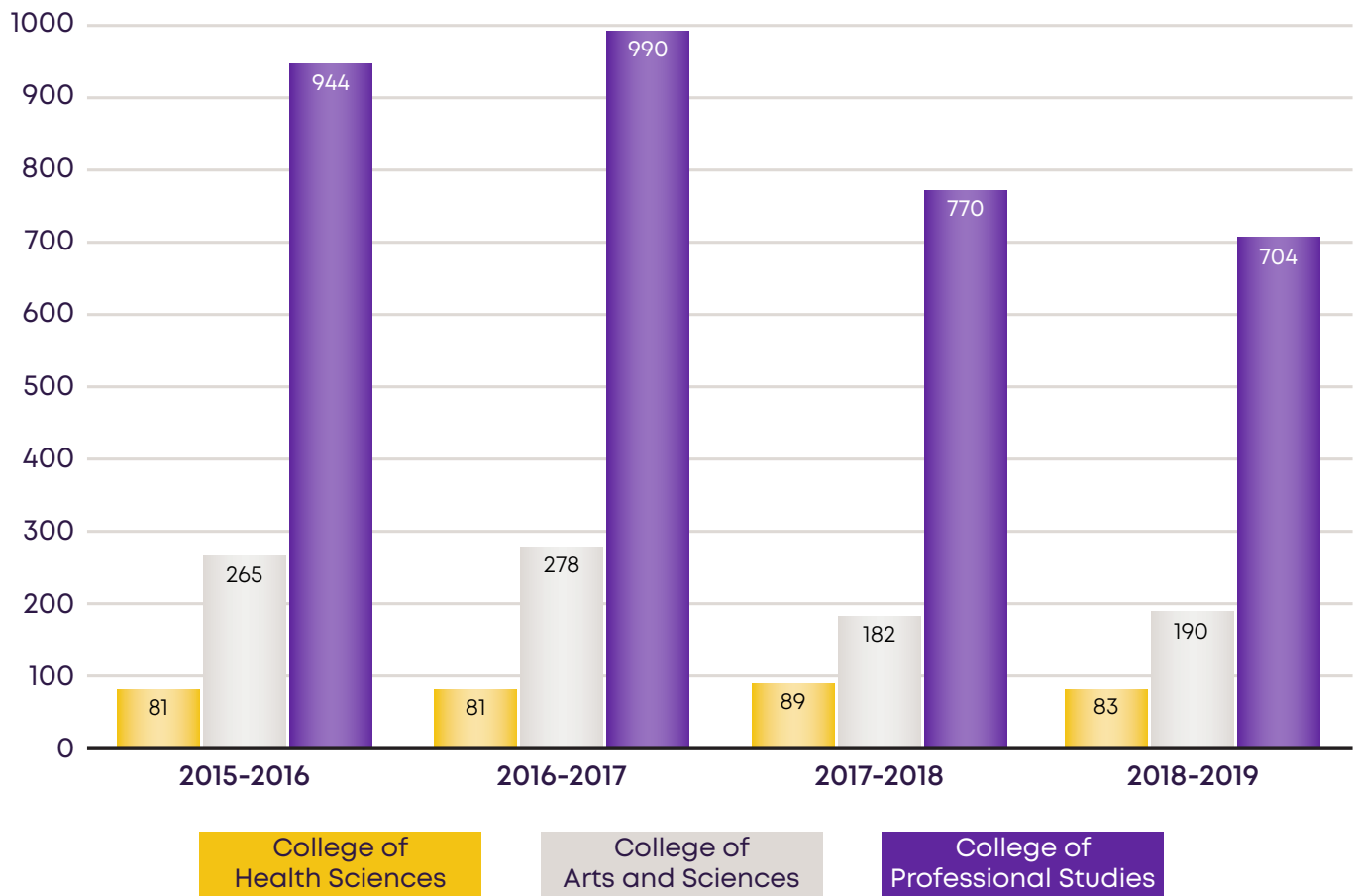
Graduates by College

As demonstrated on the graphs below, the number of graduates each year in our non-traditional programs in the College of Professional Studies far exceed the number of students in our traditional programs who make up the majority of first-time freshman.

In 2015 the College of Criminal Justice was combined with the College of Professional Studies. In 2017 the School of Education was combined with the College of Arts and Sciences. These totals have been combined to accurately compare data with the current year.

The 2018-2019 year has not been completed as of the date of this publication. It will be reported in the 2018-2019 Fact Book.

4-Year Comparison of Graduates by College



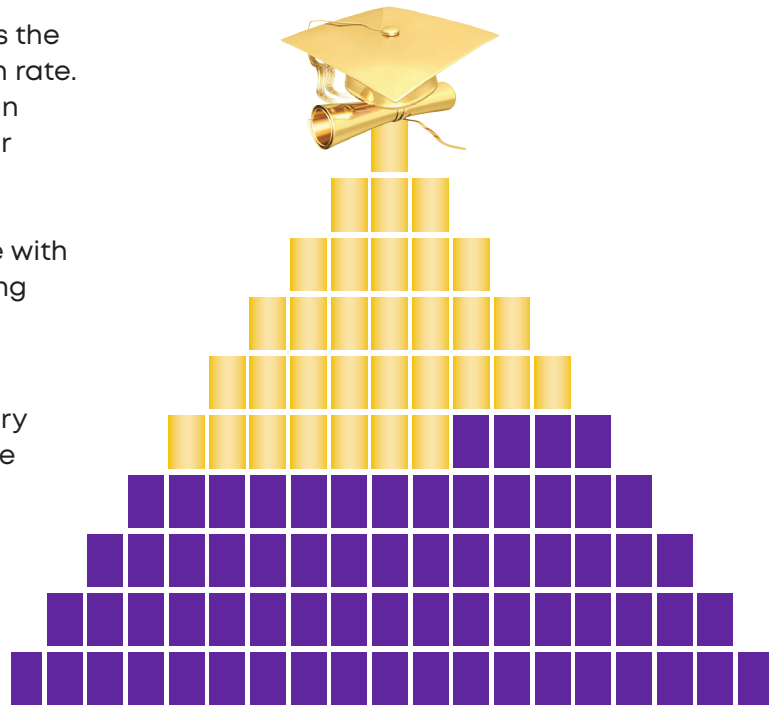
Source: Office of Institutional Research and Effectiveness

Graduation Rates

The overall graduation rate is also known as the “Student Right to Know” or IPEDS graduation rate. It tracks the progress of students who began their studies as full-time, first-time degree or certificate seeking students to see if they complete a degree or other award such as a certificate with 150% (6-years) of “normal time” for completing the program in which they are enrolled.

Students who have transferred to Bethel University after attending another secondary education program are not counted in these totals.

Total for students who began their studies in Fall 2013: **32%**



4-Year Average Graduation and Transfer Out Rates					
Men	2010	2011	2012	2013	4-year Total
Adjusted Cohort	244	262	347	219	1,072
Total Completers Within 150%	76	52	81	55	264
Total Transfer-Out Students	111	N/A	115	71	N/A
Women	2010	2011	2012	2013	4-year Total
Adjusted Cohort	133	180	334	162	809
Total Completers Within 150%	57	68	115	54	294
Total Transfer-Out Students	55	0	74	59	188
Total (men and women)	2010	2011	2012	2013	4-year Total
Adjusted Cohort	377	442	681	381	1,881
Total Completers Within 150%	133	120	196	109	558
Total Transfer-Out Students	166	0	189	130	485

Source: Office of Institutional Research and Effectiveness

BethelUniversity

Fact Book: 2019-20 Academic Year
Completed June, 2020