



VERA LOW
CENTER
FOR
STUDENT ENRICHMENT

FACT BOOK

2018-2019

BethelU.edu

BethelUniversity

325 Cherry Ave., McKenzie, TN

Table of Contents

BETHEL UNIVERSITY

History	3
Bethel University Today	4
Financial Cost.....	6

ADMISSIONS & ENROLLMENT

First-Time Full-Time Freshmen.....	8
Entering Freshmen ACT Scores	9
Direct Costs for Incoming Freshmen	10
All Student Fall Enrollment: 5 Years	11
Students in Distance Education Programs.....	15
Distance Education by Student Location	16
State of Origin	17
Retention Rates	18

ACADEMICS

Bethel's Library Services	20
Learning Support & Tutoring Services.....	21
Credit Hours Taken: Fall Semester 2018.....	22
Non-Degree Programs	23
Successful Course Completion Rates.....	26

STUDENT LIFE

Residence Halls	32
Residence Halls	33
Student Activities	34
Student Organizations	35
Christian Life	36

FACULTY & STAFF

University Organizational Chart	38
Administration.....	39
Full-Time Faculty.....	48

ATHLETICS

Athletic Activities	58
Athletics Organizational Chart.....	59
Intercollegiate Awards & Recognitions 2018-19.....	62

FINANCIAL AID

Financial Aid Overview	64
Average Student Loan Debt.....	65

REVENUES & EXPENDITURES

2017-18 Sources of Revenue & Expenditures.....	68
--	----

CRIME STATISTICS

.....	71
-------	----

GRADUATION

Graduates by College	80
Graduation Rates	81

History

Since its founding in McMoresville, Tennessee, in 1842, Bethel University has grown and changed in ways its founders could have never imagined.

Chartered by the State of Tennessee in 1847, Bethel began as a seminary for the Cumberland Presbyterian Church with the purpose of training young male pastors for the growing denomination. It was not until the college moved to McKenzie in 1872 that it first began to admit women as students.

The oldest existing building on Bethel's campus is Campbell Hall, built in 1923. It was given to the college, along with 11 acres of land, by the city of McKenzie. At that time it offered every facility the college needed in a single building including classrooms, offices, laboratories, a prayer room and an auditorium. It was named for Richard and Alice Campbell in 1983, and it now contains offices and the Lavinia Cole Chapel. Additionally, it boasts the Hall of Presidents, which displays a picture of every president of the college since its inception in 1842.

The Log Cabin was constructed outside Campbell Hall by the freshman class in 1925. The purpose of the building was to show the humble beginnings of the Cumberland Presbyterian Church, and to remind each student, staff and faculty member that the school was built "On the Faith of Our Fathers." When building the cabin each log cost \$35, and whoever donated the money to buy a log would have his or her name engraved on the metal plate on that log. Today, the Log Cabin is used for offices and is adjacent to the Alumni Garden.

Bethel's Theological Department, which had become the Cumberland Presbyterian Theological Seminary, moved to Memphis and changed its name to Memphis Theological Seminary in 1964. In 2009, Bethel College was re-named Bethel University.

Today there are more than 60 course of study options across three colleges that include the College of Arts and Sciences, the College of Professional Studies and the College of Health Sciences. In addition to its main campus in McKenzie, Tenn., Bethel University has satellite campuses across Tennessee in Memphis, Nashville, Clarksville, Jackson, and Paris.



Original McMoresville building, c. 1842



Campbell Hall, c. 1923



Log Cabin and Alumni Garden, c. 1925, Tennessee



Morris Science Complex, 2010 McKenzie, Tennessee



Bethel University's mission is to create opportunities for members of the learning community to develop in a Christian environment their highest intellectual, spiritual, and social potential. This includes synchronous and asynchronous modes of education.

Definitions

By the words "create opportunities," the University offers the means for persons to have choices and options opened before them and to develop the confidence and maturity to choose appropriately.

By the term "learning community," the University extends its mission to all persons who seek development of the whole person and who would choose to pursue the aspiration through Bethel University. The learning community of Bethel University includes undergraduate students in traditional and non-traditional programs, graduate students, faculty, staff, the local community, and the Cumberland Presbyterian Church.

Intellectual development focuses on the cognitive aspect of the human; cognitive development incorporates analysis, critical reflection, and synthesis of knowledge of multiple disciplines. To achieve this outcome, the university will leverage developing technology to efficiently create learning experiences for the community.

Social development focuses on the affective and behavioral aspects of the human; social development incorporates the ability to interact and communicate with other humans with civility and tolerance.

Spiritual development focuses on the metaphysical aspect of the human; spiritual development incorporates the ideas of faith, morality, and practice.

By the term, "Christian environment," the University draws upon the thought of St. Ignatius that the college environment should facilitate knowledge and contemplation such that actions based on unbiased reason and reasonable faith.

Synchronous modes of education means Bethel University offers courses to students in the face-to-face classroom setting, whereas asynchronous means Bethel University offers courses to students in the online classroom platform. By utilizing both the synchronous and asynchronous learning platforms, Bethel University seeks to provide additional educational opportunities to students in the 21st century.

Core Values

Bethel University creates a learning community which:

- Accepts individuals from a wide variety of backgrounds, experiences, and beliefs
- Offers opportunities for individuals to contribute to the University and to other communities in a variety of ways
- Emphasizes human dignity and ethics consistent with the Christian tradition
- Encourages inquiry and the examination of values, self, and society
- Prepares individuals for the life-long pursuit of knowledge in a complex and constantly changing world.

Affiliation

Bethel University is joined in a covenant relationship with the Cumberland Presbyterian Church. Bethel is proud of its heritage as a Cumberland Presbyterian university and of the service it provides to the church in the form of education for current and future leaders.

Accreditation

Regional

Bethel University is accredited by the Southern Association of Colleges and Schools Commission on Colleges to award associate, baccalaureate, and masters degrees. Contact the Commission on Colleges at 1866 Southern Lane, Decatur, Georgia 30033-4097 or call 404-679-4500 for questions about the accreditation of Bethel University.

Program Specific Accreditations

Athletic Training

The Athletic Training Program was officially accredited by the Commission on Accreditation of Athletic Training Education (CAATE) in the Fall of 2015.

Education

Bethel University is approved by the TN Board of Education as a teacher preparation institution for the State of TN.

Nursing

Bethel's Bachelor of Science in Nursing degree is approved by the Tennessee Board of Nursing. Ten-year continuing accreditation was granted to the Nursing Program April 2015 by the Commission on Collegiate Nursing Education (CCNE).

Physician Assistant Program

The Accreditation Review Commission on Education for the Physician Assistant (ARC-PA) has granted-Continued to Bethel's Physician Assistant Program. Accreditation-Continued is an accreditation status granted when a currently accredited program is in compliance with the ARC-PA Standards.



Financial Cost

Tuition Fiscal Year 2018-2019

Tuition and fees for a full-time traditional undergraduate student are \$16,552. Room and board costs for a double room and meal plan are \$9,198.

Financial Aid

Approximately 100% of all entering Full-Time First-Time Freshman received some type of financial assistance in 2017-2018 Financial Aid Year. (Actual amounts for 2017-2018 were used rather than estimated amounts for 2018-2019.)

Total grant aid received by all undergraduate students \$30,732,380
 Number of undergraduate students who received a Pell Grant2,371
 Percentage of First Time - Full Time (FTFT) students receiving any financial aid100%

FTFT Students Receiving Grant Aid by Type

	Percent of FTFT students receiving grant	Average amount of grant aid received
Total	98%	\$15,232
Federal Government	70%	\$4,956
Pell	70%	\$4,782
Other Federal	28%	\$429
State/Local Government	67%	\$4,880
Institutional	85%	\$9,663

FTFT Students Receiving Loans by Type

	Percentage of FTFT students receiving loans	Average amount of loans received
Total	84%	\$5,730
Federal	84%	\$5,571
Non-federal	2%	\$8,142

Average net price for FTFT students who receive grant aid\$15,018

Resource: National Center for Education Statistics (NCES), IPEDS –Student Financial Aid Data

BU



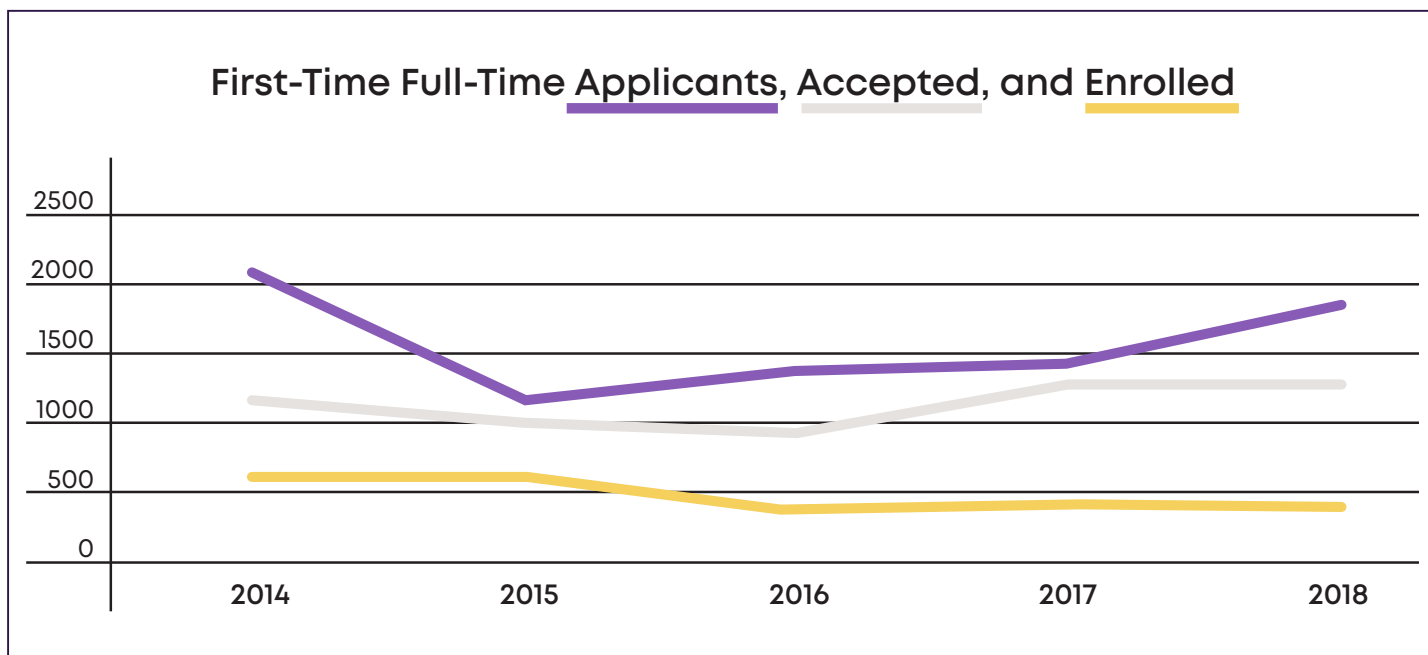
Admissions & Enrollment

First-Time Full-Time Freshmen

First-Time, Full-Time Freshman Data Fall Terms 2014-2018

Year of Fall Term	Applicants	Accepted	% of Applied Who Were Accepted	Enrolled	% of Accepted that Enrolled
2014	2062	1,175	57%	635	54%
2015	1149	965	84%	627	65%
2016	1353	900	67%	407	45%
2017	1388	1,299	94%	456	35%
2018	1898	1,262	66%	412	33%

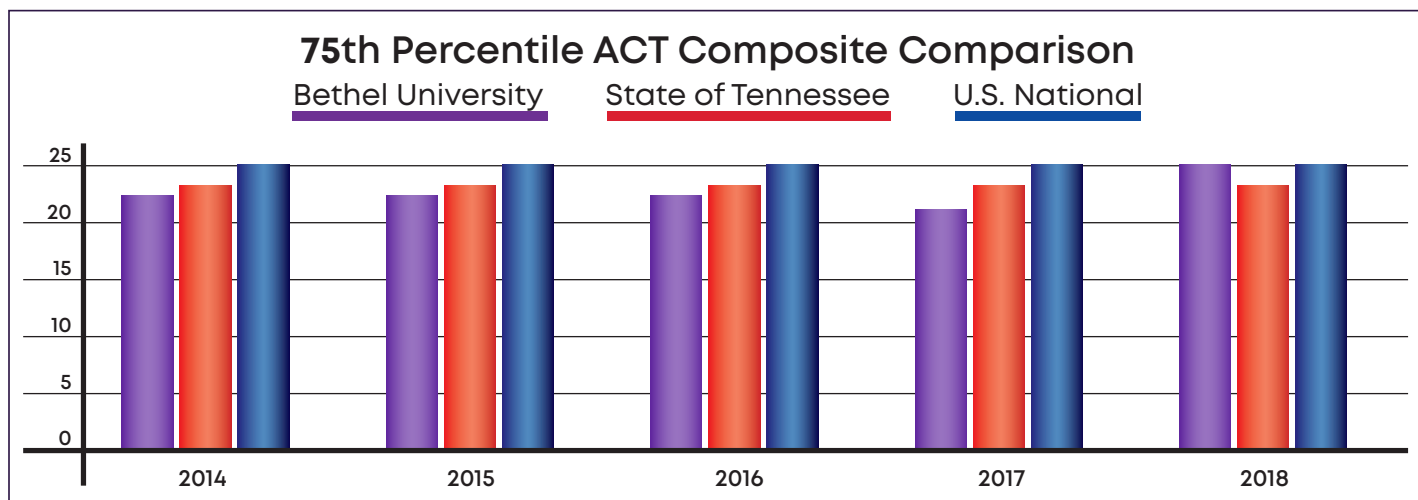
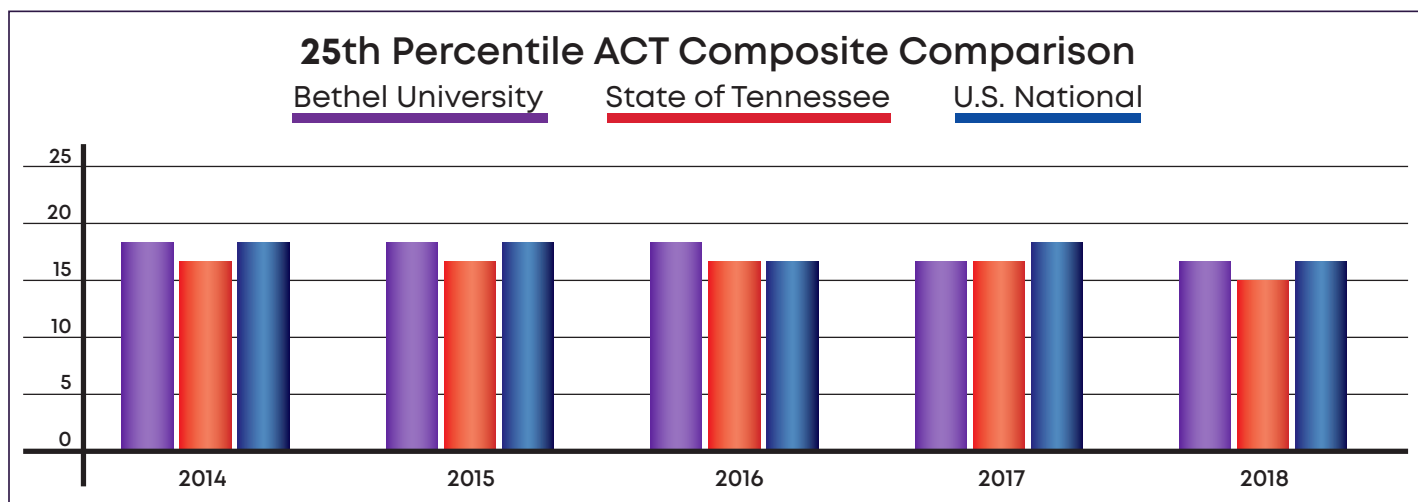
First-Time Full-Time Applicants, Accepted, and Enrolled



Source: Office of Institutional Research and Effectiveness

Entering Freshmen ACT Scores

American College Testing Program (ACT) Scores for First-Time Full-Time Freshmen						
Year	Bethel University		State of Tennessee		U.S. National	
	25th Percentile ACT Composite	75th Percentile ACT Composite	25th Percentile ACT Composite	75th Percentile ACT Composite	25th Percentile ACT Composite	75th Percentile ACT Composite
2014	17	22	16	23	17	25
2015	17	22	16	23	17	25
2016	17	22	16	23	16	25
2017	16	21	16	23	17	25
2018	16	25	15	23	16	25

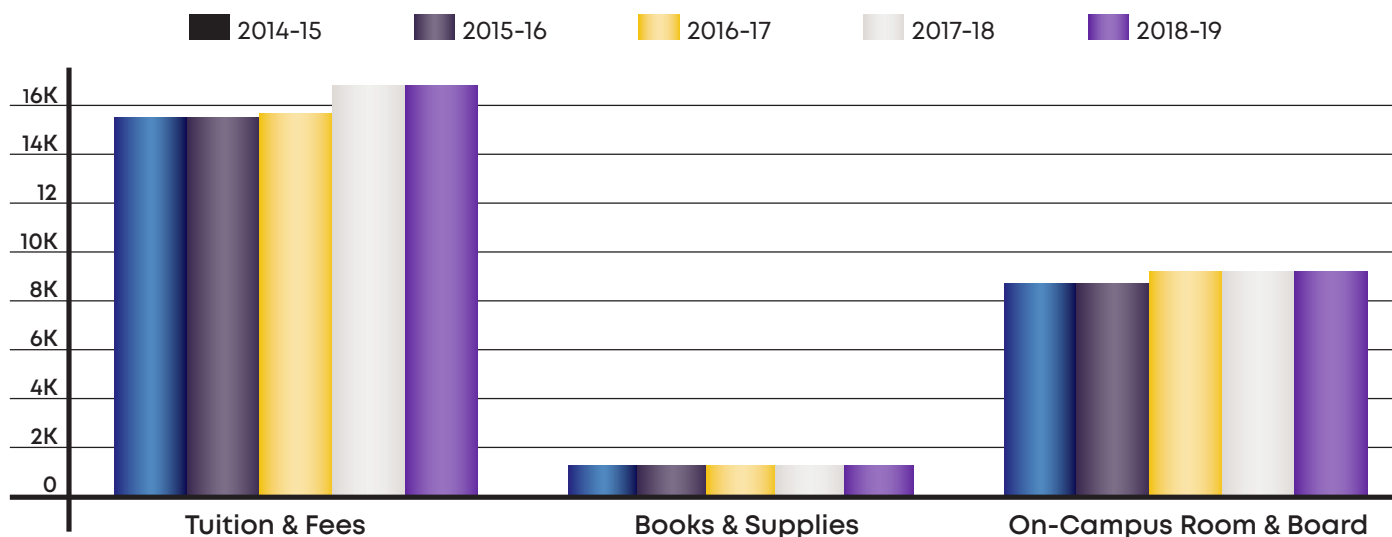


Source: ACT.org and the Office of Institutional Research and Effectiveness

Direct Costs for Incoming Freshmen

Tuition, Fees, and On-Campus Room & Board (Direct Cost) Comparison Information						
Academic Year	Tuition & Fees	% Increase in Tuition from Prior Year	Books & Supplies	% Increase in Books & Supplies from Prior Year	On-Campus Room & Board	% Increase in Room & Board from Prior Year
2014-2015	\$15,714	0%	\$12,000	0%	\$8,782	0%
2015-2016	\$15,714	0%	\$12,000	0%	\$8,782	0%
2016-2017	\$15,764	.3%	\$12,000	0%	\$9,198	4.7%
2017-2018	\$16,552	5%	\$12,000	0%	\$9,198	0%
2018-2019	\$16,552	0%	\$12,000	0%	\$9,198	0%

Direct Costs Comparison: 2014 through 2018



Source: Office of Institutional Research and Effectiveness

All Student Fall Enrollment: 5 Years

Academic Year	2014-15	2015-16	2016-17	2017-18	2018-19
Total Full-Time enrollment	6229	6318	5975	5779	5407
Undergraduate enrollment	4792	5021	4829	4829	4560
Undergraduate transfer-in enrollment	504	391	632	510	355
Graduate enrollment	1437	1297	1146	950	847
Student-to-faculty ratio	12 to 1	17 to 1	17 to 1	20 to 1	17 to 1

All Student Demographics

Percent of all students who are female	59%	59%	59%	57%	57%
Percent of all students who are male	41%	41%	41%	43%	43%

Percent of All Students by Race/Ethnicity:

American Indian or Alaska Native	0%	1%	1%	1%	1%
Asian	0%	1%	1%	1%	1%
Black or African American	39%	36%	37%	37%	35%
Hispanic/Latino	1%	2%	2%	2%	2%
Native Hawaiian or Pacific Islander	0%	0%	0%	0%	0%
White	51%	54%	53%	53%	52%
Two or More Races	1%	1%	1%	2%	4%
Race and ethnicity unknown	6%	5%	4%	3%	2%
Nonresident alien	1%	1%	1%	1%	2%

Academic Year	2014-15	2015-16	2016-17	2017-18	2018-19
Percent of female undergraduate students	57%	58%	58%	56%	56%
Percent of male undergraduate students	43%	42%	42%	44%	44%
Percent of undergraduates who are full-time	72%	71%	72%	72%	65%

Percent of Undergraduates by Race/Ethnicity:

American Indian or Alaska Native	1%	1%	1%	1%	1%
Asian	0%	1%	1%	1%	1%
Black or African American	38%	35%	36%	36%	33%
Hispanic/Latino	2%	2%	2%	2%	3%
Native Hawaiian or Pacific Islander	0%	0%	0%	0%	0%
White	51%	55%	55%	54%	54%
Two or more races	1%	1%	1%	2%	4%
Race and ethnicity unknown	6%	5%	3%	2%	2%
Nonresident alien	1%	1%	1%	1%	2%

All Student Fall Enrollment (continued)

Undergraduate Retention and Graduation Rate Cohort

First-time, full-time bachelor's seeking student retention rate	56%	60%	59%	60%	57%
Graduation rate cohort as percent of total entering students	40%	32%	24%	27%	24%

Academic Year	2014-15	2015-16	2016-17	2017-18	2018-19
Graduate enrollment	1437	1407	1146	950	847
Percent of female graduate students	66%	64%	65%	63%	64%
Percent of all male graduate students	34%	36%	35%	37%	36%
Percent of graduate students who are full-time	69%	86%	86%	73%	68%

Percent of Graduate Students by Race/Ethnicity:

Nonresident alien	0%	0%	0%	1%	1%
Hispanic/Latino	1%	1%	1%	1%	2%
American Indian or Alaska Native	0%	0%	0%	0%	0%
Asian	0%	1%	1%	2%	1%
Black or African American	41%	40%	43%	45%	46%
Native Hawaiian or Pacific Islander	0%	0%	0%	0%	1/%
White	51%	49%	45%	45%	44%
Two or more races	1%	7%	1%	2%	2%
Race and ethnicity unknown	6%	1%	8%	4%	4%

Source: Office of Institutional Research and Effectiveness

Fall 2018 Enrollment

College of Arts and Sciences



High School Dual Enrollment Non-Degree

Undeclared 1165

Associate Degree Majors

Associate-General Studies 36

Bachelor's Degree Majors

Art 7
 Biology 3
 Biology (Biology Education) 5
 Biology (Field/Environmental) 18
 Biology (General Biology) 29
 Biology (Pre-Professional Health) 71
 Business Administration (Accounting) 35
 Business Administration 29
 (Computer Information Systems)
 Business Administration (Management) 174
 Chemistry 7
 Child Learning & Development 46
 Christian Ministries 3
 Christian Studies (Pre-Ministries Prep) 8
 Christian Studies (Support Ministries) 4
 Criminal Justice Studies 83
 English 13
 Exceptional Learning & Development 7
 Fitness and Wellness Promotion 76
 History 20

Human Services 26
 Interdisciplinary Studies 5
 Mathematics 14
 Music (Music & Worship) 6
 Music (Performance) 3
 Music Education 20
 Music Industry Studies (Music Business) 10
 Music Industry Studies (Production & Tech) 17
 Music Industry Studies 22
 (Production/Recording Arts)
 Physical Education 65
 Pre-Nursing 107
 Pre-Pharmacy 7
 Pre-Professional Health Studies 2
 Psychology 81
 Student Initiated Major (S.I.M.) 1
 Sociology 15
 Theatre 17
 Undeclared 92
Total 1095

Master's Degree Majors

Edu. (Non-Degree Licensure) 37
 M.A.Ed. (Instructional Leadership) 37
 M.A.Ed. (Teaching Excellence) 63
Total 137

Source: Office of Institutional Research and Effectiveness

Fall 2018 Enrollment

College of Professional Studies



Associate Degree Majors

Associate-Accounting.....	1
Associate-Business.....	176
Associate-Criminal Justice.....	86
Associate-Customer Relationship Management.....	23
Associate-General Studies.....	14
Associate-Liberal Arts.....	8
Total	308

Bachelor's Degree Majors

Criminal Justice.....	581
Emergency Services Management.....	90
Management and Organizational Development.....	358
Organizational Leadership.....	770
Total	1799

Master's Degree Majors

Business Administration (Academic Practitioner).....	187
Business Administration (Executive).....	53
Business Administration (Healthcare Administration).....	73
Business Administration (HR Management).....	145
Criminal Justice.....	152
Total	610

Fall 2018 Enrollment

College of Health Sciences



Bachelor's Degree Majors

Athletic Training.....	26
Nursing – On Campus.....	47
Nursing – RN2BSN.....	12
Total	85

Master's Degree Majors

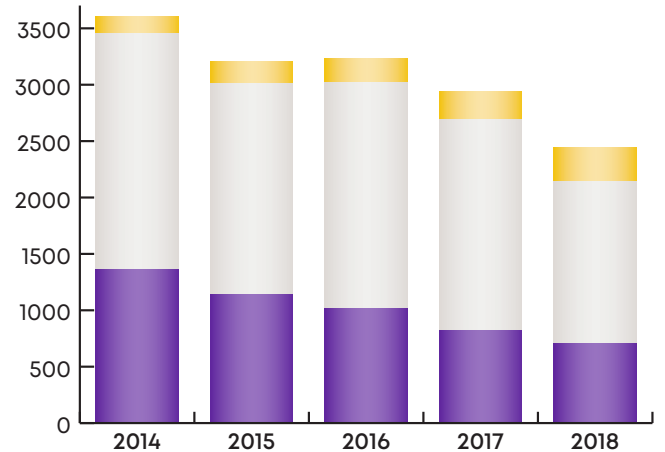
Physician Assistant Studies.....	99
----------------------------------	----

Students in Distance Education Programs

Distance Education Totals by Degree

This excludes the Management & Organizational Development (on-campus) students enrolled in online concentration courses

Degree	Fall '14	Fall '15	Fall '16	Fall 2017	Fall 2018
● Associate	142	179	200	243	296
● Bachelor's	2106	1880	2002	1869	1438
● Master's	1359	1140	1024	823	701
Total	3607	3199	3226	3287	2435



Distance Education Totals by Degree Program (Fall Semester enrollment numbers)

ASSOCIATE DEGREE PROGRAM	2014	2015	2016	2017	2018
Accounting	34	24	6	1	1
Business	0	26	65	134	172
Computer Information Systems	22	3	-	-	-
Criminal Justice	50	95	108	89	86
Customer Relationship Management	1	9	16	19	23
General Studies	29	10	2	0	14
Information Technology	4	7	2	-	-
Emergency Services Management	2	5	1	-	-
BACHELOR'S DEGREE PROGRAM	2014	2015	2016	2017	2018
Criminal Justice	891	735	763	744	581
Emergency Services Management	81	102	95	82	90
Organizational Leadership	1129	1043	1144	1043	767
MASTER'S DEGREE PROGRAM	2014	2015	2016	2017	2018
MBA (Academic Practice)	124	217	237	227	187
MBA (Executive)	455	150	93	79	53
MBA (Healthcare Administration)	47	88	75	74	74
MBA (Healthcare –IT)	3	5	2	1	-
MBA (Human Resource Management)	61	121	146	149	145
MBA (IT)	6	19	12	4	-
Conflict Resolution	154	90	37	6	-
Criminal Justice	137	145	176	194	152
Education (Instructional Leadership)	282	173	129	3	37
Education (Teaching Excellence)	90	132	117	86	53
Grand Total	3602	3199	3226	2935	2435

Source: Office of Institutional Research and Effectiveness

Distance Education by Student Location

% of Out-of-State Students vs % of In-State Students Fall Semester Enrollment Numbers

2014		2015		2016		2017		2018	
Out of State	TN	Out of State	TN	Out of State	TN	Out of State	TN	Out of State	TN

ASSOCIATE DEGREE PROGRAM

Accounting	18%	82%	25%	75%	17%	83%	0%	100%	0%	100%
Business	0%	0%	4%	96%	15%	85%	12%	88%	15%	85%
Computer Information Systems	23%	77%	0%	100%	0%	0%	0%	0%	0%	0%
Criminal Justice	16%	84%	15%	85%	20%	80%	21%	79%	24%	76%
Customer Relationship Mgmt.	0%	100%	22%	78%	19%	81%	26%	74%	17%	83%
General Studies	21%	79%	10%	90%	0%	100%	0%	0%	0%	100%
Information Technology	50%	50%	0%	100%	0%	100%	0%	0%	0%	0%
Emergency Services Mgmt.	50%	50%	20%	80%	0%	100%	0%	0%	0%	0%

BACHELOR'S DEGREE PROGRAM

Criminal Justice	20%	80%	20%	80%	18%	82%	16%	84%	17%	83%
Emergency Services Mgmt.	12%	88%	15%	85%	14%	86%	18%	82%	14%	86%
Organizational Leadership	25%	75%	21%	79%	21%	79%	17%	83%	18%	82%

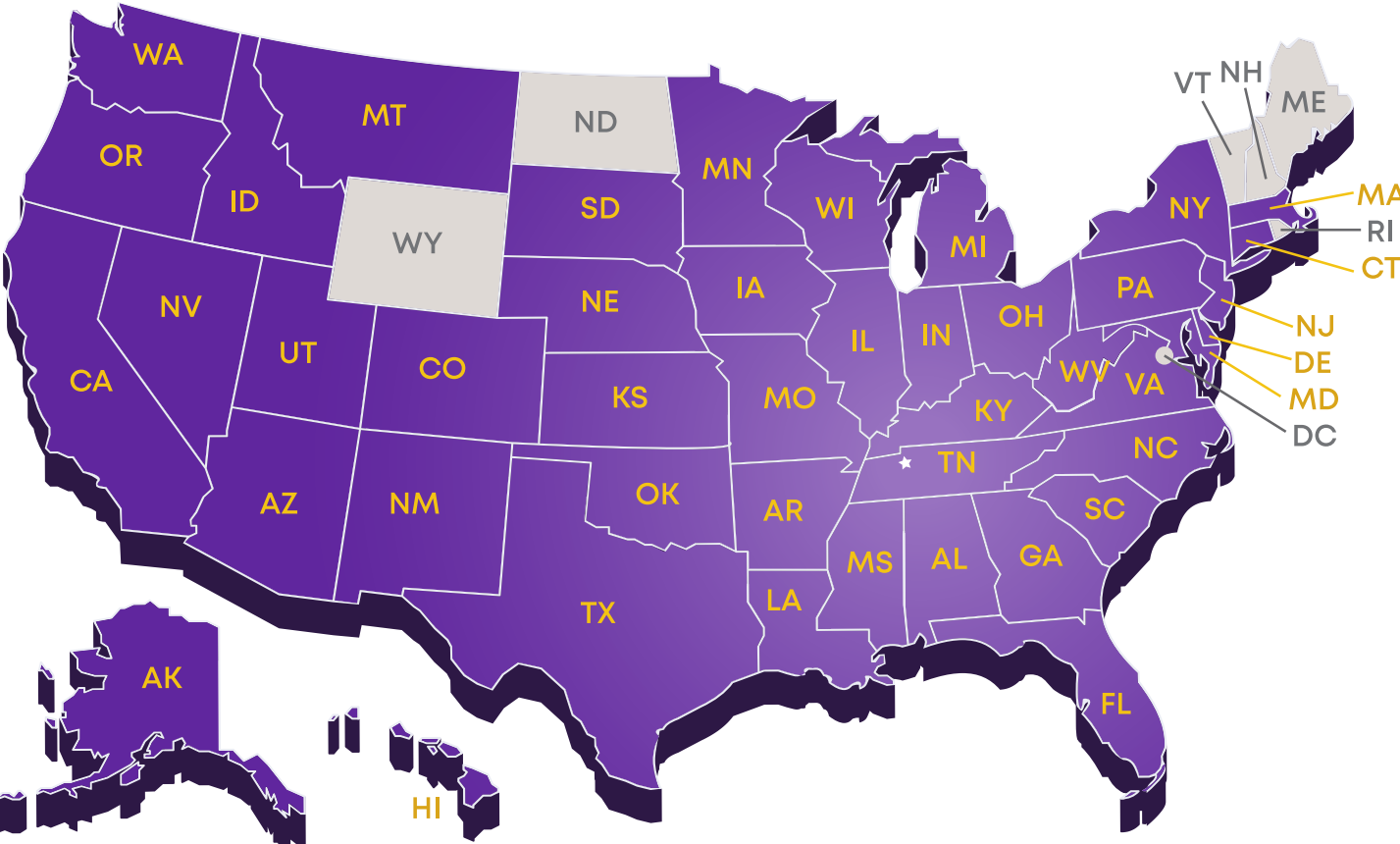
MASTER'S DEGREE PROGRAM

MBA (Academic Practitioner)	15%	85%	17%	83%	17%	83%	15%	85%	19%	81%
MBA (Executive)	17%	83%	15%	85%	16%	84%	19%	81%	25%	75%
MBA (Healthcare Administration)	32%	68%	22%	78%	24%	76%	24%	76%	20%	80%
MBA (Healthcare-IT)	0%	100%	0%	100%	0%	100%	0%	100%	0%	0%
MBA (Human Resource Mgmt.)	20%	80%	17%	83%	13%	87%	11%	89%	18%	82%
MBA (Information Technology)	33%	67%	26%	74%	25%	75%	0%	100%	0%	0%
Conflict Resolution	12%	88%	11%	89%	14%	86%	17%	83%	0%	0%
Criminal Justice	13%	87%	18%	82%	16%	84%	0%	100%	19%	81%
Education (Instructional Leadership)	5%	95%	5%	95%	0%	100%	10%	90%	3%	97%
Education (Teaching Excellence)	8%	92%	8%	92%	6%	94%	16%	84%	4%	96%
Grand Total	19%	81%	18%	82%	18%	82%	16%	84%	17%	83%

Source: Office of Institutional Research and Effectiveness

State of Origin

In the Fall semester of 2018, Bethel University's on campus students originated from 44 states across the country as designated by the purple states below.



Source: Office of Institutional Research and Effectiveness

Retention Rates

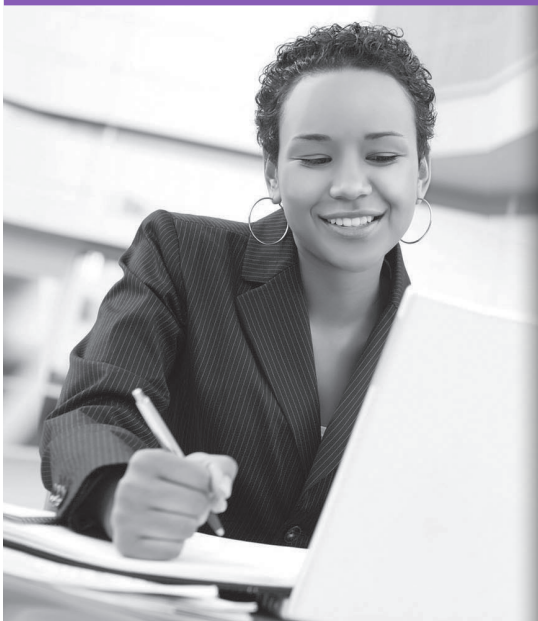
Freshman Year	Cohort Total #	2 nd Year	3 rd Year	4 th Year	5 th Year	6 th Year	7 th Year	8 th Year
2011	442	57%	39%	36%	30%	29%	28%	26%
2012	474	63%	44%	38%	35%	33%	30%	
2013	381	59%	44%	38%	36%	34%		
2014	626	56%	40%	34%	32%			
2015	476	64%	46%	N/A				
2016	400	60%	44%					
2017	446	57%						
2018	408							

The chart below adjusts the retention rates removing students who left Bethel University and continued their education at another university.

Freshman Year	Cohort Total #	Total Transfers	Adjusted Total for Transfers	2 nd Year	3 rd Year	4 th Year	5 th Year	6 th Year	7 th Year	8 th Year
2011	442	196	246	79%	74%	74%	71%	72%	72%	72%
2012	474	191	283	76%	70%	69%	66%	64%	64%	
2013	381	163	218	77%	70%	70%	70%	69%		
2014	626	234	392	73%	66%	64%	62%			
2015	476	286	190	74%	60%	60%				
2016	400	117	283	75%	61%					
2017	446	73	373	68%						
2018	408									

Source: Office of Institutional Research and Effectiveness and National Student Loan Clearinghouse

BU



Academics

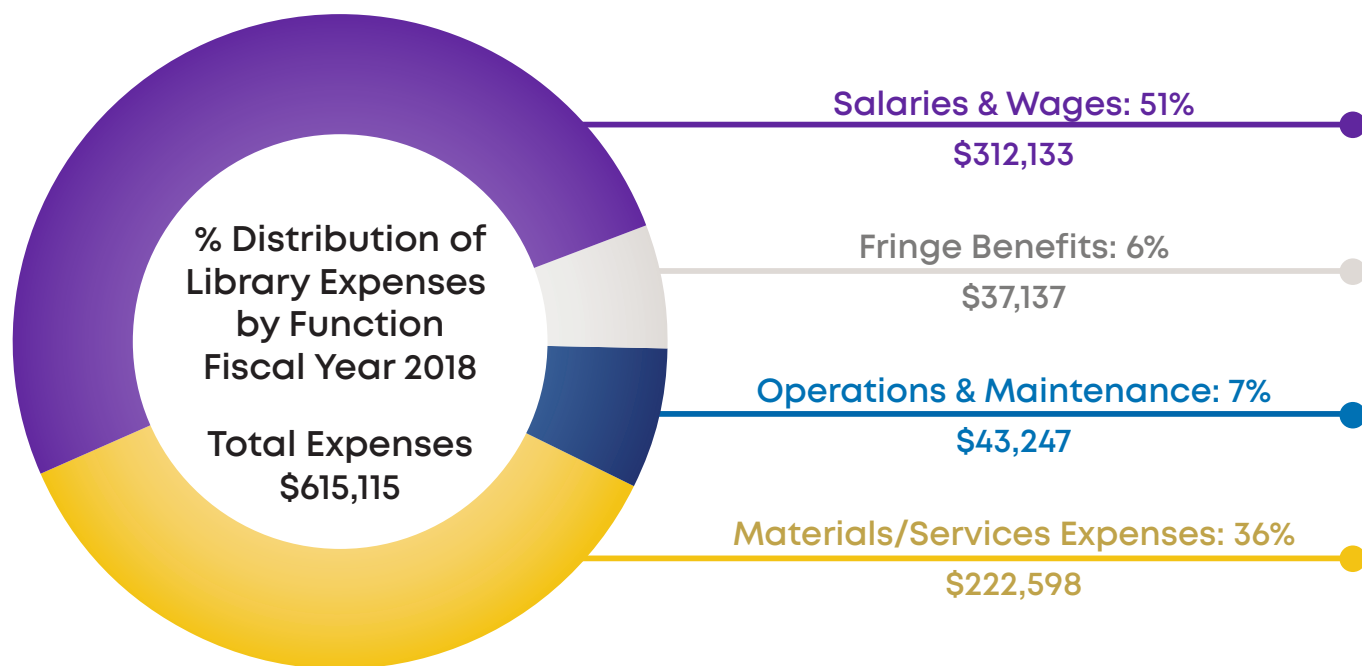
Bethel's Library Services

Bethel University provides a wide range of library and learning resources for students, faculty, and staff. All resources are available to all students and faculty. Instruction and guidance in the location and use of resources is available through the library staff both at the campus in McKenzie and through electronic means at all locations. Information is also available through the library website.

A large collection of electronic resources is available to all students and faculty regardless of their physical location. In addition, the Burroughs Learning Center located on the McKenzie campus offers study and meeting space for quiet study, group projects, and meetings. Printing is available for a nominal fee. The physical book collection is housed in the Burroughs Learning Center although materials are shipped to students and faculty at off-campus sites and in online programs. Interlibrary loan is available to every student and faculty member.

Links To Online Library Services:

- College of Arts and Sciences and College of Health Sciences: bethelu.libguides.com/bulibrary
- College of Professional Studies: bethelu.libguides.com/cps



Reference Questions Answered:

College of Arts & Sciences: 40
 College of Professional Studies: 876*

Instruction Presentations:

College of Arts & Sciences: 45
 College of Professional Studies: 36*

*10-month total

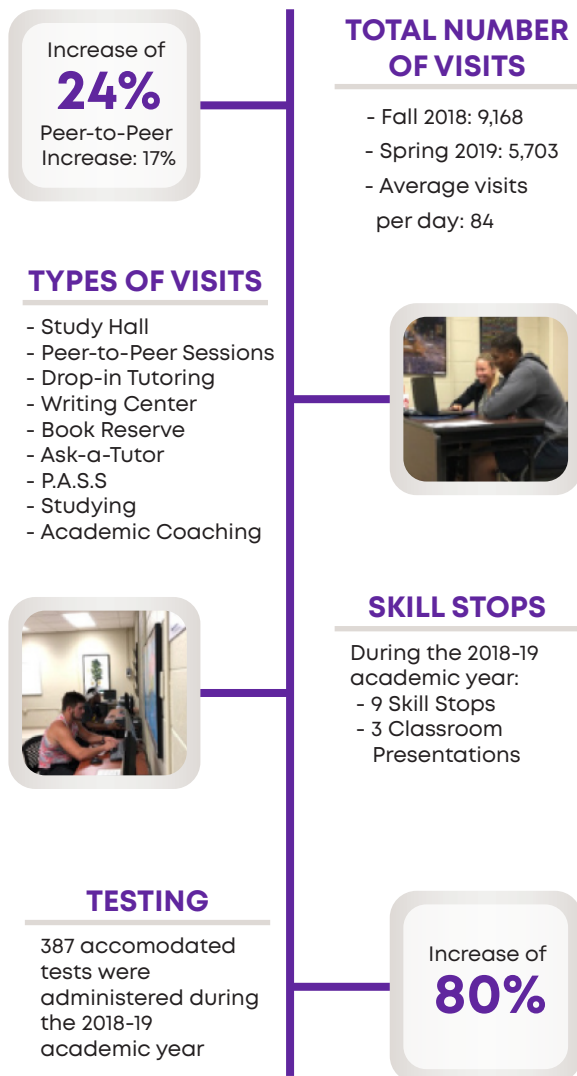
Library Collections and Circulation	Physical Collection	Digital/Electronic Collection
Books	24,675	210,308
Databases	--	93
Media	1,693	48,605
Serials	12	66,436
Total Collection	26,380	325,442
Library Circulation	2,291	21,517

Learning Support & Tutoring Services

Bethel CASA

The Center for Academic Student Achievement is located in the lower level of the Burroughs Learning Center Library for College of Arts and Sciences and College of Health Sciences students.

CASA received 3rd place in the Learning Center Web Site Excellence Program for 2018. This award was given by Learning Support Centers in Higher Education Web Portal and the National College Learning Center Association at the NCLCA National Convention in October 2018.



Bethel Online Library & Learning Services

The CPS Academic Achievement Center (AAC) is available for College of Professional Studies students through online chat, phone, text messages, video conference, or in-person. In May 2019, the AAC program became part of the Online Library & Learning Services department.

Learning Services partners with students to reach their educational goals by utilizing their specific strengths and resources. It can be challenging to balance the demands of life and school. Learning Services can ease the stress with goal setting, time management tools, effective study strategies, and more.

2018-19 Accomplishments

(Note: the academic year is not over for the College of Professional Studies at this time. The numbers shown here are a 10-month total.)

226

Students referred to AAC for assistance

41%

Students who contacted AAC for assistance improved their GPA

83

Classes reviewed to check for students who may need assistance

4,522

Visits to the AAC website

Credit Hours Taken: Fall Semester 2018

College of Arts and Sciences (CAS)

High School Dual Enrollment Program	3,225
Undergraduate Programs*	15,543
Graduate Program	692
Total Hours all CAS Programs	19,460

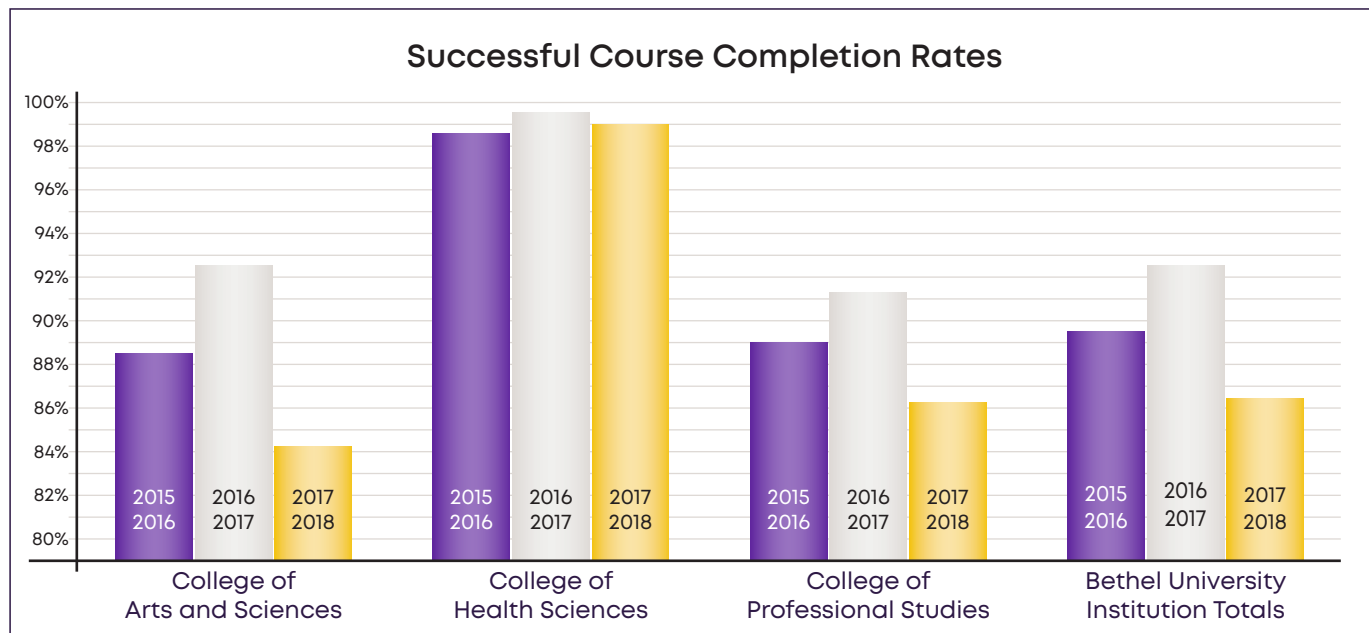
*total is both Associate and Bachelor combined hours

College of Health Sciences (CHS)

Bachelor's Programs	885
Graduate Program	2,215
Total Hours all CHS Programs	3,100

College of Professional Studies (CPS)

Associate Programs.....	2,199
Bachelor's Programs	13,350
Graduate Programs.....	2,264
Total Hours all CPS Programs	17,813



Source: Office of Institutional Research and Effectiveness

Non-Degree Programs

College of Arts and Sciences

High School Dual Enrollment Program

Bethel University's Dual Enrollment Program is a non-degree seeking program which allows eligible high school students to enroll in college classes concurrently with high school classes. Classes are taught either on line or at the high school, and students may receive both high school and college credit if applicable.

Dual Enrollment Eligibility Information

Eligible students are in the 11th or 12th grade and have a 3.0 GPA in their completed high school courses OR an ACT composite score of 21 or higher. They must have the written approval of the high school principal, school counselor, and their parents/legal guardians.

Cost of Attendance Bethel's dual enrollment tuition cost for the 2018-19 academic year is \$500 per 3 hour course before any grants or scholarships are applied. If students are enrolled in an online dual enrollment course, there is no additional charge for text. If a student is enrolled in a face to face class, the student is responsible for the cost of the text book for the class and any other fees associated with the class.

High Schools in Tennessee Where Dual Enrollment Courses Are Offered

- Adamsville High School
- Bolton High School
- Booker T Washington High School
- Bradford High School
- Central High School (Memphis)
- Collegiate School of Memphis
- Craigmont High School
- Cross Creek Christian School
- Douglass High School
- Dresden High School
- East High School
- Gleason High School
- Greenfield High School
- Halls High School
- Hamilton High School
- Hollow Rock Bruceton Central High School
- Holloway High School
- Home School Institutes
- Houston High School - Memphis
- Humboldt High School
- Huntingdon High School
- Kingsbury High School
- Kirby High School
- Lewis County High School
- Manassas High School
- McKenzie High School
- Melrose High School
- Memphis Academy
- Mitchell High School
- Obion County High School
- Perry County High School
- Raleigh Egypt
- Ridgeway High School
- Sheffield High School
- Smyrna High School
- Stewart County High School
- Trezevant High School
- West Carroll High School
- Westview High School
- Westwood High School
- White Station High School
- Wooddale High School

College of Arts and Sciences (CAS)

Associate of Science

- General

Bachelor of Science

- Biology (Emphasis: Biology Education)
- Biology (Emphasis: Field/Environmental Biology)
- Biology (Emphasis: General Biology)
- Biology (Emphasis: Pre-Professional Health)
- Business of Administration (Emphasis: Accounting)
- Business of Administration (Emphasis: Computer Information Systems)
- Business of Administration (Emphasis: Management)
- Chemistry
- Chemistry (Emphasis: Biochemistry)
- Child Learning and Development
- Criminal Justice Studies
- Exceptional Learning and Development
- Fitness and Wellness Promotion
- History
- Human Services
- Interdisciplinary Studies
- Mathematics
- Music Education
- Music Industry Studies (Emphasis: Music Business)
- Music Industry Studies (Emphasis: Music Production & Recording Arts)
- Physical Education
- Pre-Pharmacy (3 + 1 Program)
- Psychology
- Sociology
- Student Initiated Major

Associate of Arts

- General

Bachelor of Arts

- Art
- Christian Studies
- English
- History
- Human Services
- Interdisciplinary Studies
- Music
- Music (Emphasis: Performance)
- Music (Emphasis: Music and Worship)
- Psychology
- Sociology
- Student Initiated Major
- Theatre

Master of Arts in Education

- MAEd Non-Licensure
- Leadership Excellence

Degree Programs & Majors



College of Professional Studies (CpS)

Associate of Applied Science

- Business
- Criminal Justice
- Customer Relationship Management
- Liberal Arts

Bachelor of Science

- Management & Organizational Development
- Organizational Leadership
- Criminal Justice
- Emergency Services Management

Concentration options available for some of these degree programs include:

- Healthcare Management
- Information Technology
- Customer Relationship Management
- Fire Science

Associate of Arts

- Business
- Criminal Justice
- Customer Relationship Management
- Liberal Arts

Master of Arts Business Administration

- Academic Practitioner
- Executive
- Healthcare Administration
- Human Resource Management

Master of Science

- Criminal Justice

College of Health Sciences (CHS)

Bachelor of Science

- Nursing
- Athletic Training

Master of Science

- Physician Assistant Studies

Successful Course Completion Rates

ACADEMIC YEAR 2015-2016							
College	TOTAL Course Enrollment	Total Successfully Completed	Course Completion Average	High School Dual Enroll	10-200 Level	300-400 Level	500-600 Level
Arts & Sciences	19,635	17,360	88.41%	97.17%	83.09%	94.43%	96.06%
Health Sciences	2,862	2,821	98.57%	N/A	88.73%	95.27%	99.95%
Professional Studies	30,878	27,475	88.98%	N/A	85.64%	90.30%	92.83%
Institution Total	53,375	47,656	89.29%	97.17%	84.39%	91.37%	95.35%

ACADEMIC YEAR 2016-2017							
College	TOTAL Course Enrollment	Total Successfully Completed	Course Completion Average	High School Dual Enroll	10-200 Level	300-400 Level	500-600 Level
Arts & Sciences	16,798	15,536	92.49%	96.01%	90%	96.08%	96.08%
Health Sciences	3,406	3,389	99.50%	N/A	95.27%	99.25%	99.91%
Professional Studies	23,466	21,441	91.37%	N/A	88.60%	92.22%	96.36%
Institution Total	43,438	40,137	92.40%	96.01%	89.08%	93.67%	97.78%

ACADEMIC YEAR 2017-2018							
College	TOTAL Course Enrollment	Total Successfully Completed	Course Completion Average	High School Dual Enroll	10-200 Level	300-400 Level	500-600 Level
Arts & Sciences	15,225	12,805	84.11%	98.07%	81%	90.90%	94.36%
Health Sciences	3,133	3,102	99.01%	N/A	93.22%	98.29%	99.49%
Professional Studies	23,548	20,281	86.13%	N/A	82.71%	88.15%	90.57%
Institution Total	41,906	36,188	86.36%	98.07%	81.92%	89.57%	93.80%

Licensure & Certification Rates

College of Health Sciences



Athletic Training Program

BOC Pass Rate Table

Once a BOC ID is matched to each student in a cohort, and the student has taken the BOC exam, this table will populate from data directly from the BOC. The aggregate pass rate is calculated by the number of graduates taking the exam divided by the number of graduates who pass the exam. Important note: The first time pass rate and total pass rate may be different than what was previously received by programs from the BOC in the Institution Pass Report. The BOC pass rate on previous reports from the BOC was calculated without regard to student cohort and was based on the BOC exam year (April-February of each year). BOC pass rate data posted on the program's website MUST match the data on this table.

Programs must meet or exceed a 3-year aggregate of 70 percent first-time pass rate on the BOC exam.

Student BOC Pass Rate	2011 2012	2012 2013	2013 2014	2014 2015	2015 2016	2016 2017	2017 2018	3-year aggregate
Number of students graduating from program.	0	0	0	8	8	12	11	31
Number of students graduating from program that took examination.	0	0	0	7	5	8	8	21
Number of students who passed the examination on the first attempt.	0	0	0	2	1	0	2	3
Percentage of students who passed the examination on the first attempt.	0	0	0	29	20	0	25	14
Number of students who passed the examination regardless of the number of attempts.	0	0	0	2	2	1	2	5
Percentage of students who passed the examination regardless of the number of attempts.	0	0	0	29	40	12	25	24

Student Graduation Rate:

Graduation rate (taken from United States Department of Education): Measures the progress of students who began their studies as full-time, first-time degree- or certificate-seeking students by showing the percentage of these students who complete their degree or certificate within a 150% of "normal time" for completing the program in which they are enrolled.

Graduation rate is calculated as: the sum of students with a Graduated status divided by the total number of students in the cohort (excluding students with the status of leave of absence (medical) or deceased).

Student Graduation Rate	2011 2012	2012 2013	2013 2014	2014 2015	2015 2016	2016 2017	2017 2018	3-year aggregate
Number of students graduating from program.	0	0	0	8	8	12	11	31
Student Graduation Rate	0	0	0	89	80	60	48	58

Licensure & Certification Rates

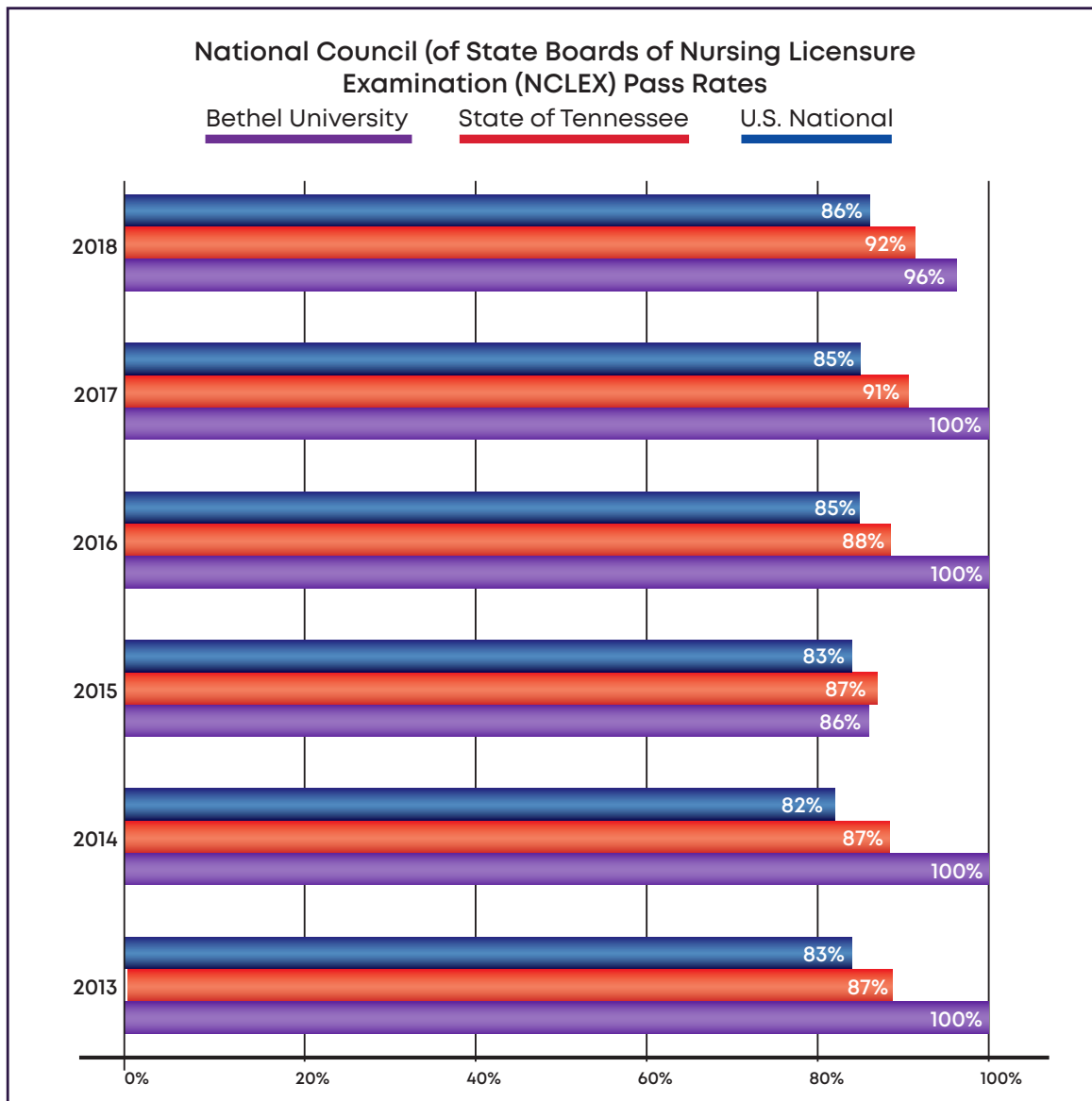
College of Health Sciences



Nursing Program

The Bethel University Bachelor of Science in Nursing degree prepares graduates for entry-level professional positions in primary, secondary, and tertiary care settings serving persons of all ages from diverse populations and for advancement to a graduate degree program in nursing. The program is approved by the Tennessee Board of Nursing and accreditation is granted by the Commission on Collegiate Nursing Education (CCNE). Candidates in Bethel University's Nursing Program are required to complete the National Council (of State Boards of Nursing) Licensure Examination. Successful completion of this examination is required for licensure as a Registered Nurse. Licensure is required of any graduate who wishes to practice as a Registered Nurse.

Bethel's Bachelor of Science in Nursing students have exceeded the National First-Time pass rates for the past six years. In 2013, 2014, 2016 and 2017, the First-Time pass rates were 100%. In 2015, they dropped slightly below the State of Tennessee First-Time pass rates but still exceeded the National First-Time pass rates. Bethel's Nursing program continues to evaluate data to improve instruction and continue to exceed the National rates. *Source: National Center for Education Statistics (NCES)*



Licensure & Certification Rates

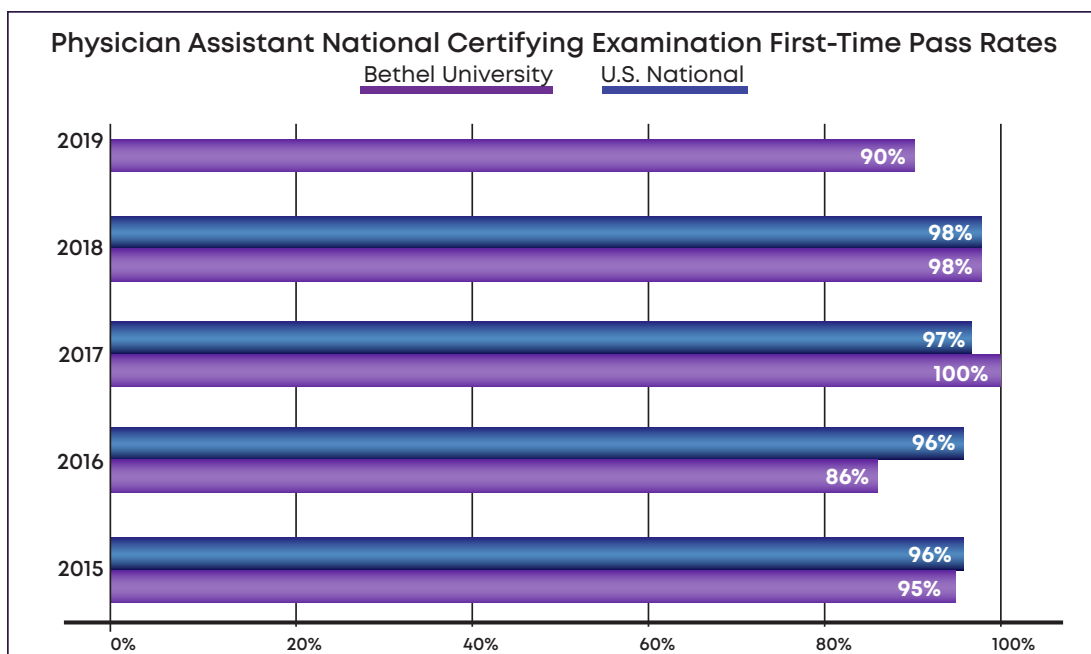
College of Health Sciences



Physician Assistant Studies Certification

Candidates in Bethel University's Physician Assistant Studies are required to complete the National Commission on Certification of Physician Assistants (NCCPA) Physician Assistant National Certifying Exam (PANCE). All U.S. states, the District of Columbia, and the U.S. territories rely on this certification as one of the criteria for licensure or regulation of physician assistants. Physician Assistant Studies continuously strives for excellence by making adjustments to course work as needed to meet or exceed National standards. *Source: Physician Assistant National Certifying Exam (PANCE)*

BETHEL UNIVERSITY PA PROGRAM DATA CLASS 2015-2019					
Class of	2015	2016	2017	2018	2019
Matriculants	49	43	50	50	50
Number of Graduates	44	42	48	50	50
Bethel PANCE First Time Pass Rate	95%	86%	100%	98%	90%
National First Time Pass Rate	96%	96%	97%	98%	Pending
% of Graduates who ultimately passed the PANCE	98%	100%	100%	100%	Pending
% Employed as PA	98%	100%	100%	96%	Pending
Class of 2015 – 95% employment within 1-8 months of graduation					
Class of 2016 – 100% employment within 9 months of graduation					
Class of 2017 – 100% employment within 9 months of graduation (only 40% response rate)					
Class of 2018 – 96% employment within 6 months of graduation (only 52% response rate)					
Class of 2019 – Pending					



Licensure Completion Rates

Division of Education



2018-2019 EPP Data

2018-19 edTPA Pass Rate

- IEE 100%
- SPED 100%

2018-19 Placement rates for Student Teachers

- 57% of student teachers are working in schools
- 43% are currently pursuing postgraduate education

Bethel University's EPP Employer Satisfaction Data

87.2% of Bethel University's EPP completers have LOE ratings of 3 or higher. This data displays that a large majority of completers of this program are at expectations or significantly above expectations, according to the TEAM Rubric Indicators.

Bethel University's EPP Completer Satisfaction

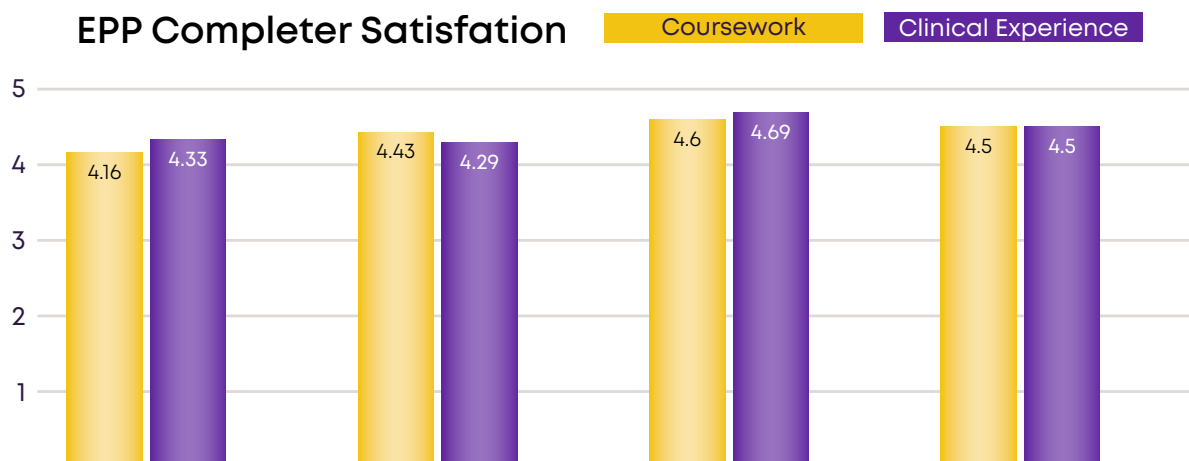
The percentages below indicate completers' satisfaction with how well the EPP prepared them for teaching.

- 86.8% Clinical experience and coaching/mentorship
- 100% Coursework and faculty expertise/relationships
- 92.1% Overall preparation for teaching in their current school setting

- Source: 2018 Insights Tool

Completer Satisfaction Survey (scale of 1 - 5)

The EPP Completer Satisfaction Survey is designed to collect data about the completer's current position and the effectiveness of Bethel University's EPP in developing their competencies to be effective teachers. This survey has an 85.71% response rate.



Results indicate that completers felt prepared by the provider overall at a level of highly satisfied (4.5). According to the completers, the EPP's strength is the environment indicator in both coursework (4.60) and clinical experience (4.69).

BU



Student Life

Residence Halls



Heritage Hall

- Address: 110 Bethel Court
- Year Built: 2011
- Square Footage: 75,000
- # of Dorm Rooms: 398



McDonald Hall

- Address: 116 Bethel Court
- Year Built: 1959
- Square Footage: 21,099
- # of Dorm Rooms: 45



Prosser Hall

- Address: 157 Campus Drive
- Year Built: 2005
- Square Footage: 21,052
- # of Dorm Rooms: 96

Residence Halls



West Hall

- Address: 218 Bethel Court
- Year Built: 1967
- Square Footage: 19,423
- # of Dorm Rooms: 40



University Hall

- Address: 100 Wildcat Lane
- Year Built: 2010
- Square Footage: 53,688
- # of Dorm Rooms: 256



Wildcat Cove

- Address: 939 Main Street
- Year Purchased: 2005
- Square Footage: n/a
- # of Students Housed: 108
(upper class and grad students only)

Student Activities

Student Events and Activities

Each semester multiple student activities are scheduled by the Office of Student Activities. These activities have included:

- Capture the Flag
- Coffee Houses
- Corn Hole Tournaments
- Escape Rooms
- Field Day
- Game Nights
- Karaoke
- Minute to Win It
- Mobile Ninja Warrior Course
- Movie on the Lawn Nights
- Scavenger Hunts
- Silent Disco
- Study Breaks
- Talent Shows
- Trivia Nights
- Video Game Tournaments
- Water Slide Kickball
- Ultimate Frisbee
- Bethel's Got Talent
- Campus Feud
- Laser Tag
- Jackson Generals Night
- Power Puff Football
- Caricature Portraits
- Obstacle Courses
- Formal Dances
- Guest Speakers
- Picture Word Art
- Hypnotists / Mentalists



Student Organizations

Student Government

Each year the student body elects representatives to serve as part of the Student Government Association. This group gives voice to student concerns on various faculty and staff committees.



Honors Societies

Gamma Beta Phi, a national honor society, recognizes superior scholastic achievement and is composed of membership by invitation only to the top 20% of each class. The group participates in service projects and attends national conventions each year.



Greek Organizations

Bethel University offers multiple Greek sororities and fraternities. These groups participate in various community service projects and campus events throughout the year. Fraternities: Alpha Phi Alpha, Kappa Phi Rho, Kappa Sigma, Omega Psi Phi, Phi Beta Sigma, Phi Delta Sigma, Phi Mu Alpha, Zeta Delta Tau. Sororities: Beta Sigma Rho, Delta Phi Nu, Lambda Sigma, Zeta Nu Theta, Zeta Phi Beta



Academic/Social Organizations

Bethel University's many organizations that blend academic knowledge and social activities, and allow students the opportunity to practice what they learn in the classroom in a real-world environment including American Chemical Society, Beta Sigma Phi, Gama Beta Phi, and Student Tennessee Education Association (STEA). In addition, there are several service and special interest groups available such as Child Abuse Recognition Effort, Ignite CMI, Circle K, Reading Club, Scrivener, and Wesley Fellowship.



Christian Life

The campus chaplains strive to lead the campus community in living out this belief in many ways. Bethel works closely with the Cumberland Presbyterian denomination. The University supports Christian musical and dramatic presentations that are performed in individual churches and encourages student involvement with specific churches. We also provide facilities for continuing education opportunities within the denomination.



Other organizations represented on campus include: Cumberland Presbyterian Ministry, Baptist Collegiate Ministry (BCM), Bethel Wesley Fellowship, Christian Medical and Dental Association Student Chapter (CMDA), and Fellowship Christian Athletes (FCA). All students are welcomed and encouraged to participate in these organizations.

Weekly Worship Services:

In the Tuesday morning chapel services, ministers and speakers from different denominations are invited to preach. Bethel University works cooperatively with many different Christian denominations to meet students' needs.

Communion Services:

A weekly liturgical Holy Communion service is on Thursday mornings in the chapel. All are welcome to participate, but no one is required to partake in the elements. If non-Christians have questions about the faith, they are welcome to observe and be respectful as we worship. The Chaplain is available after services or during office hours to answer questions. Everyone is welcome to attend the services!

Chapel Requirements

A full-time traditional undergraduate freshman, sophomores, and juniors (including transfers and commuters) are required to attend the weekly worship services. This requirement can be fulfilled by attending Chapel service on Tuesdays and/or the Communion service on Thursdays.

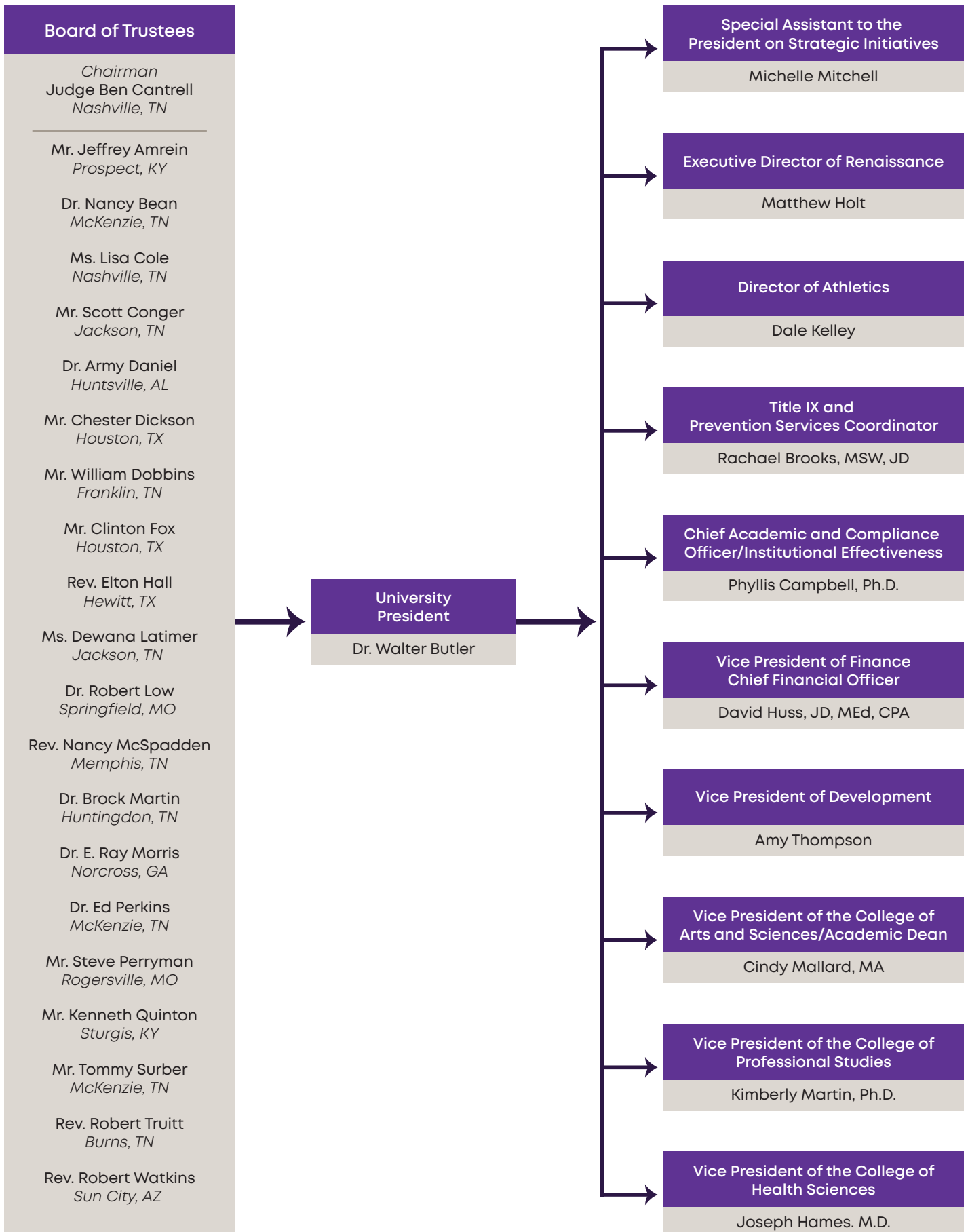
If students cannot attend the weekly services, they can give an hour of community service for each required worship service.

BU



Faculty
& Staff

University Organizational Chart



Administration

University Level



Office of the President

Rachael Brooks	Title IX and Prevention Services Coordinator
Walter Butler	University President
Linda Hern	Administrative Assistant
Vicky Williams	Executive Assistant to the President

Human Resources

Carolyn Dotson	Director of Human Resources
Marissa Griggs	Benefits Specialist
Pam Hornebuckle	Associate Director of Human Resources
Karen Phelps	Human Resource Payroll Specialist
Crystal Simon	Training and Development Coordinator

University Relations

Myra Carlock	Events Coordinator and Alumni Relations
Sean Hines	Web/Social Media Specialist
Terri Merrill	Graphic Designer/Special Projects Manager
Michelle Mitchell	Special Assistant to the President for Strategic Initiatives
Christiana Odum	Graphic Designer

Development

Dale Henry	VP of Development
Michelle Nail	Development Executive Coordinator
Brian Page	Community Relations Coordinator
Amy Thompson	Director of Development

University Library and Academic Achievement

Rhonda Allen	Public Service Supervisor
Brandon Campbell	Technical Services
Gera Roberts	Assistant Library Director Assistant PR
Sarah Sanders	Director of the Center for Academic Student Achievement
Jill Whitfill	Director of On-Campus Library Services

University Registrar

Becky Hames	University Registrar
-------------	----------------------

Compliance

Janie Amburgey	Institutional Reporting and Accreditation Analyst
Phyllis Campbell	Chief Academic/Compliance/Accreditation Officer
Jessica Martin	Accreditation/Live Text Coordinator
Lisa Tyler	Institutional Research

Security

Jerry Boone	Security Officer
Tavis Carr	Security Officer
Henry Carter	Security Officer
Mack Chambers	Security Officer

Administration

University Level



Samuel Cole	Security Officer
Matthew Foster	Security Officer
Rhonda Ross	Security Administrative Assistant
Daniel Thomas	Chief of Security
David Trotter	Security Officer
Allen Walls	Security Officer
Johnny Williams	Security Officer

Supplemental Services/Other Administration

Ruth Carroll	Insurance/Safety Coordinator
Lisa Gilliam	Switchboard Operator

Maintenance

Joel Burnine	Grounds Keeper
Steve Cude	Maintenance
Freddie Duke	Maintenance
Barbara Freda	Admin Assistant for Maintenance/Grounds
Alan Gooch	Maintenance
Farrell Hubble	Maintenance
Jerry Hutchens	Assistant Maintenance Director
John Maxwell, Jr.	Grounds Foreman
James Mayo	Maintenance
David Rush	Director of Grounds
Randy Tanaka	Maintenance Director

Housekeeping

Sandra Adams	Assistant Housekeeping Supervisor
Jamie Barker	Housekeeping
April Beard	Housekeeping
Lori Chandler	Housekeeping Supervisor
Montrie Eaton	Housekeeping
Donna Hubble	Assistant Housekeeping Supervisor
Judith Hubble	Housekeeping
Autumn Isbell	Housekeeping
Margie Morgan	Housekeeping
Becky Tanaka	Housekeeping
Ricky Wofford	Housekeeping

Office of Information Technology

Jimmy Bomar	IT Director
Jamie Coomer	Application Support Specialist
Mark Kelly	IT Network Administrator
Jarvis Northern	IT Help Desk Tech
Misty Price	IT Help Desk Tech
David Scarbrough	Application Support Administration
Gary Williams	Fire Life Safe/Access Con

Administration

University Level



Business Office

Toni Allen	University Billing Coordinator
Brooke Cary	Accounting Specialist
April Chace	University Billing Coordinator
Clay Cunningham	University Billing Coordinator
Lauren Cunningham	Director of Business Affairs
Michelle Ghyers	Administrative Assistant to the VP/CFO
Jack Holland	Business Office Compliance Coordinator
David Huss	VP of Finance/CFO
Jannette Jackson	University Billing Coordinator
Heather Mcgaw	Accounts Specialist
Wanda Merchant	Senior University Billing Coordinator
Tina Rawls	Accounting Specialist
Venissa Scott	BU Collections Coordinator
Regina Simpson	Director of Traditional & Modular Billing
Christina Sumner	Director of University Collections
Trina Vickers	Senior University Billing Coordinator

Financial Aid

Kim Borneman	Traditional Financial Aid Counselor
Brenda Bradshaw	Director of Traditional Financial Aid
Kayla Brasfield	Modular Financial Aid Counselor
Lori Brisendine	Modular Financial Aid Counselor
Amy Bynum	Traditional Financial Aid Counselor
Kim Callahan	Associate Director of Modular Financial Aid
Mark Cunningham	Modular Financial Aid Counselor
Rosa Dabbs	Senior Modular Financial Aid Counselor
Karen Hutson	Senior Modular Financial Aid Counselor
Cassandra Johnson	Traditional Financial Aid Counselor
Brandi Lee	Director of Modular Financial Aid
Crystal Legens	Associate Director of Modular Financial Aid
Seth Martin	Executive Asst VP Finance/CFO Special Projects
Tiffany McCutcheon	Senior Modular Financial Aid Counselor
Amanda Ninness	University Financial Aid Loan Originator
Sherri Priestley	Modular Financial Aid Counselor
Rachel Sawyers	Modular Financial Aid Counselor
Cheri Wharton	Traditional Financial Aid Counselor
Sarah Wimberly	Modular Financial Aid Counselor

Office of the Chaplain

Garret Burns	University Associate Chaplain/Community Engagement
Anne Hames	University Chaplain

Fitness Center

Ray Watkins	Fitness Center Manager
-------------	------------------------

Administration

College of Arts and Sciences



Bookstore & Mail Room

Elizabeth Cook	BU Mailroom Manager
Christy Hampton	Bookstore Manager
Jana Higdon	Assistant Bookstore/Mailroom Manager

Office of the Vice President & Academic Dean

Kathy Gearin	Executive Administrative Assistant to CAS VP
Cindy Mallard	Vice President College Arts and Sciences/Academic Dean

Renaissance Performing Arts Program

Sarah Allen	Director Renaissance Choir
Bala Boyd	Associate Director Renaissance Theatre
Keith Cottrill	Director Renaissance Regiment
Aubrey Doyle	Director Renaissance Theatre
Ryan Griffin	Director of Renaissance Relations
Elyse Henderson	Renaissance Administrative Assistant
Shelby Hennis	Renaissance Technical Assistant
Matthew Holt	Renaissance Executive Director
Daniel Howell	Renaissance Tech Director
Tremayne Johnson	Director of Renaissance Percussion
Connie McCain	Associate Director Renaissance Choir
Kevin Moore	Associate Director of Renaissance Vocal

Division of Education

Michael Poore	Co-Director of Education
Robin Salyers	Co-Director of Education
Sandra Smith	Associate Director of Enrollment Services
Alanna Williams	Associate Director of Student Services/Advisor

Dual Enrollment

Amber Gregson	Program Advisor Financial Aid Dual Enrollment
Kimberly Houston	Dual Enrollment Admissions
Craig Lunn	Director of Dual Enrollment

Admissions/Enrollment Services

Lisa Andrews	In-House Recruitment
Brad Borneman	Recruiter
Ryanna Branham	Recruiter
Traci Crawford	Recruiter
Terri Delaney	Registration Coordinator
Hayle Fuller	Enrollment Coordinator
Mallory Gutowski	Recruiter
Tina Hodges	Assoc Director of Admissions
John Norwood	Direct of Recruitment and Admissions
Shannon O'Mayes	International In-House Recruiter
Ellen Pruitt	Administrative Assistant

Administration

College of Arts and Sciences



Brittany Twilbeck
Dorothee Watson
Jared Williams

In-House Recruitment
Recruiter
Recruiter

Registrar

Michelle Fussell
Deborah Noble
Natasha Parker
Karen Saldana

Records Clerk
Registrar
Assistant Registrar
Assistant Registrar

Student Services/Student Life

Mandy Brewer
Jane Campbell
Tan Gee Deem
Sandra Loudon
Katie McGill
Emily Myers
James Stewart
Janice Wilcox
Janae Young

Director of Student Activities
International Student Coordinator
VA and Disability Services Coordinator
Assistant Dean Freshman Year Experience
Director of Greek Life/Intramurals
Director of Career Services & Sophomore Counselor
Dean of Student Development
Student Development Office Manager
Director of Clinical Services

Residence Life

Aaliyah Albea
Peggy Carter
Alyssia Easley
Will Gibson
Madeline Gray
Kerry Lucas Adkison
Nicholas Roberts

Resident Director – University Hall
Director of Residence Life & Housing
Resident Director – Heritage Hall
Resident Director – Prosser Hall
Resident Director – West Hall
Resident Director – Wildcat Cove
Resident Director – Prosser Hall

See Athletics Section for Athletics Staff List

Administration

College of Health Sciences



Office of the Vice President

Joseph Hames

Vice President of the College of Health Sciences

Administration/Student Health

Jack Allison

Medical Director

Christine Esch

Administrative Assistant/Immunization Coordinator

Deborah Noble

Registrar

Karen Saldana

Assistant Registrar

Nursing Program

Ginger Evans

Nursing Office Manager

Jason Hypes

Campus Lab/Simulation

Jenny Webb

Nursing Program Director/Assistant Professor of Nursing

Physician Assistant Program

Sandy Atwill

Associate Director/Recruiter

Amby Gulish

BU PAP Recruiter

Stacey Lewis

PA Administrative Coordinator

Andrea Parrish

PA Clinical Coordinator

Janet Peeler

PA Academic Coordinator

Trent Scates

PA Program Director/Associate Professor

Athletic Training Program

Nikki Holland

AT Program Director

Administration

College of Professional Studies



Paris Satellite Campus

Office of the Vice President

Sally Daniel	Administrative Assistant
Kimberly Martin	Vice President of the College of Professional Studies
Ashley Webb	Director of Strategic Communications

Academic Affairs

Cindy Gurley	Academic Affairs Coordinator
Lisa Vaughn	Academic Dean/Facilitator
Patti Vinson	Director of Academic Affairs

Admissions/Enrollment

Kristy Milan	Admissions Counselor
--------------	----------------------

Student Advisors

Renee Akers	Lead Advisor
Sherrye Hudson	Senior Advisor Misty Mazzie
Kensley VanDyke	Advisor

Online Library & Learning Services

Leslie Henegar	Learning Services Support
Lauren McCoy	Distance Education Librarian

Recruitment

Catherine Foster	Recruiter
Brittany Morgan	Recruiter

Registration

Angela Alexander	Registration Coordinator
Elana Fowler	Registration Coordinator
Lisa Stephens	Registration Coordinator
Jesse Joyner	Registration Supervisor
Kristie Freeman	Scheduler
Anastasia Love	Scheduler/Bookstore Coordinator

Clarksville Campus

Student Advisors

Julie Daniel	Lead Advisor
Cassie Pence	Advisor
Lisa Rice	Advisor

Military/Veterans

Sylvana Matthews	Military & Veterans Affairs
LaTara Hopson	VA Benefits Coordinator
Alice Sanborn	Veteran Clerk

Administration

Professional Studies



Registrar

John Hinds	CPS Registrar
Lynnsha Howard	Records Clerk
Pam Jenkins	Associate Registrar
Kari King	Records Clerk
Kayla Martinez	Interim CPS Registrar
Timberley Russell	Transcript Evaluator
Tara Suiter	Transcript Evaluator

Recruitment

Terry Morris	Recruiter
Lance Tasker	Recruiter/Interim Director

Jackson Campus

Student Advisors

Brad Moore	Senior Advisor
Latoya Rutherford	Advisor
Karen Transou	Senior Advisor

Recruitment

Patrick Adams	Recruiter
Rick Bankey	Recruiter
Howard Burns	Recruiter
Viktor Horton	Recruiter

Administration

Pam Hornbuckle	Associate Director of Human Resources
----------------	---------------------------------------

Memphis Campus

Student Advisors

Danica Wilks	Advisor
Carmellia Wright	Advisor
Jacob Zvolanek	Lead Advisor

Recruitment

Terika Anderson	Recruiter
Alexis Griggs	Recruiter
Kimberly Nichols	Recruiter

McKenzie Campus

Academic Affairs

Lorey Basford	Associate Director of Academic Affairs
---------------	--

Recruitment

Mikki McLeary	Recruiter
---------------	-----------

Nashville Administrative Office

Student Advisors

Rebecca Henson	Student Services Representative
Rachel Jones	Advisor
Amanda Myers	Director of Advising
Lamerle Thomas	Senior Advisor
Jenn Torrence	Senior Advisor

Admissions/Enrollment

Whitney Bennett	Admissions Counselor
Annetta Bevill	Director of Student Services & Admissions
Jessica Gayters	Admissions Counselor
Jessie Lewis	Admissions Counselor

Library

Jen Held	Distance Education Librarian
Elizabeth Park	Director of Online Library Services

Recruitment

Gina Willis	Director of Recruitment/Facilitator
Matt Evans	Recruiter
Daniel Keeton	Recruiter
Barry McBride	Recruiter

IT/Help Desk

Quin Ewaldson	Senior IT Help Desk
---------------	---------------------

Chattanooga Administrative Office

Student Advisor/Admissions

Susan Bailey	Senior Advisor
--------------	----------------

Recruitment

Lisa Pepper	Recruiter
-------------	-----------

Outreach

Recruitment

Nicole Blevins	East TN, Recruiter
Jackie Puckett	Kentucky, Recruiter

Admissions/Enrollment

Tabitha Moore	East TN, Admissions Counselor
---------------	-------------------------------

Full-Time Faculty

College of Arts and Sciences



William Atkins (2018)

Visiting Instructor of Mathematics

B.S., Bethel University

M.S., Murray State University

Kathleen Baczynski (2014)

Assistant Professor of Biology

A. S., Luzerne County Community College

B.S., College Misericordia

M.S., University of Maryland

Ph.D., Bowling Green State University

Rosetta Burford (2016)

Associate Professor of Special Education

B.S., M.Ed., University of Tennessee (Martin)

Ed.D., University of Mississippi

Christopher T. Burket (2007)

Professor of Biology

B.S., Manchester College

M.S., Ball State University

Ph.D., Worcester Polytechnic Institute

John M. Buteyn (2014)

Assistant Professor of Music

B.A., B.S., Houghton College

Master of Music, Georgia Southern University

Morgan G Butler (2018)

Instructor of Education

B.S., Bethel University

M.S., Bethel University

Daniel Cantey (2012)

Associate Professor of Religion

B.A., Davidson College

M.Div., Yale Divinity School

Ph.D., Emory University

Jon T. Carlock (1993)

Professor of Religion and Philosophy

Hannibal Seagle Bible Chair

B.A., Bethel University;

M.Div., D. Min., Vanderbilt University

Sabrina Chambers (2011)

Assistant Professor of English

B.S., Tennessee Technological University

M.A., East Tennessee State University

M.A.Ed., Bethel College (McKenzie, TN)

Catherine C. Clark (2011)

Associate Professor of History

B.S., Bethel University

M.A., Murray State University

Brad A. Cliff (2012)

Division Chair of Health and Physical Education

Associate Professor of Health, Physical Education

B.S., M.S.Ed., Ph.D., Middle Tennessee State

University

Jason Cole (2011)

Associate Professor of Art

B.A. Bethel University

M.F.A. Memphis College of Art

Thomas Crawford (2014)

Assistant Professor of Psychology

B.S., Georgia College and State University

Ph.D., Arizona State University

Alan Cross (1998)

Professor of Music

B.S., University of Houston

M.C.M, Southwestern Baptist Theological
Seminary

M.M., D.M.A., University of Southern Mississippi

D.J. Culp, Jr. (2016)

Instructor of Music

B.M., M.M.E., Murray State University

Daniel A. Dalrymple (2009)

Associate Professor of History

Director of Honors Program

B.A., Ph.D., Michigan State University

Full-Time Faculty

College of Arts and Sciences



Randolph O. Day (1993)

Associate Professor of Business Administration and Accounting

B.S., East Tennessee State University
M.B.A., The University of Tennessee

Joseph Alex Debonis (2009)

Associate Professor of English

B.A., Indiana University
M.A., Illinois State University
Ph.D., University of Cincinnati

Ronald Lynn Deming (1996)

Professor of Computer Information Systems

A.A., University of New York
B.S., Southern Illinois University
M.A., Webster University
Ph.D., Capella University

Lindsay D. Elliott (2007)

Associate Professor of Health & Physical Education

B.S., Belmont University
M.A., Tennessee Technological University

Andrew Evans (2014)

Assistant Professor of Chemistry

B.S., Bradley University
M.S., Purdue University
Ph.D., Arizona State University

Stacie D. Freeman (2005)

Associate Professor of Sociology

B.S., The University of Tennessee at Martin
M.S.W., The University of Tennessee

Shannon Godwin (2007)

Professor of Education

B.S., Florida State University
M.Ed., Trevecca Nazarene University
Ed.S., Ed.D., Union University

Morgan Goulding (2014)

Assistant Professor of Biology

B.S., The Evergreen State College
Ph.D., The University of Texas at Austin

Marion Elaine Graham (2003)

Professor of Speech and Theatre

B.A., Geneva College;
M.F.A., Northern Illinois University

Audrey Hamilton-Shelton (2016)

Assistant Professor of Speech and Theatre

B.F.A., Mississippi University for Women
M.A.T., The University of West Alabama
M.F.A., The University of Alabama

Stephen E. Haynes (2014)

Associate Professor of Speech and Theatre

A.S., Columbia State Community College
B.S., Austin Peay State University
M.F.A., Louisiana State University

Keith Herris (2006)

Division Chair of Music and Religion Professor of Music

B.A., Goshen College;
M.M., University of Oklahoma
D.M.A., Michigan State University

William Paul Hetrick (1998)

Associate Professor of Business Administration

B.S., M.B.A., Youngstown State University
A.B.D., University of Kentucky

Robert Hicks (2004)

Associate Professor of Accounting

B.S., M.Ac., The University of Tennessee at Martin

Junior Hopwood (2017)

Assistant Professor of Sociology

B.S., M.S., University of The West Indies
Ph.D., Howard University

Steve Isbell (2012)

Associate Professor of C.I.S. and Business

B.S., Bethel University
M.B.A., TUI University

Full-Time Faculty

College of Arts and Sciences



Jeffery L. Johnson (2017)
Assistant Professor of Sociology
B.S., Shippensburg University
M.A., Ph.D., George Mason University

Roger C. Johnson (1980)
Professor of Physics and Computer Science
A.B., Augustana College
M.A., DePauw University
Ph.D., University of Iowa

Sarah Keller (2015)
Assistant Professor of Biology
B.S., M.A.Ed., Bethel University
Graduate Study, Clemson University

Sarah Kidd (2003)
Division Chair of Social Sciences
Professor of History
B.A., M.A., University of Alabama-Huntsville
Ph.D., University of Missouri

Joshua J. Klaassen (2015)
Assistant Professor of Chemistry
B.S., Nebraska Wesleyan University
Ph.D., University of Missouri Kansas City

Alex Klyuyenko (2011)
Associate Professor of Physics and Mathematics
M.S., Kirovohrad, Ukraine Institute of Agricultural
Machine Construction

Roy David Lancaster (2004)
Professor of Religion
B.A., Bethel University
M.Div., Yale University Divinity School

Timothy W. Lindsey (2003)
Professor of Human Services
B.S., Bethel University
M.S.W., Louisiana State University (LCSW)

Sandra L. Loudon (1992)
Director of College Orientation / Lecturer of COE
B.S., Murray State University
M.A.Ed., Bethel University

Cindy Mallard (1999)
Associate Professor of English
B.A., Bethel University;
M.A., The University of Memphis

Jennifer Marlow (2014)
Assistant Professor of History
B.A., Saginaw Valley State University
Ph.D., Michigan State University

James McAllister (2011)
Professor of Biology
B.A., University of Massachusetts at Amherst;
M.A., M.Phil., Ph.D., University of Kansas

Karen McCaleb (2016)
Instructor of Education
B.U.S., University of Tennessee (Martin)
M.A.Ed., Bethel University

Charles F. McConnell (2009)
Associate Professor of Psychology
A.S., Dyersburg State Community College
B.A., M.S., Ph.D., The University of Memphis

Sara M. McIntosh (2012)
Associate Professor of English
B.A., The University of Tennessee at Martin
M.A., Murray State University

Jaime McLean (2011)
Associate Professor of History
B.A., University of Windsor
Ph.D., Michigan State University

Meagan Meacham (2018)
Instructor of Business and Accounting
B.S., University of Tennessee at Martin
M.Acc., Middle Tennessee State University

Alacia Mitchell (2011)
Associate Professor of Business
B.S., Bethel University;
M.B.A., Lakeland College

Full-Time Faculty

College of Arts and Sciences



Victoria Moeller (2010)
Associate Professor of Chemistry
B.S., M.S., St. Louis University
Ph.D., Ohio State University

Antonio Morton (2017)
Assistant Professor of Speech and Theatre
B.F.A., Western Kentucky University
M.F.A., University of Louisville

John P. Nelson (1992)
Professor of Biology
B.A., Lycoming College
M.S., University of North Dakota
Ph.D., The University of Memphis

Carleton A. (Tony) Palmer (2017)
Assistant Professor of Psychology
B.A., Furman University
M.S., University of North Carolina (Chapel Hill)
Ph.D., University of North Carolina (Chapel Hill)

James D. Pask (2013)
Assistant Professor of Biology
B.S., Lynchburg College
Ph.D., Vanderbilt University

Brian E. Paulis (2012)
Associate Professor of Music
B.M., Baldwin-Wallace College
M.M., New England Conservatory of Music
Ph.D., Kent State University

Michael Poore (2014)
Professor of Education
Associate Professor of Education
B.S., M.S., University of Tennessee at Martin
J.D., Nashville School of Law

Janet Reid (2003)
Professor of Education
B.A., M.A., Ph.D., Mississippi State University

Jeremy R. Ricketts (2012)
Associate Professor of English
B.A., University of Memphis
M.A., University of Alabama;
M.Ed., University of South Florida
Ph.D., University of New Mexico

Jessica Roberson (2008)
Division Chair of Humanities
Associate Professor of English
B.A., Bethel University
M.A., Southeast Missouri State University
Sara McKeehan Hakim Rognstad (2012)
Professor of Mathematics
B.A., Gonzaga University
M.S., Ph.D., Washington State University

Teresa G. Rose (2004)
Associate Professor of English
B.S., M.A., Murray State University
A.B.D. University of Mississippi

Todd A. Rose (2009)
Associate Professor of Criminal Justice
B.S., Murray State University
J.D., Vanderbilt University

Robin Salyers (2014)
Co-Director of Education
Professor of Education
B.S., M.A.Ed., Bethel College
M.S.I.T.M., Touro University
Ph.D., Northcentral University

Bryan Sandor (2017)
Assistant Professor of Mathematics
B.S., B.S., University of Tennessee (Martin)
M.S., Western Kentucky University
M.A., University of Kentucky
M.A., Ph.D., University of Alabama

Full-Time Faculty

College of Arts and Sciences



Joseph A. Sam (1991)

Division Chair of Natural Sciences & Mathematics
Professor of Chemistry

B.A., University of Mississippi

Ph.D., University of Mississippi Medical Center

Poppy Scarbrough (2012)

Associate Professor of Art

B.A., University of Illinois, Springfield

M.F.A., San Francisco Art Institute

James A. Scruton (1990)

Professor of English and Mary B. Holmes Professor
of Literature

B.A., M.A., Eastern Illinois University

Ph.D., The University of Tennessee

Sharon K. Scruton (1990)

Associate Professor of English

B.A., M.A., Eastern Illinois University

William J. Shelton, Jr. (1993)

Associate Professor of Spanish and English

B.A., M.A., Murray State University

M.A., The University of Memphis

Beth Sisson (2016)

Instructor of Special Education

B.S., M.Ed., Bethel College

Irina Smith (2003)

Associate Professor of Mathematics

B.S., Moscow Regional Pedagogical University

M.S., Murray State University

M.B.A., Bethel University, 2009

Tony L. Smith (2004)

Professor of Music Business

B.A., Jackson College of Ministry

M.A., Ed.D., Trevecca Nazarene University

Christopher Stampone (2018)

Assistant Professor of English

B.A., State University of New York College at
Buffalo

M.A., Brock University

Ph.D., Southern Methodist University

Hector Tato (2013)

Associate Professor Criminal Justice

A.A., Miami Dade College

B.A., Florida International University

Ph.D., Universidad del Norte (Columbia)

Christopher R. Terry (2009)

Associate Professor of Mathematics

B.S., Bethel University

M.A., Murray State University

Malissa L. Vaughn (2000)

Associate Professor of Health, Physical Education

B.S., Lambuth University

M.S., The University of Memphis

Mark Walton (2016)

Assistant Professor of Health and Physical
Education

B.S., M.S., Arkansas State University

Ed.S., ABD, Middle Tennessee State University

Jeffrey A. Wilcox (2012)

Associate Professor of Religion

B.A., Calvin College

M.T.S., Calvin Theological Seminary

Ph.D., Marquette University

Kathryn Wilwohl (2013)

Professor of Biology

B.S., Saint Francis University

Ph.D., Temple University

Randell Wolff (2005)

Associate Professor of English

B.A., Bethel University

M.A., Murray State University

Full-Time Faculty

College of Arts and Sciences



Faculty Emeriti

John J. Caterina (2000)
Professor of Biology
B.A., Saint Anselm College
Ph.D., University of Alabama at Birmingham

Howard L. Freeman (1979)
Professor of Biology
B.S., Fairleigh Dickinson University
M.A., University of Kansas
Ph.D., Rutgers University

Russell D. Holder (1989)
Associate Professor of Mathematics
B.S., M.A. Truman State University

J. Pratt Hubbard (1992)
Professor of Speech
B.A., LaGrange College
B.T.A., Pasadena Playhouse
M.F.A., Ed.D., University of Georgia

David H. Lankford (1967)
Associate Professor of Mathematics
B.S., Bethel University
M.S., University of Mississippi
Graduate Study, The University of Mississippi &
The University of Tennessee

Shirley Martin (1970)
Registrar
B.S., Bethel University

Benjamin G. McClure (1989)
Professor of Education
B.S., Middle Tennessee State University
M.Ed., University of Georgia
Ed.D., George Peabody College for Teachers at
Vanderbilt University

Linda Rains McClure (1989)
Professor of Education
B.S., Cumberland College
M.A., Union College;
Ed.D., The University of Tennessee

Maribeth McGuire (1985)
Associate Professor of English
B.A., Bethel University
M.A., The University of Memphis
Doctor of Letters, Bethel University

Cornelia A. Arnold Owen (1980)
Professor of Special Education
B.A., Bethel University
M.S.Ed., The University of Tennessee at Martin
Ed.D., Vanderbilt University

Kathleen B. Sacks (1979)
Associate Professor of Art
B.S., M.A.Ed., Bethel University
Graduate Studies, Memphis College of the Arts
The University of Memphis and The University of
Tennessee at Martin

Deborah K. Thompson (1982-2001) (2002)
Professor Health, Physical Education
B.S.Ed., Kent State University
M.A., The Ohio State University
Ed.D., University of Arkansas

Athletic Training Program Faculty

L. Katie Delinsky, ATC, LAT (2015)
Instructor, Lab Coordinator

B.S.A.T., North Georgia College & State University
M.S. Lamar University

Dr. Nikki Holland, PT, ATC, LAT (2013)
Program Director

B.S., Murray State University
D.P.T., Belmont University

Stephanie Watkins, M.Ed. (2014)

Instructor, Academic & Admissions Coordinator

A.A.S., Paducah Community & Technical College

B.A., University of Tennessee-Martin

M.Ed., Bethel University

Department Of Nursing Faculty

Dayna Edwards (2009)

Associate Professor

A.S., Young Harris College

B.S.N., Medical College of Georgia

M.A., Tennessee Technological University

Ashley Johnson (2012)

Assistant Professor

B.S.N., University of Tennessee at Martin

M.S.N., Murray State University

Holly Kimbrell (2012)

Assistant Professor

B.S.N., University of Alabama Birmingham

M.S.N., D.N.P., University of Alabama Huntsville

Delecia Parker (2011)

Assistant Professor

A.A., A.S., Pensacola State College

B.S.N., M.S.N., Florida State University

Jenny Webb (2010)

Program Director, Associate Professor

B.S.N., University of Tennessee at Martin

M.S.N., Union University

PhD, University of Tennessee at Knoxville

Physician Assistant Program Faculty

Darlene Adams, PA-C (2015)
Assistant Professor
MPAS, University of Nebraska

J.R. Allison, M.D. (2011)
Medical Director, Assistant Professor
B.S., Memphis State University
M.D., University of Tennessee-Memphis

Daniel Patrick Brown
Assistant Professor
B.S., Bethel University
M.S.P.A.S., Bethel University

Kate Cummings, PA-C (2013)
Assistant Professor
B.S., Bethel College
M.S.P.A.S., Bethel University

Joseph Hames, M.D. (1999)
Vice President/Academic Dean, Associate
Professor
B.A., Furman University
M.D., University of South Carolina

Christy Lankford, PA-C (2015)
Assistant Professor
B.S.N., Bethel College
M.S.P.A.S., Bethel University

Cindy Laux, PA-C (2013)
Assistant Professor
M.S., Kansas State University
M.S.P.A.S., Bethel University

Eugene Platt, PA-C (2017)
Assistant Professor
MSPAS, Bethel College

David Roberts
Assistant Professor
B.S.N., Union University
PA-C, MSPAS Bethel University

Michael T. Scates, PA-C (2014)
Program Director
B.S.P.A.S., Trevecca Nazarene University
B.S., University of Tennessee-Martin
M.S.R.P.C., Alderson-Broadbudd College

Kerri Smith, PA-C (2011)
Associate Director, Academic Director, Assistant
Professor
B.S., University of Southern Mississippi
M.S.P.A.S., Bethel College

Jeff Wilbert, PA-C (2013)
Assistant Professor
B.S., Bethel College
M.S.P.A.S., Bethel College

— PA Program Adjunct Faculty —

Paul Brinkman, PA-C

Gregory Fryer, M.D.

John Nuss, PA-C

Debra Selby, M.D.

Full-Time Faculty

College of Professional Studies



Undergraduate Faculty

Adela Janie Amburgey	Donald Demoulin	Roderick Leupp	Jadrea Romines
Charles Anderson	Marcia Dickerson	Lauren McCoy	Chris Rose
Devon Anderson	Keith Eason	Tiffany McCutcheon	Tracy Sipma
Mary Jane Andrews	Catherine Foster	Thomas McDonald	Anthony Skipper
Susan Bailey	Brett B. Gardner	Carrie Miller	Tony Smith
Lorey Basford	James Hampton	Diane Minger	Magdalena Soklowski
Annetta Bevill	William Harwood	Alacia Mitchell	Bruce Steele
Darrell K Bevill	Leslie Henegar	Brad Moore	Dennis Trull
Dorothy Black	Jennifer Hensley	Douglas Newson	Helen Cynthia Tubb
Vicky K. Black	Johnny W Hinds	Lisa Norris	Sila Tuju
Rachel Blackwood	John Hitz	Yemi Owolabi	Ivyia Turner-Echols
James D. Blasick	Andrew Holt	Joan Papes	Butch Varner
John Blumer	Donald Hornbuckle	John Petrov	Lisa K. Vaughn
Kathryn Broyles	Pamela D. Hornbuckle	Daniel Pigg	Katherine M Vest
Karen Cavaness	Steve Isbell	Jason Poore	Patti Vinson
Cynthia L Chambers	Gina Jackson	Deborah Johnson	Dale Williams
Molly Coffman	Allison Keane	Paul Redden	Allen Willis
Norman L Curtiss	Caleb Kersey	Jacqueline Riddle	Regina Willis
Sandi Deming	Angelo Lamar	Larry D. Ridley	Daniel Young

Master of Business Administration Faculty

Danielle Babb	Linda Joyce Gunn	Nassar S Nassar	Lisa Tyler
Mark Bell	Melissa Hickman	Stephen Pew	Shea West Slonaker
Phyllis Campbell	Michael Kenny Holt	Jeff Snodgrass	
Ron Deming	Kimberly A LaFevor	Gail Southwell	
Gregory Evans	Stephen Langston	Tracy Tuten	

Criminal Justice Faculty

George Ackerman	Kelley Cronin	Jeremy Francis	Barry Michael
Gerald Beavers	Mark Cunningham	Kevin Genovese	Michael Miller
Cynthia Bowker	Patricia Drown	Theresa Grisham	Mark Murtha
Joyce Brooks	Keith Edwards	Kenneth Jones	Michael Pittaro
Edmond Cepparulo	Jimmy Farris	Michael Kane	David Rausch
David T Corley	Jerry Findley	Daniel Keeton	Wendy Williams

BU



Athletics

Athletic Activities

Intercollegiate Athletics

Intercollegiate Athletics have become an important and exciting aspect of life for the many students, alumni, and community friends of the University who support Bethel's teams. As members of the National Association of Intercollegiate Athletics (NAIA), the Wildcats and the Lady Wildcats regularly compete against many top-rated teams. The men's program has teams in basketball, baseball, bass fishing, bowling, cheer, cross-country, football, golf, in-line hockey, shooting, soccer, swimming, tennis, and track. The women's program has teams in basketball, bass fishing, bowling, cheer, cross country, golf, softball, soccer, shooting, swimming, tennis, track, and volleyball.

Intramural Athletics

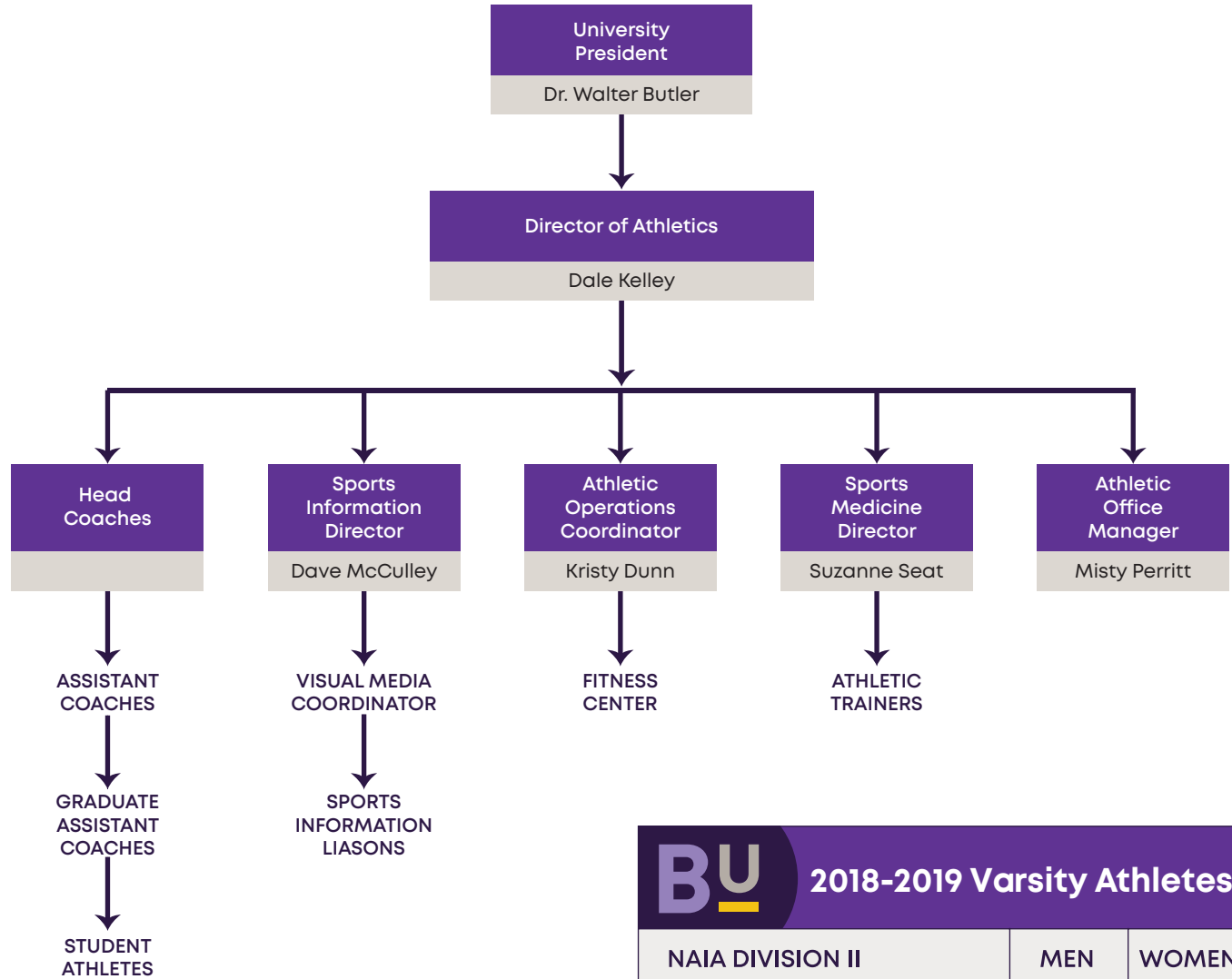
Intramural sports offer a variety of competition for the enjoyment of Bethel students, faculty, and staff. The program promotes enthusiasm, leadership, and good sportsmanship. The use of student directors, captains, coaches, and game officials creates a uniquely student-oriented program. Regulations for participation may be found in The Log.

Exercise and Fitness

Students are invited to exercise daily at the Wildcat Health and Fitness Complex, which features cardio and strength training equipment, and at the Gaines Indoor Pool.



Athletics Organizational Chart



Wildcats

All Bethel University sports teams support a total of 740 athletes.

BU 2018-2019 Varsity Athletes

NAIA DIVISION II	MEN	WOMEN
All Track Combined	23	12
Baseball	28	–
Basketball	18	17
Bowling	8	8
Football	74	–
Golf	4	3
Soccer	25	25
Softball	–	19
Swimming	7	5
Tennis	6	5
Volleyball	–	13
Total Participants	193	107
Unduplicated Count	193	107

Administration

Athletics



Administration

Brad Chappell	Senior Associate Athletic Director
Kristy Dunn	Athletic Operations Coordinator
Cristy Holland	Student Insurance Coord
Dale Kelley	Director of Athletics
David McCulley	Sports Information Director
Zachary O'Kelley	Director of Wildcat Vision
Misty Perritt	Athletics Office Manager/NAIA Eligibility
Suzanne Seat	Sports Med Director

Trainers

Shelbi Cameron	Staff Athletic Trainer
William Essary	Staff Athletic Trainer
David Holsinger	Staff Athletic Trainer
Lacey Jones	Staff Athletic Trainer
Matthew Robinson	Staff Athletic Trainer

Coaches

Archery:

Kenny Loudon	Head Coach – Archery
Joella Bates	Assistant Coach – Archery (2018)

Baseball:

Rusty Thompson	Head Coach - Baseball
Nicolas Thompson	Assistant Coach - Baseball
Lee Whitaker	Assistant Coach - Baseball

Basketball:

Jeff Britt	Head Coach – Men's Basketball
Chris Nelson	Head Coach – Women's Basketball
Aaron Johnson	Assistant Coach – Men's Basketball
Meagan Price	Assistant Coach – Women's Basketball
Jonathan Stanley	Assistant Coach – Men's Basketball

Bass Fishing:

Garry Mason	Head Coach - Bass Fishing
Kenny Loudon	Assistant Coach – Bass Fishing

Bowling:

Dustin Boyd	Head Coach - Bowling
-------------	----------------------

Cheer:

Catherine Carr	Head Coach – Cheer
----------------	--------------------

Administration

Athletics



Cross Country/Track & Field:

Brandon Kilburn
Wesley Bradshaw

Head Coach - Track & Cross Country
Assistant Coach - Track & Cross Country

Football:

Brent Dearmon
Mike Jasper
Bradley Baines
Morgan Cruce
Richard Hutchings
Dustin Kincaid
Cody McCallister
Luke Roth
Christopher Springer
Jonathan Wallace
Kevin Wewers

Head Coach - Football (2018)
Head Coach - Football (2019)
Assistant Coach – Football TightEnd/HBack
Assistant Coach – Football Running Backs (2018)
Assistant Coach – Football Offensive Line
Assistant Coach – Football Defensive Backs
Assistant Coach – Football / Defensive Backs
Associate Head Coach – Football /SpecialTeam
Assistant Head Coach – Football /Defense Coordinator
Assistant Coach – Football Wide Receivers (2018)
Assistant Coach – Football Offensive Coordinator

Golf:

Aurelio Geraldini

Head Coach - Golf

In-Line Hockey:

Ryne Potts

Head Coach – Inline Hockey

Soccer:

Misty Aird
Malang Jarju
Rene Njikang Enang
Tashana Taylor

Head Coach - Women's Soccer
Head Coach - Men's Soccer
Assistant Coach - Men's Soccer
Assistant Coach - Women's Soccer

Softball:

John Weeks
Elantra Cox

Head Coach - Softball
Assistant Coach - Softball

Shooting Sports:

Thomas Edwards

Coach Head - Shooting

Swimming:

Kayci Rezac

Head Coach - Swim

Tennis:

Derrick Hubble

Head Coach - Tennis

Volleyball:

Starla Cupples

Coach – Women's Volleyball

Intercollegiate Awards & Recognitions 2018-19

Year in Review

40 student-athletes named conference players of the week in the year

104 athletes were named to various academic all-conference teams

88 students were named to all-conference squads

23 Bethel student-athletes were named NAIA Scholar-Athletes

20 athletes made various All-American teams

4 coaches were named Coach of the Year in their respective conferences

9 student-athletes were named players of the year in their respective sports

As a part of the NAIA Champions of Character Initiative, members of every single sport at Bethel aided local events, organizations and charities of some type in the NAIA Champions of Character program this past year. As a member of the National Association of Intercollegiate Athletics (NAIA), Bethel University participates in the Association's Champions of Character program each year and has been recognized as a Five-Star Member. Likewise, the Southern States Athletic Conference has been recognized as Five-Star Conference. The program is built upon five core values, which are: Respect, Responsibility, Integrity, Servant Leadership, and Sportsmanship.



Source: BU Sports Information Department

BU



Financial Aid

Financial Aid Overview

Total grant aid received by all undergraduate students \$30,732,380
 Number of undergraduate students who received a Pell Grant2,371
 Percentage of First Time - Full Time (FTFT) students receiving any financial aid100%

FTFT Students Receiving Grant Aid by Type

	Percent of FTFT students receiving grant	Average amount of grant aid received
Total	98%	\$15,232
Federal Government	70%	\$4,956
Pell	70%	\$4,782
Other Federal	28%	\$429
State/Local Government	67%	\$4,880
Institutional	85%	\$9,663

FTFT Students Receiving Loans by Type

	Percentage of FTFT students receiving loans	Average amount of loans received
Total	84%	\$5,730
Federal	84%	\$5,571
Non-federal	2%	\$8,142

Average net price for FTFT students who receive grant aid\$15,018

Average net price for FTFT students who receive Title IV federal student aid

\$0 – 30,000\$14,932
 \$30,001 – 48,000 \$15,131
 \$48,001 – 75,000\$17,282
 \$75,001 – 110,000 \$18,134
 \$110,001 and more \$18,233

Military Servicemembers and Veteran's Benefits

	Number of students receiving benefits/assistance	Total dollar amount of benefits/assistance awarded through the institution
Post-9/11 GI Bill Benefits		
Undergraduate students	293	\$1,404,260
Graduate students	56	\$356,749
Total	349	\$1,761,009
Department of Defense Tuition Assistance Program		
Undergraduate students	50	\$122,375
Graduate students	6	\$11,500
Total	56	\$133,875

Resource: National Center for Education Statistics (NCES), IPEDS 2018-2019

Average Student Loan Debt

Bethel University’s average student loan debt for graduating undergraduate students is higher than the national loan debt and higher than the Tennessee student debt. The state loan debt averages are based on Public and Private Not-for-Profit schools. Public schools have a considerable lower tuition costs than Private Not-for-Profit schools causing the average loan debt to be naturally lower than Private schools. Bethel continuously strives to advise students to keep their loan debt as low as possible. Due to the low income area where Bethel is located, students have to borrow to help cover daily living expenses outside of school that parents do not have the income to provide causing the slightly higher average loan debt for our students.

Average Undergraduate Student Loan Debt Per Student Who Borrowed Federal and Private Student Loans and Graduated			
Academic Year	Bethel University Average	Tennessee Undergrad Average	National Undergrad Average
2014-15	\$31,852	\$26,083	\$30,100
2015-16	\$32,074	\$26,981	\$28,350
2016-17	\$31,262	\$25,252	\$28,650
2017-18	n/a	n/a	n/a
2018-19	n/a	n/a	n/a

Student Loan Default Rates & Aggregate Indebtedness

Rationale: Student loan default rates are considered in determining an institution’s eligibility to participate in Title IV federal student loans programs. The target default rate was selected to maintain Bethel’s status with the U.S. Department of Education. The aggregate student loan indebtedness is important to the institution because of the mission of the institution and the potential correlation between the level of debt and default.

Bethel University Cohort Default Rates were below the average National Rate for 2011. 2012 is when Bethel’s online program began to grow, which also increased our default rate. Bethel employs an outside entity to assist them in keeping the default rate low and the 2013 rate dropped 0.4%. After a 1.3% rise in 2014, Bethel’s default rate dropped 1.7% in 2015, and then another .9% in 2016 (draft). Our outside entity is working diligently to continue this downward trend.

Cohort Default Rates Compared to the National Student Loan Default Rates					
Cohort Fiscal Year	Rate Type	Numerator*	Denominator^	Bethel Student Loan Default Rates	National Student Loan Default Rates
2016	3-yr DRAFT	279	2465	11.3%	n/a
2015	3-yr OFFICIAL	355	29.07	12.2%	10.8%
2014	3-yr OFFICIAL	367	2633	13.9	11.5%
2013	3-yr OFFICIAL	298	2356	12.6	11.3%

Resource: National Center for Education Statistics (NCES), IPEDS 2018-2019

Average Net Price For Full-Time Beginning Students

Full-time beginning undergraduate students who were awarded grant or scholarship aid from federal, state or local governments, or the institution.

Academic Year	2015-2016	2016-2017	2017-2018
Average net price	\$14,583	\$14,382	\$15,018

Full-time beginning undergraduate students who were awarded Title IV aid by income.

Average Net Price by Income	2015-2016	2016-2017	2017-2018
\$0 – \$30,000	\$14,635	\$13,070	\$14,932
\$30,001 – \$48,000	\$13,916	\$13,226	\$15,131
\$48,001 – \$75,000	\$15,908	\$14,798	\$17,282
\$75,001 – \$110,000	\$15,970	\$16,745	\$18,134
\$110,001 and more	\$17,388	\$17,287	\$18,233

- Average net price is generated by subtracting the average amount of federal, state/local government, or institutional grant or scholarship aid from the total cost of attendance. Total cost of attendance is the sum of published tuition and required fees, books and supplies, and the weighted average for room and board and other expenses.
- Beginning students are those who are entering postsecondary education for the first time.
- Title IV aid to students includes grant aid, work study aid, and loan aid. These include: Federal Pell Grant, Federal Supplemental Educational Opportunity Grant (FSEOG), Academic Competitiveness Grant (ACG), National Science and Mathematics Access to Retain Talent Grant (National SMART Grant), Teacher Education Assistance for College and Higher Education (TEACH) Grant, Federal Work-Study, Federal Perkins Loan, Subsidized Direct or FFEL Stafford Loan, and Unsubsidized Direct or FFEL Stafford Loan. For those Title IV recipients, net price is reported by income category and includes students who received federal aid even if none of that aid was provided in the form of grants. While Title IV status defines the cohort of student for which the data are reported, the definition of net price remains the same – total cost of attendance minus grant aid.

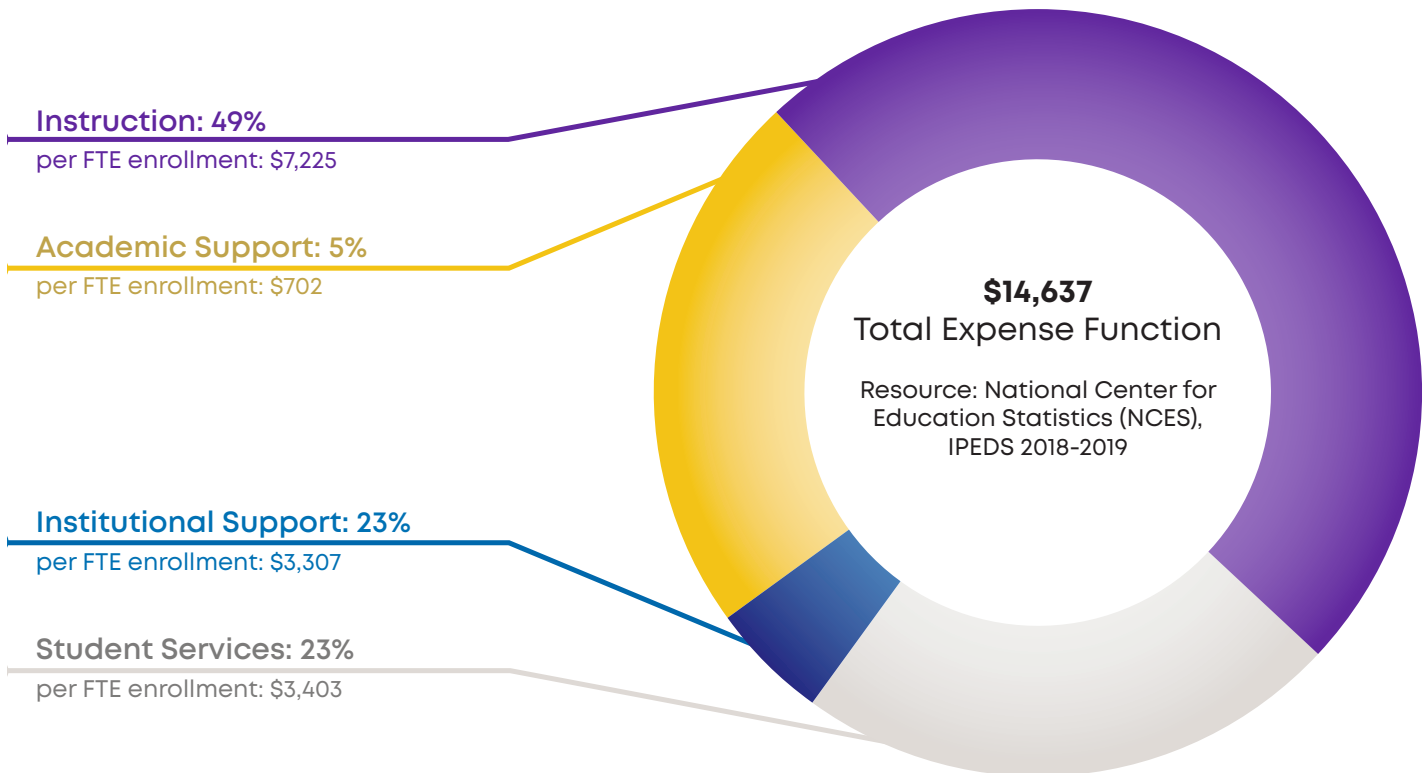
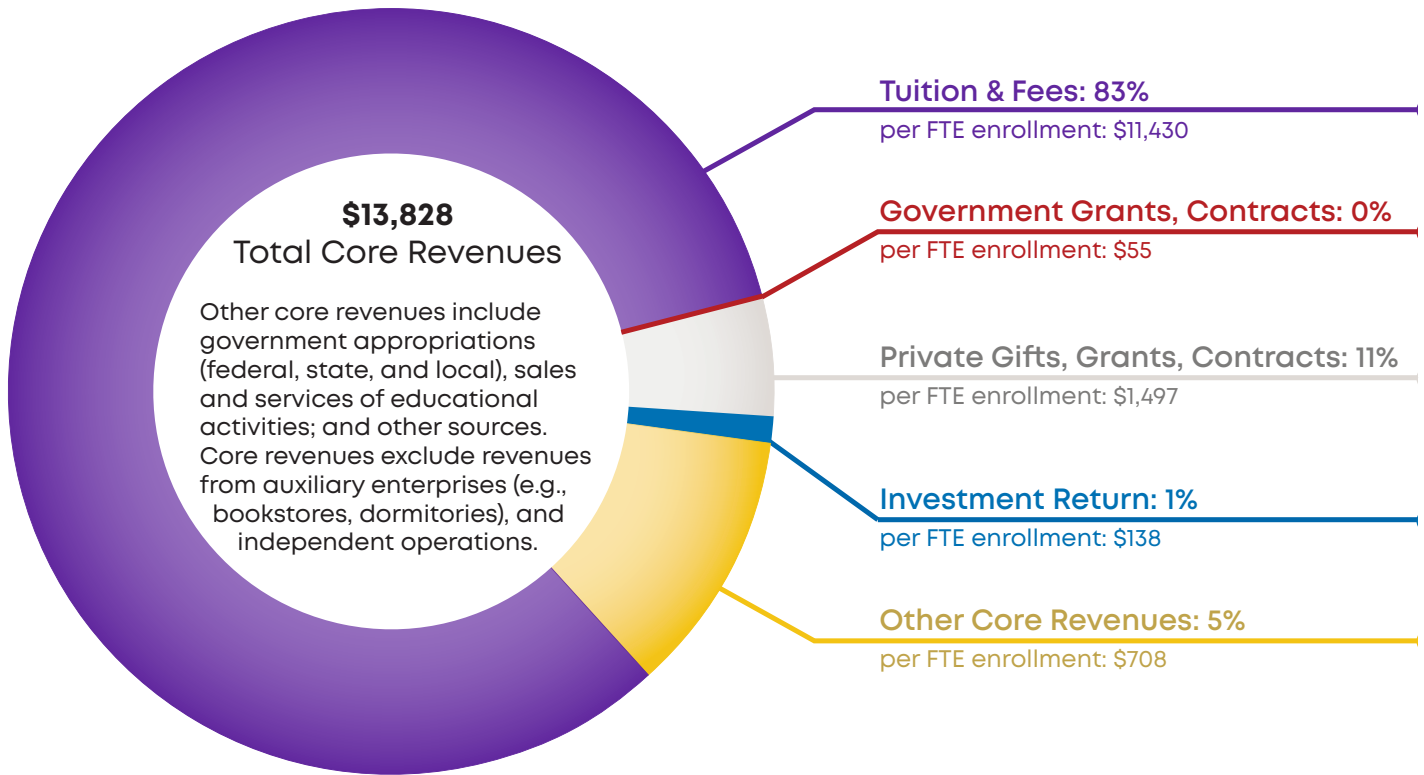
Resource: National Center for Education Statistics (NCES), IPEDS 2018-2019

BU



Revenues & Expenditures

2017-18 Sources of Revenue & Expenditures



Salary Outlays for Full-time Non-instructional Staff: 2018-19

Occupational category	Number of full-time staff	Total annual salary outlays
Library and Student and Academic Affairs and Other Education Services Occupations	25	\$950,015
Management Occupations	45	\$3,459,181
Business and Financial Operations Occupations	23	\$984,498
Computer, Engineering, and Science Occupations	7	\$257,375
Community, Social Service, Legal, Arts, Design, Entertainment, Sports, and Media Occupations	102	\$4,132,067
Healthcare Practitioners and Technical Occupations	6	\$216,984
Service Occupations	32	\$631,849
Sales and Related Occupations	1	\$27,820
Office and Administrative Support Occupations	57	\$1,793,842
Natural Resources, Construction, and Maintenance Occupations	7	\$197,613

Salary Outlays for Full-time Non-instructional Staff: 2018-19

Gender and Academic Rank	Total Staff for Salary Reporting	Annual Average Salaries
Men and Women		
Professors	13	\$66,485
Associate professors	20	\$53,098
Assistant professors	17	\$55,930
Instructors	4	\$41,000
Lecturers	49	\$21,490
No academic rank	0	\$0
Total men	103	\$39,748
Women		
Professors	6	\$60,021
Associate professors	18	\$52,033
Assistant professors	11	\$56,577
Instructors	8	\$40,726
Lecturers	37	\$21,919
No academic rank	0	\$0
Total women	80	\$38,212
Total (men + women)	183	\$39,077

Resource: National Center for Education Statistics (NCES)

Number of Staff by Employment Status & Occupational Category: Fall 2018

Note: Full-time equivalent (FTE) staff is calculated by summing the total number of full-time staff and adding one-third of the total number of part-time staff. Graduate assistants are not included in the above figures. Many of the FTE figures may be included in the DFR.

Occupational Category	Full-time staff	Part-time staff	FTE Staff**
Instructional Staff			
Primarily Instruction	183	125	225
Exclusively Credit	183	125	225
Exclusively Not-for-Credit	0	0	0
Combined Credit/Not-for-Credit	0	0	0
Instruction/Research/Public Service			
Research Staff	0	0	0
Library and Student and Academic Affairs and Other Education Services Occupations	25	9	28
Librarians, Curators, and Archivists SOC 25-4000	5	3	6
Librarians SOC 25-4020	3	1	3
Library Technicians SOC 25-4030	2	2	3
Student and Academic Affairs and Other Education Services Occupations SOC 25-2000 + 25-3000 + 25-9000	20	6	22
Management Occupations SOC 11-0000	45	0	45
Business and Financial Operations Occupations SOC 13-0000	23	0	23
Computer, Engineering, and Science Occupations SOC 15-0000 + 17-0000 + 19-0000	7	1	7
Community, Social Service, Legal, Arts, Design, Entertainment, Sports, and Media Occupations SOC 21-0000 + 23-0000 + 27-0000	102	5	104
Healthcare Practitioners & Technical Occupations SOC 29-0000	6	1	6
Service Occupations SOC 31-0000 + 33-0000 + 35-0000 + 37-0000 + 39-0000	32	28	41
Sales and Related Occupations SOC 41-0000	1	0	1
Office and Administrative Support Occupations SOC 43-0000	57	6	59
Natural Resources, Construction, and Maintenance Occupations soc 45-0000 + 47-0000 + 49-0000	7	0	7
Production, Transportation, and Material Moving Occupations SOC 51-0000 + 53-0000	0	0	0
Total	488	175	546

Resource: National Center for Education Statistics (NCES)

BU



Crime Statistics

Crime Statistics: McKenzie Campus

325 Cherry Avenue, McKenzie, TN 38201

INCIDENT TYPE	ON CAMPUS			RESIDENCE HALLS			OFF CAMPUS			PUBLIC PROPERTY		
	2015	2016	2017	2015	2016	2017	2015	2016	2017	2015	2016	2017
Murder/Non-Negligent Manslaughter	0	0	0	0	0	0	0	0	0	0	0	0
Negligent Manslaughter	0	0	0	0	0	0	0	0	0	0	0	0
Rape	1	3	0	1	3	0	0	0	0	0	0	0
Fondling	1	1	0	0	1	0	0	0	0	0	0	0
Incest	0	0	0	0	0	0	0	0	0	0	0	0
Statutory Rape	0	0	0	0	0	0	0	0	0	0	0	0
Domestic Violence	0	0	0	0	0	0	0	0	0	0	0	0
Dating Violence	1	3	1	1	2	1	0	0	0	0	0	0
Stalking	5	1	3	2	0	0	0	0	0	0	0	0
Robbery	0	0	0	0	0	0	0	0	0	0	0	0
Burglary	13	3	10	12	1	9	0	0	0	0	0	0
Aggravated Assault	0	0	0	0	0	0	0	0	0	0	0	0
Motor Vehicle Theft	0	0	0	0	0	0	0	0	0	0	0	0
Arson	0	0	0	0	0	0	0	0	0	0	0	0
Total:	21	10	14	16	7	10	0	0	0	0	0	0

ARRESTS AND REFERRALS FOR DISCIPLINARY ACTION												
Arrest for Alcohol	0	0	1	0	0	0	0	0	0	0	0	0
Discipline for Alcohol	12	8	10	10	8	9	0	1	0	0	0	0
Arrest for Drugs	4	0	1	3	0	1	0	0	0	1	0	0
Discipline for Drugs	10	3	1	10	3	1	0	0	0	0	0	0
Arrest for Weapons	1	0	0	0	0	0	0	0	0	0	0	0
Discipline for Weapons	1	2	1	1	0	1	0	0	0	0	0	0
Total:	28	13	14	24	11	12	0	1	0	1	0	0

There were no reported Hate Crimes or unfounded crimes for this campus.

Source: Bethel University Annual Security and Fire Safety Report

Crime Statistics: Paris Campus

302 B Tyson Avenue, Paris, TN 38242

INCIDENT TYPE	ON CAMPUS			RESIDENCE HALLS			OFF CAMPUS			PUBLIC PROPERTY		
	2015	2016	2017	2015	2016	2017	2015	2016	2017	2015	2016	2017
Murder/Non-Negligent Manslaughter	0	0	0	0	0	0	0	0	0	0	0	0
Negligent Manslaughter	0	0	0	0	0	0	0	0	0	0	0	0
Rape	0	0	0	0	0	0	0	0	0	0	0	0
Fondling	0	0	0	0	0	0	0	0	0	0	0	0
Incest	0	0	0	0	0	0	0	0	0	0	0	0
Statutory Rape	0	0	0	0	0	0	0	0	0	0	0	0
Domestic Violence	0	0	0	0	0	0	0	0	0	0	0	0
Dating Violence	0	0	0	0	0	0	0	0	0	0	0	0
Stalking	0	0	0	0	0	0	0	0	0	0	0	0
Robbery	0	0	0	0	0	0	0	0	0	0	0	0
Burglary	0	0	0	0	0	0	0	0	0	0	0	0
Aggravated Assault	0	0	0	0	0	0	0	0	0	0	0	0
Motor Vehicle Theft	0	0	0	0	0	0	0	0	0	0	0	0
Arson	0	0	0	0	0	0	0	0	0	0	0	0
Total:	0	0	0	0	0	0	0	0	0	0	0	0

ARRESTS AND REFERRALS FOR DISCIPLINARY ACTION												
Arrest for Alcohol	0	0	0	0	0	0	0	0	0	0	0	0
Discipline for Alcohol	0	0	0	0	0	0	0	0	0	0	0	0
Arrest for Drugs	0	0	0	0	0	0	0	0	0	3	1	0
Discipline for Drugs	0	0	0	0	0	0	0	0	0	0	0	0
Arrest for Weapons	0	0	0	0	0	0	0	0	0	0	0	0
Discipline for Weapons	0	0	0	0	0	0	0	0	0	0	0	0
Total:	0	0	0	0	0	0	0	0	0	3	1	0

There were no reported Hate Crimes or unfounded crimes for this campus.

Source: Bethel University Annual Security and Fire Safety Report

Crime Statistics: Chattanooga Campus

200 W. Martin Luther King Blvd. Suite 1032 Chattanooga, TN 37402

INCIDENT TYPE	ON CAMPUS			RESIDENCE HALLS			OFF CAMPUS			PUBLIC PROPERTY		
	2015	2016	2017	2015	2016	2017	2015	2016	2017	2015	2016	2017
Murder/Non-Negligent Manslaughter	0	0	0	0	0	0	0	0	0	0	0	0
Negligent Manslaughter	0	0	0	0	0	0	0	0	0	0	0	0
Rape	0	0	0	0	0	0	0	0	0	0	0	0
Fondling	0	0	0	0	0	0	0	0	0	0	0	0
Incest	0	0	0	0	0	0	0	0	0	0	0	0
Statutory Rape	0	0	0	0	0	0	0	0	0	0	0	0
Domestic Violence	0	0	0	0	0	0	0	0	0	0	0	0
Dating Violence	0	0	0	0	0	0	0	0	0	0	0	0
Stalking	0	0	0	0	0	0	0	0	0	0	0	0
Robbery	0	0	0	0	0	0	0	0	0	0	0	0
Burglary	0	0	0	0	0	0	0	0	0	0	0	0
Aggravated Assault	0	0	0	0	0	0	0	0	0	0	0	0
Motor Vehicle Theft	0	0	0	0	0	0	0	0	0	0	0	0
Arson	0	0	0	0	0	0	0	0	0	0	0	0
Total:	0	0	0	0	0	0	0	0	0	0	0	0

ARRESTS AND REFERRALS FOR DISCIPLINARY ACTION												
Arrest for Alcohol	0	0	0	0	0	0	0	0	0	0	0	0
Discipline for Alcohol	0	0	0	0	0	0	0	0	0	0	0	0
Arrest for Drugs	0	0	0	0	0	0	0	0	0	0	01	0
Discipline for Drugs	0	0	0	0	0	0	0	0	0	0	0	0
Arrest for Weapons	0	0	0	0	0	0	0	0	0	0	0	0
Discipline for Weapons	0	0	0	0	0	0	0	0	0	0	0	0
Total:	0	0	0	0	0	0	0	0	0	0	0	0

There were no reported Hate Crimes or unfounded crimes for this campus.

Source: Bethel University Annual Security and Fire Safety Report

Crime Statistics: Clarksville Campus

2200A Wilma Rudolph Blvd. Clarksville, TN 37040

INCIDENT TYPE	ON CAMPUS			RESIDENCE HALLS			OFF CAMPUS			PUBLIC PROPERTY		
	2015	2016	2017	2015	2016	2017	2015	2016	2017	2015	2016	2017
Murder/Non-Negligent Manslaughter	0	0	0	0	0	0	0	0	0	0	0	0
Negligent Manslaughter	0	0	0	0	0	0	0	0	0	0	0	0
Rape	0	0	0	0	0	0	0	0	0	0	0	0
Fondling	0	0	0	0	0	0	0	0	0	0	0	0
Incest	0	0	0	0	0	0	0	0	0	0	0	0
Statutory Rape	0	0	0	0	0	0	0	0	0	0	0	0
Domestic Violence	0	0	0	0	0	0	0	0	0	0	0	0
Dating Violence	0	0	0	0	0	0	0	0	0	0	0	0
Stalking	0	0	0	0	0	0	0	0	0	0	0	0
Robbery	0	0	0	0	0	0	0	0	0	0	0	0
Burglary	0	0	0	0	0	0	0	0	0	0	0	0
Aggravated Assault	0	0	0	0	0	0	0	0	0	0	0	0
Motor Vehicle Theft	0	0	0	0	0	0	0	0	0	0	0	0
Arson	0	0	0	0	0	0	0	0	0	0	0	0
Total:	0	0	0	0	0	0	0	0	0	0	0	0

ARRESTS AND REFERRALS FOR DISCIPLINARY ACTION												
Arrest for Alcohol	0	0	0	0	0	0	0	0	0	0	0	0
Discipline for Alcohol	0	0	0	0	0	0	0	0	0	0	0	0
Arrest for Drugs	0	0	0	0	0	0	0	0	0	0	0	0
Discipline for Drugs	0	0	0	0	0	0	0	0	0	0	0	0
Arrest for Weapons	0	0	0	0	0	0	0	0	0	0	0	0
Discipline for Weapons	0	0	0	0	0	0	0	0	0	0	0	0
Total:	0	0	0	0	0	0	0	0	0	0	0	0

There were no reported Hate Crimes or unfounded crimes for this campus.

Source: Bethel University Annual Security and Fire Safety Report

Crime Statistics: Jackson Campus

33 / 51 / 59 Murray Guard Drive Jackson, TN 38305

INCIDENT TYPE	ON CAMPUS			RESIDENCE HALLS			OFF CAMPUS			PUBLIC PROPERTY		
	2015	2016	2017	2015	2016	2017	2015	2016	2017	2015	2016	2017
Murder/Non-Negligent Manslaughter	0	0	0	0	0	0	0	0	0	0	0	0
Negligent Manslaughter	0	0	0	0	0	0	0	0	0	0	0	0
Rape	0	0	0	0	0	0	0	0	0	0	0	0
Fondling	0	0	0	0	0	0	0	0	0	0	0	0
Incest	0	0	0	0	0	0	0	0	0	0	0	0
Statutory Rape	0	0	0	0	0	0	0	0	0	0	0	0
Domestic Violence	0	0	0	0	0	0	0	0	0	0	0	0
Dating Violence	0	0	0	0	0	0	0	0	0	0	0	0
Stalking	0	0	0	0	0	0	0	0	0	0	0	0
Robbery	0	0	0	0	0	0	0	0	0	0	0	0
Burglary	0	0	0	0	0	0	0	0	0	0	0	0
Aggravated Assault	0	0	0	0	0	0	0	0	0	0	0	0
Motor Vehicle Theft	1	0	0	0	0	0	0	0	0	0	0	0
Arson	0	0	0	0	0	0	0	0	0	0	0	0
Total:	1	0	0	0	0	0	0	0	0	0	0	0

ARRESTS AND REFERRALS FOR DISCIPLINARY ACTION												
Arrest for Alcohol	0	0	0	0	0	0	0	0	0	0	0	0
Discipline for Alcohol	0	0	0	0	0	0	0	0	0	0	0	0
Arrest for Drugs	0	0	0	0	0	0	0	0	0	0	01	0
Discipline for Drugs	0	0	0	0	0	0	0	0	0	0	0	0
Arrest for Weapons	0	0	0	0	0	0	0	0	0	0	0	0
Discipline for Weapons	0	0	0	0	0	0	0	0	0	0	0	0
Total:	0	0	0	0	0	0	0	0	0	0	0	0

There were no reported Hate Crimes or unfounded crimes for this campus.

Source: Bethel University Annual Security and Fire Safety Report

Crime Statistics: Memphis Campus

5885 Ridgeway Center Parkway Suite 100 Memphis, TN 38120

INCIDENT TYPE	ON CAMPUS			RESIDENCE HALLS			OFF CAMPUS			PUBLIC PROPERTY		
	2015	2016	2017	2015	2016	2017	2015	2016	2017	2015	2016	2017
Murder/Non-Negligent Manslaughter	0	0	0	0	0	0	0	0	0	0	0	0
Negligent Manslaughter	0	0	0	0	0	0	0	0	0	0	0	0
Rape	0	0	0	0	0	0	0	0	0	0	0	0
Fondling	0	0	0	0	0	0	0	0	0	0	0	0
Incest	0	0	0	0	0	0	0	0	0	0	0	0
Statutory Rape	0	0	0	0	0	0	0	0	0	0	0	0
Domestic Violence	0	0	0	0	0	0	0	0	0	0	0	0
Dating Violence	0	0	0	0	0	0	0	0	0	0	0	0
Stalking	0	0	0	0	0	0	0	0	0	0	0	0
Robbery	0	0	0	0	0	0	0	0	0	0	0	0
Burglary	1	0	0	0	0	0	0	0	0	0	0	0
Aggravated Assault	0	0	0	0	0	0	0	0	0	0	0	0
Motor Vehicle Theft	0	0	0	0	0	0	0	0	0	0	0	0
Arson	0	0	0	0	0	0	0	0	0	0	0	0
Total:	1	0	0	0	0	0	0	0	0	0	0	0

ARRESTS AND REFERRALS FOR DISCIPLINARY ACTION												
Arrest for Alcohol	0	0	0	0	0	0	0	0	0	0	0	0
Discipline for Alcohol	0	0	0	0	0	0	0	0	0	0	0	0
Arrest for Drugs	0	0	0	0	0	0	0	0	0	0	01	0
Discipline for Drugs	0	0	0	0	0	0	0	0	0	0	0	0
Arrest for Weapons	0	0	0	0	0	0	0	0	0	0	0	0
Discipline for Weapons	0	0	0	0	0	0	0	0	0	0	0	0
Total:	0	0	0	0	0	0	0	0	0	0	0	0

There were no reported Hate Crimes or unfounded crimes for this campus.

Source: Bethel University Annual Security and Fire Safety Report

Crime Statistics: Nashville Campus

1801 West End Avenue Suite 200 Nashville, TN 37203

INCIDENT TYPE	ON CAMPUS			RESIDENCE HALLS			OFF CAMPUS			PUBLIC PROPERTY		
	2015	2016	2017	2015	2016	2017	2015	2016	2017	2015	2016	2017
Murder/Non-Negligent Manslaughter	0	0	0	0	0	0	0	0	0	0	0	0
Negligent Manslaughter	0	0	0	0	0	0	0	0	0	0	0	0
Rape	0	0	0	0	0	0	0	0	0	0	0	0
Fondling	0	0	0	0	0	0	0	0	0	0	0	0
Incest	0	0	0	0	0	0	0	0	0	0	0	0
Statutory Rape	0	0	0	0	0	0	0	0	0	0	0	0
Domestic Violence	0	0	0	0	0	0	0	0	0	0	0	0
Dating Violence	0	0	0	0	0	0	0	0	0	0	0	0
Stalking	0	0	0	0	0	0	0	0	0	0	0	0
Robbery	0	0	0	0	0	0	0	0	0	0	0	0
Burglary	0	0	0	0	0	0	0	0	0	0	0	0
Aggravated Assault	0	0	0	0	0	0	0	0	0	0	0	0
Motor Vehicle Theft	0	0	0	0	0	0	0	0	0	0	0	0
Arson	0	0	0	0	0	0	0	0	0	0	0	0
Total:	0	0	0	0	0	0	0	0	0	0	0	0

ARRESTS AND REFERRALS FOR DISCIPLINARY ACTION												
Arrest for Alcohol	0	0	0	0	0	0	0	0	0	0	0	0
Discipline for Alcohol	0	0	0	0	0	0	0	0	0	0	0	0
Arrest for Drugs	0	0	0	0	0	0	0	0	0	0	01	0
Discipline for Drugs	0	0	0	0	0	0	0	0	0	0	0	0
Arrest for Weapons	0	0	0	0	0	0	0	0	0	0	0	0
Discipline for Weapons	0	0	0	0	0	0	0	0	0	0	0	0
Total:	0	0	0	0	0	0	0	0	0	0	0	0

There were no reported Hate Crimes or unfounded crimes for this campus.

Source: Bethel University Annual Security and Fire Safety Report

BU



Graduation

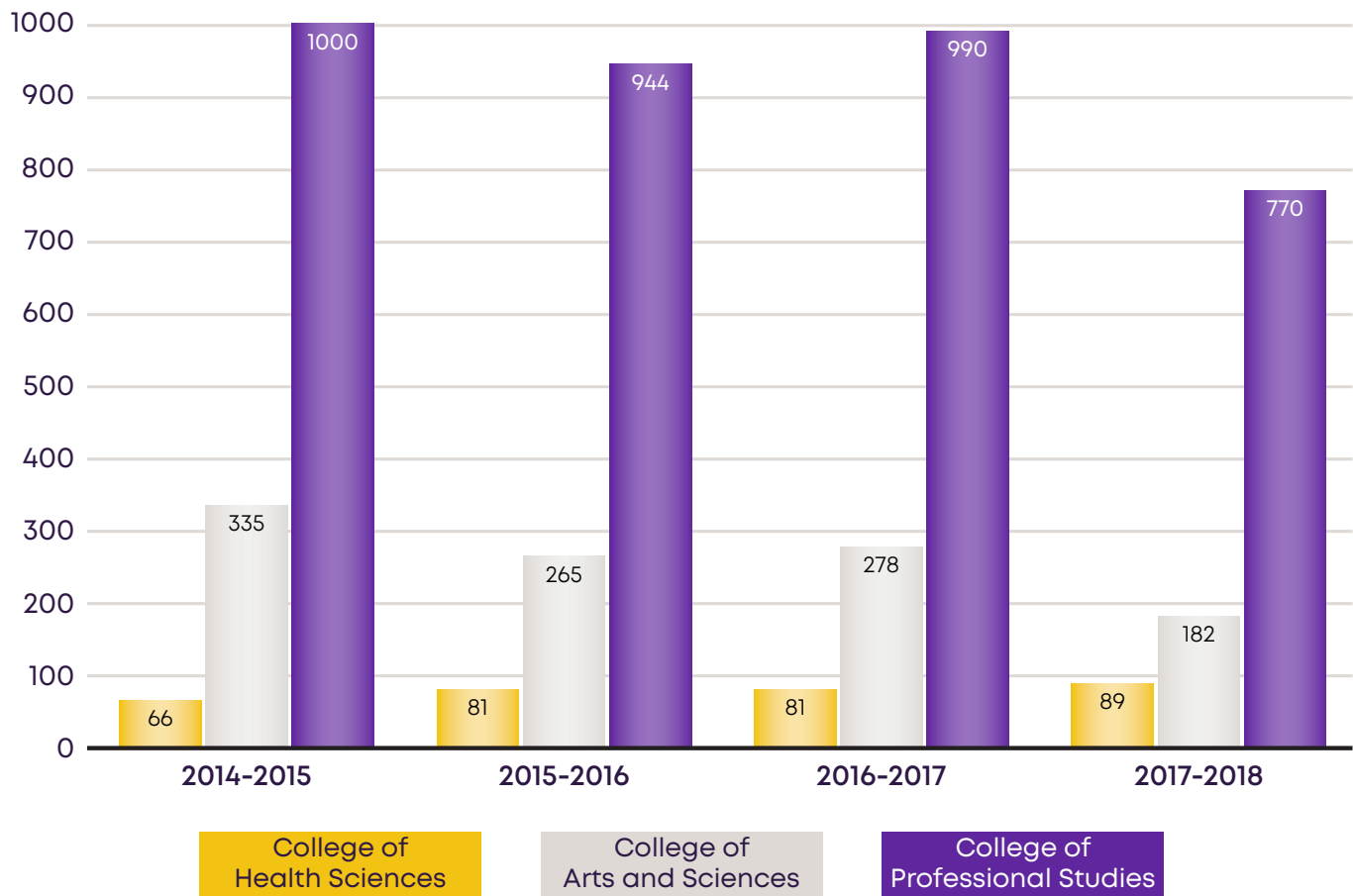
Graduates by College

As demonstrated on the graphs below, the number of graduates each year in our non-traditional programs in the College of Professional Studies far exceed the number of students in our traditional programs who make up the majority of first-time freshman.

In 2015 the College of Criminal Justice was combined with the College of Professional Studies. In 2017 the School of Education was combined with the College of Arts and Sciences. These totals have been combined to accurately compare data with the current year.

The 2018-2019 year has not been completed as of the date of this publication. It will be reported in the 2018-2019 Fact Book.

4-Year Comparison of Graduates by College



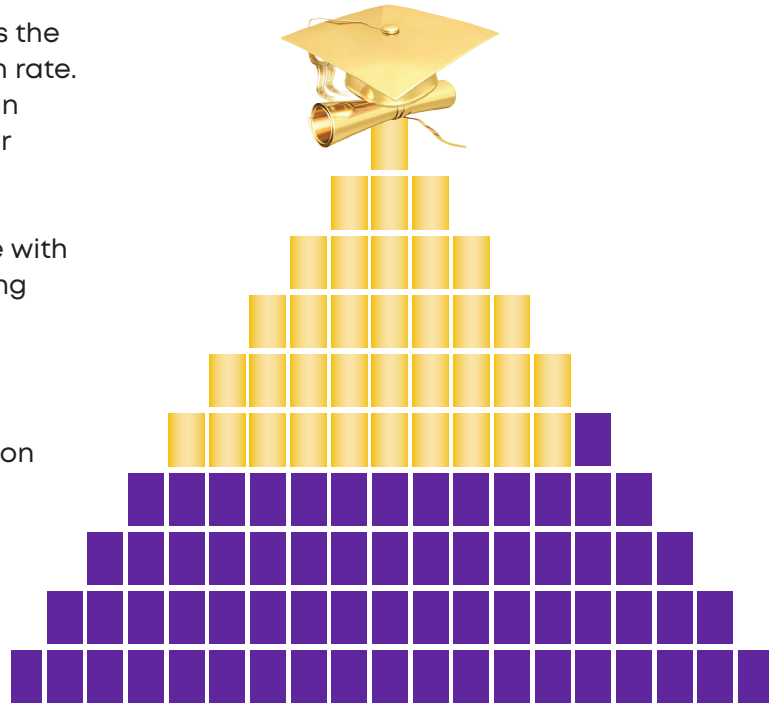
Source: Office of Institutional Research and Effectiveness

Graduation Rates

The overall graduation rate is also known as the “Student Right to Know” or IPEDS graduation rate. It tracks the progress of students who began their studies as full-time, first-time degree or certificate seeking students to see if they complete a degree or other award such as a certificate with 150% (6-years) of “normal time” for completing the program in which they are enrolled.

Students who have transferred to Bethel University after attending another secondary education program are not counted in these totals.

Total for students who began their studies in Fall 2012: **35%**



4-Year Average Graduation and Transfer Out Rates					
Men	2009	2010	2011	2012	4-year Total
Adjusted Cohort	200	244	262	347	1,053
Total Completers Within 150%	49	76	52	81	258
Total Transfer-Out Students	N/A	111	N/A	115	226
Women	2009	2010	2011	2012	4-year Total
Adjusted Cohort	151	133	180	334	798
Total Completers Within 150%	57	57	68	115	297
Total Transfer-Out Students	0	55	0	74	129
Total (men and women)	2009	2010	2011	2012	4-year Total
Adjusted Cohort	351	377	442	681	1,851
Total Completers Within 150%	106	133	120	196	555
Total Transfer-Out Students	0	166	0	189	355

Source: Office of Institutional Research and Effectiveness

BethelUniversity

Fact Book: 2018-19 Academic Year
Completed July, 2019